

RETAIL SUBLEASE AVAILABLE

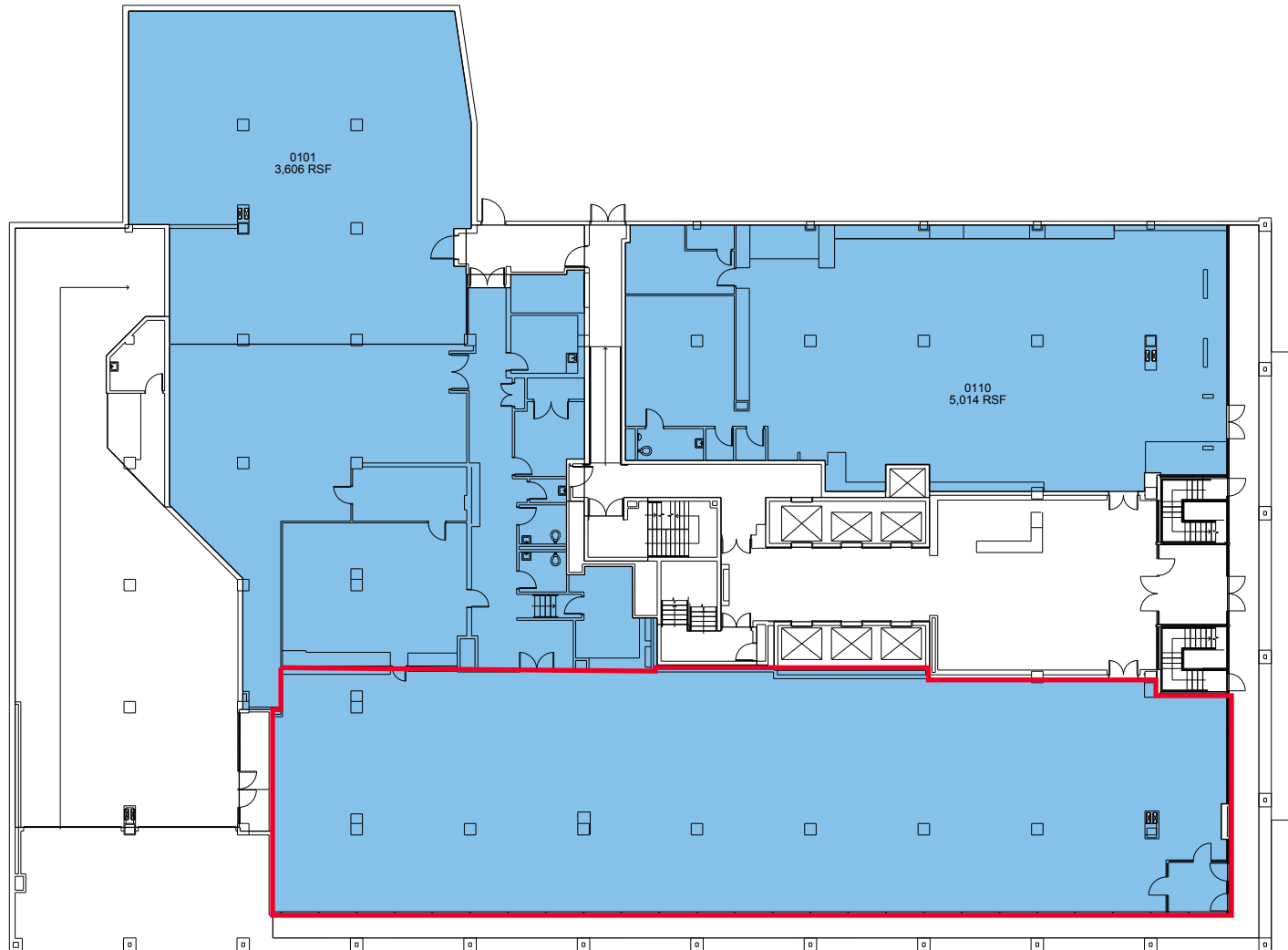
2000 M STREET NW WASHINGTON, DC 20036

11,615 SF | TERM THROUGH 01/31/2029 | \$20.00/NNN | AVAILABLE IMMEDIATELY



2000 M STREET NW

11,615 SF | TERM THROUGH 01/31/2029 | \$20.00/NNN | AVAILABLE IMMEDIATELY



FOR MORE INFORMATION, CONTACT:

Ned Goodwin

202-266-1169 | ned.goodwin@cushwake.com

Gwen Dominguez

301-634-2383 | gwen.fraker@cushwake.com

Scarlett Cunningham

202-495-7052 | scarlett.cunningham@cushwake.com