

FOR SALE



FREE-STANDING BUILDING WITH DRIVE-THRU
1748 LILIHA ST | HONOLULU, HI



THE HEART OF HONOLULU

Looking for a fee simple retail building in town? Don't miss this opportunity to acquire a fee simple property in the heart of Honolulu! The 3,146 SF building is a former pharmacy located on the northwest corner of Liliha and Kuakini Streets. The site provides exceptional visibility and is easily accessible to or from Vineyard Boulevard, Pali Highway and H-1 (east and west-bound). Built in 2009, the building has an existing drive-thru pickup lane and can be easily re-purposed.

INVESTMENT HIGHLIGHTS

EXCELLENT VISIBILITY

Strong exposure on the corner of Liliha and Kuakini Streets

CONVENIENT LOCATION

Minutes from Downtown Honolulu, free-ways, and major traffic corridors

DESIRABLE PROPERTY

Efficient building size with ample parking for customers and staff

OWNER-USER OPPORTUNITY

Build equity for your business and eliminate lease rent expenses

B-2 ZONING

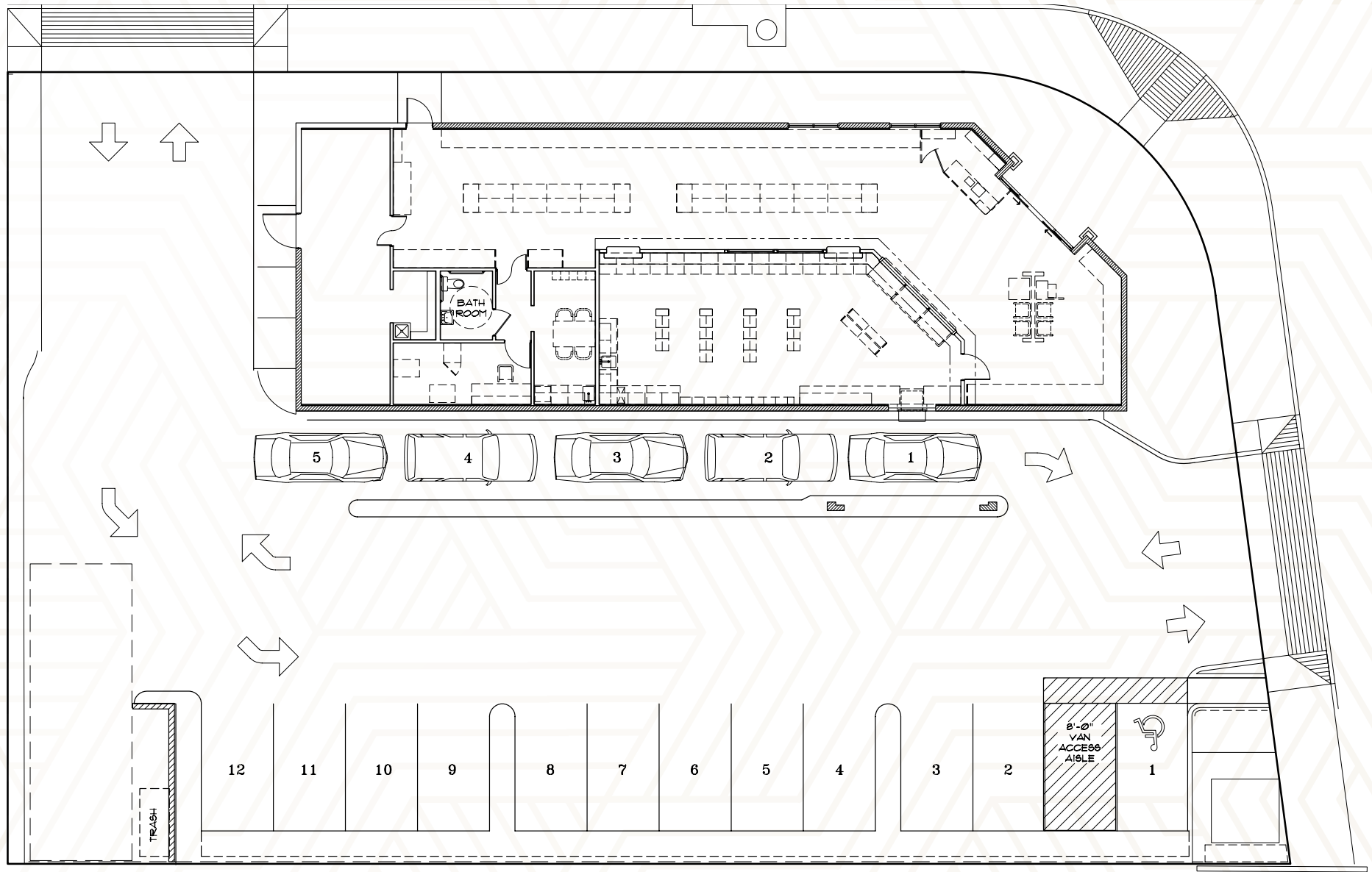
Acceptable uses include business services, convenience stores, financial institutions, medical clinics, laboratories, real estate offices, retail and eating establishments.

PROPERTY OVERVIEW

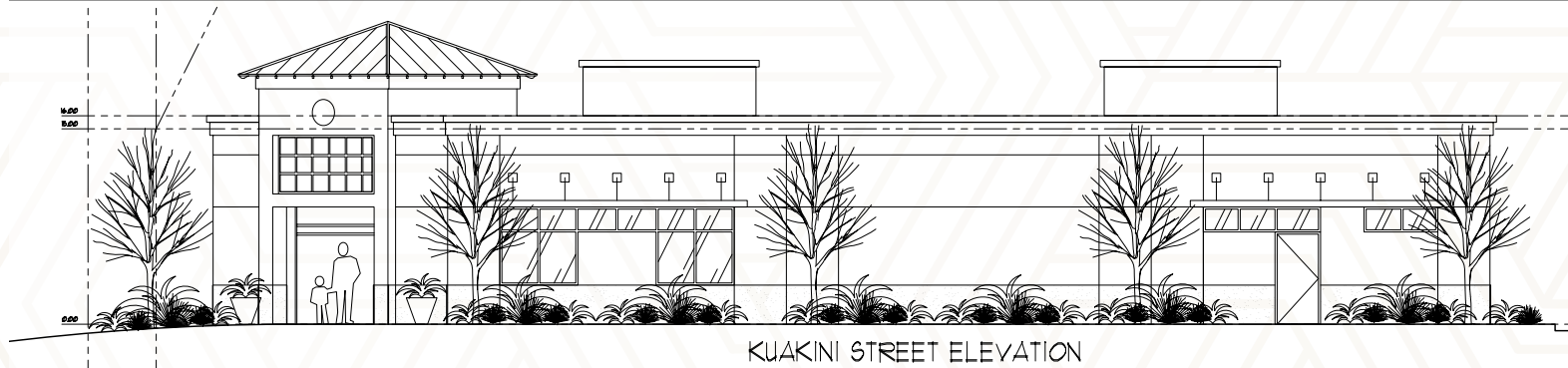
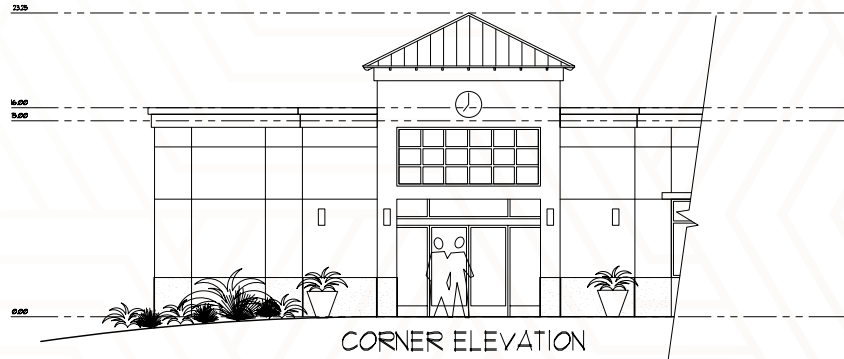
Area	Liliha
TMK	(1) 7-35-26 & 35
Zoning	B-2
Building SF	3,146 SF
Land Area	14,273 SF
Asking Price	\$3.85 Million
Tenure	Fee Simple



SITE PLAN



SITE PLAN



LILIHA AT A GLANCE

	1 Mile	3 Miles	5 Miles
Population:	53,087	203,507	338,952
Households:	20,175	80,600	132,657
Avg HH Income:	\$97,956	\$105,984	\$108,394
Median HH Income:	\$64,555	\$71,441	\$75,725
Median Age:	46.8	44.6	42.8
Avg HH Size:	2.55	2.46	2.48
College Degree or Higher:	20.7%	23.8%	25.2%
Total Housing Units:	21,906	91,402	151,803



**BIKE
SCORE**

58

BIKEABLE



**WALK
SCORE**

80

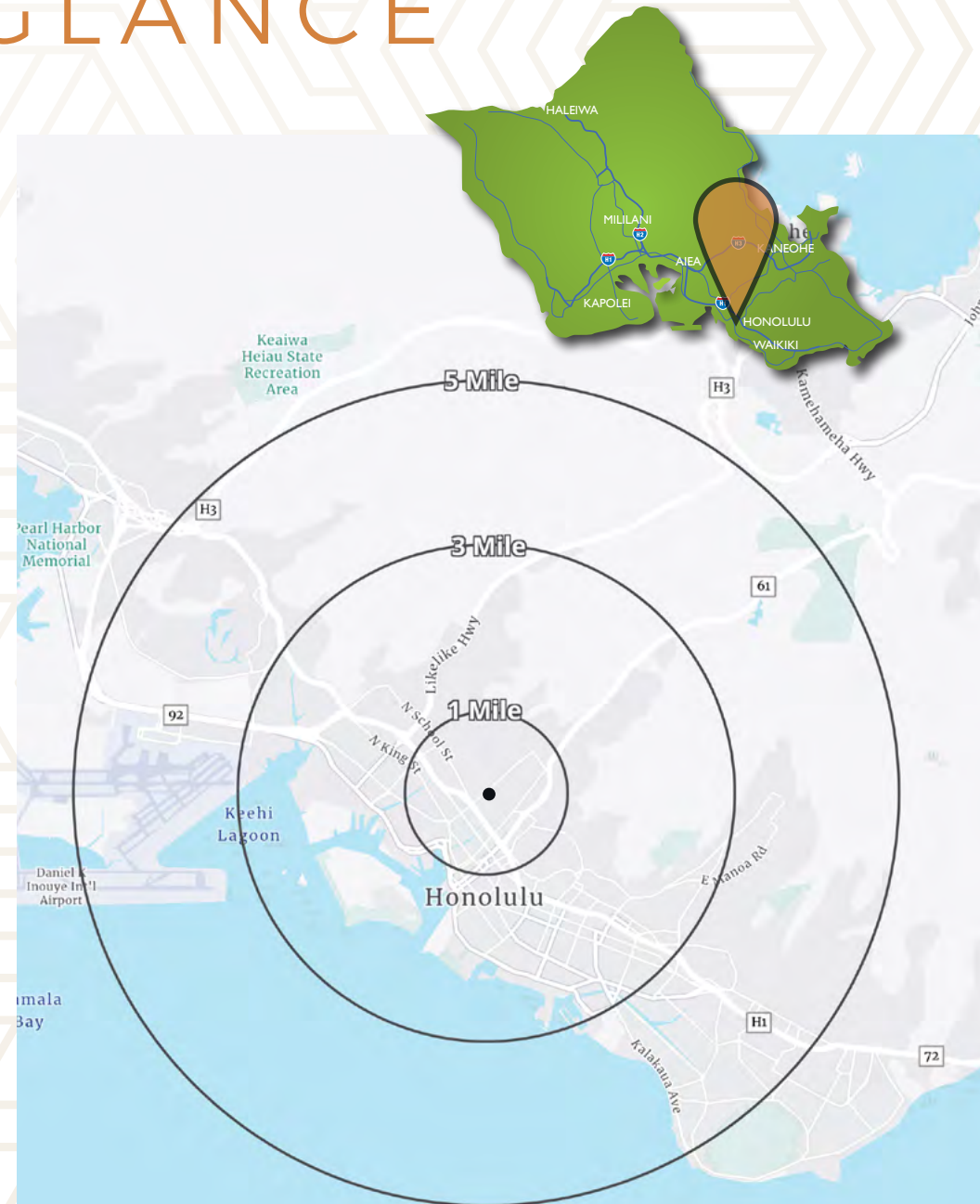
VERY
WALKABLE



**BUS
SCORE**

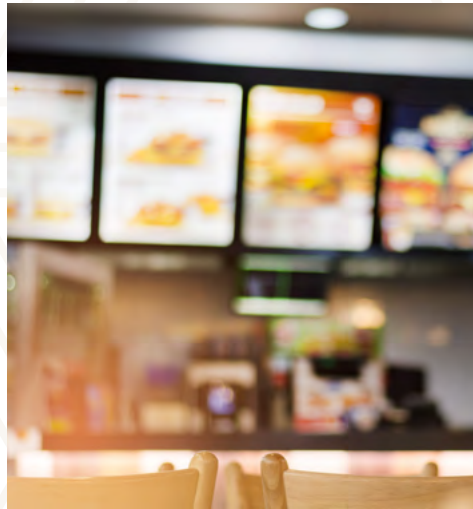
71

EXCELLENT
TRANSIT



YOUR NEIGHBORHOOD





Jon-Eric Greene (B)*
 Senior Vice President
 Retail Services Division
 Lic# RS-17777
 808 330 2900
jon-eric.greene@colliers.com

Kelli Yanagawa Wilinski (S)
 Vice President
 Retail Services Division
 Lic# RS-62770
 808 371 4856
kelli.wilinski@colliers.com

*Greene Property Group, LLC. Exclusively contracted to Colliers International HI, LLC. This document/email has been prepared by Colliers for advertising and general information only. Colliers makes no guarantees, representations or warranties of any kind, expressed or implied, regarding the information including, but not limited to, warranties of content, accuracy and reliability. Any interested party should undertake their own inquiries as to the accuracy of the information. Colliers excludes unequivocally all inferred or implied terms, conditions and warranties arising out of this document and excludes all liability for loss and damages arising there from. This publication is the copyrighted property of Colliers and /or its licensor(s). © 2022. All rights reserved. This communication is not intended to cause or induce breach of an existing listing agreement.