

UPPER EAST SIDE  
NEW YORK CITY

**1241**  
LEXINGTON AVENUE

NORTHEAST CORNER  
OF EAST 84TH STREET

WRAPAROUND FRONTAGE APPROX. 130 FEET

**CVS/pharmacy**

SUBLEASE OPPORTUNITY



 CUSHMAN & WAKEFIELD

UPPER EAST SIDE  
NEW YORK CITY

# 1241

LEXINGTON AVENUE

## POSSESSION

### Immediate

CVS Sublease Through  
5/31/2029

## PRIME CORNER ON EAST 86TH STREET

Steps Away from the  
Prominent 86th Street  
Shopping Corridor

## DENSE RESIDENTIAL NEIGHBORHOOD

82,654 Residents and  
16,000 Families Within a  
10 Minute Walking Distance

## ONE BLOCK FROM 86TH STREET SUBWAY STATION

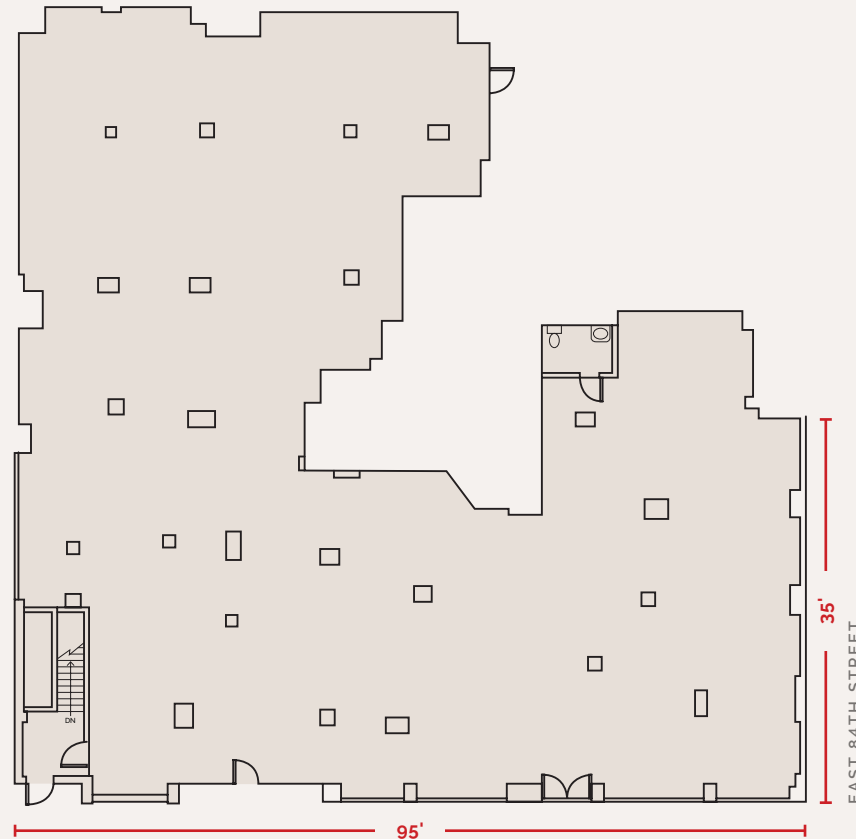
4, 5, 6 Subway Lines.  
13,537,308 Annual Riders

## NEIGHBORS

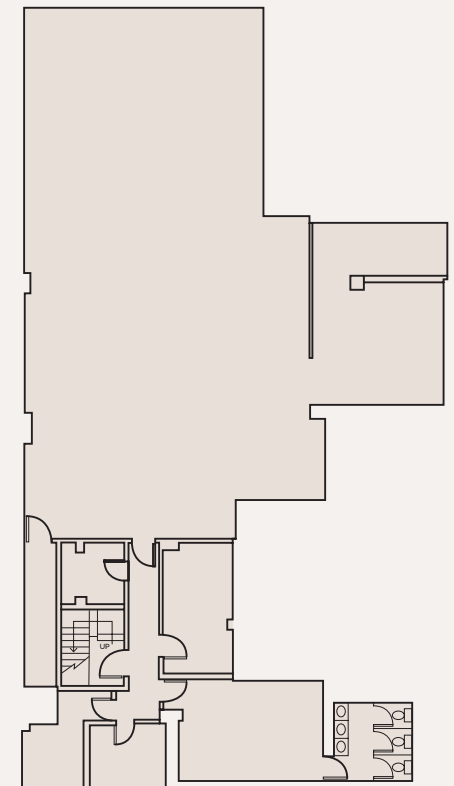
Best Buy • H&M • Old Navy  
Target • Ulta • D'Agostino  
Duane Read • Core Power  
Starbucks • Variety Coffee  
Metropolitan Commercial  
Bank • Bank of America  
Chase Bank

GROUND FLOOR  
7,750 SF

CEILING HEIGHTS  
10'



BASEMENT - STORAGE  
3,668 SF



LEXINGTON AVENUE



E. 88TH STREET



DIG.

BARNES & NOBLE

E. 87TH STREET

OLE & STEEN LAGKAGEHUSET

PAPER SOURCE



STAPLES

AMC THEATRES



OLD NAVY

VICTORIA'S SECRET



lululemon athletica

BEST BUY

Foot Locker

CHASE

STEVE MADDEN

verizon

T-Mobile Development

THIRD AVENUE

E. 86TH STREET

BANK OF AMERICA

SEPHORA



Citizens

ULTA BEAUTY

AT&T



ATHLETA EQUINOX



Metropolitan Commercial Bank



E. 85TH STREET

fresh&co just made, just for you.



UPPER EAST SIDE NEW YORK CITY

TD Bank



corepower YOGA

1241 LEXINGTON AVENUE

swētgreen



TACO BELL

SUBWAY

DUNKIN'



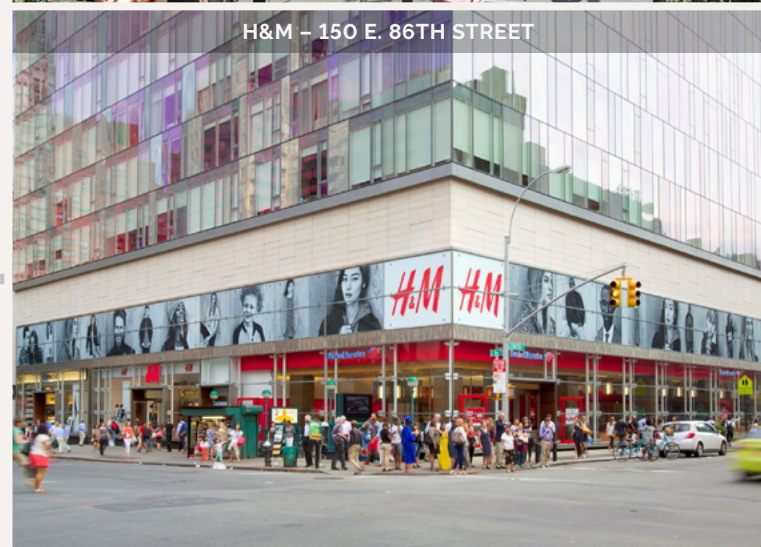
drybar

E. 84TH STREET

SHAKE SHACK - 154 E. 86TH STREET



H&M - 150 E. 86TH STREET



LULULEMON - 1529 THIRD AVENUE



UPPER EAST SIDE  
NEW YORK CITY

**1241**  
LEXINGTON AVENUE

NORTHEAST CORNER  
OF EAST 84TH STREET

For more information, please contact

**JOANNE PODELL**

212 841 5972

[joanne.podell@cushwake.com](mailto:joanne.podell@cushwake.com)

**MICHAEL SHALOM**

212 698 2543

[michael.shalom@cushwake.com](mailto:michael.shalom@cushwake.com)

**TEDDY DOLAN**

212 698 5658

[teddy.dolan@cushwake.com](mailto:teddy.dolan@cushwake.com)

**DEE LEWIS**

212 659 6484

[dee.lewis@cushwake.com](mailto:dee.lewis@cushwake.com)

