



for lease

cre.

## command the corner | prime former cvs for lease today!

1535 john c. calhoun drive, orangeburg, sc 29115

- Located on the hard corner of John C. Calhoun Drive at Stonewall Jackson Street
- Former CVS ~10,725 SF with drive thru
- Access on John C. Calhoun and Stonewall Jackson
- Prominent Pylon Sign with Digital Reader Board
- Outparcel to a WalMart Neighborhood Market
- Plug In. Fire Up. Take Over.

### nearby retailers



### traffic counts

US Route 301 | 27,500 VPD  
Stonewall Jackson Street | 6,500 VPD  
Broughton St | 10,100 VPD

Source: SCDOT 2025

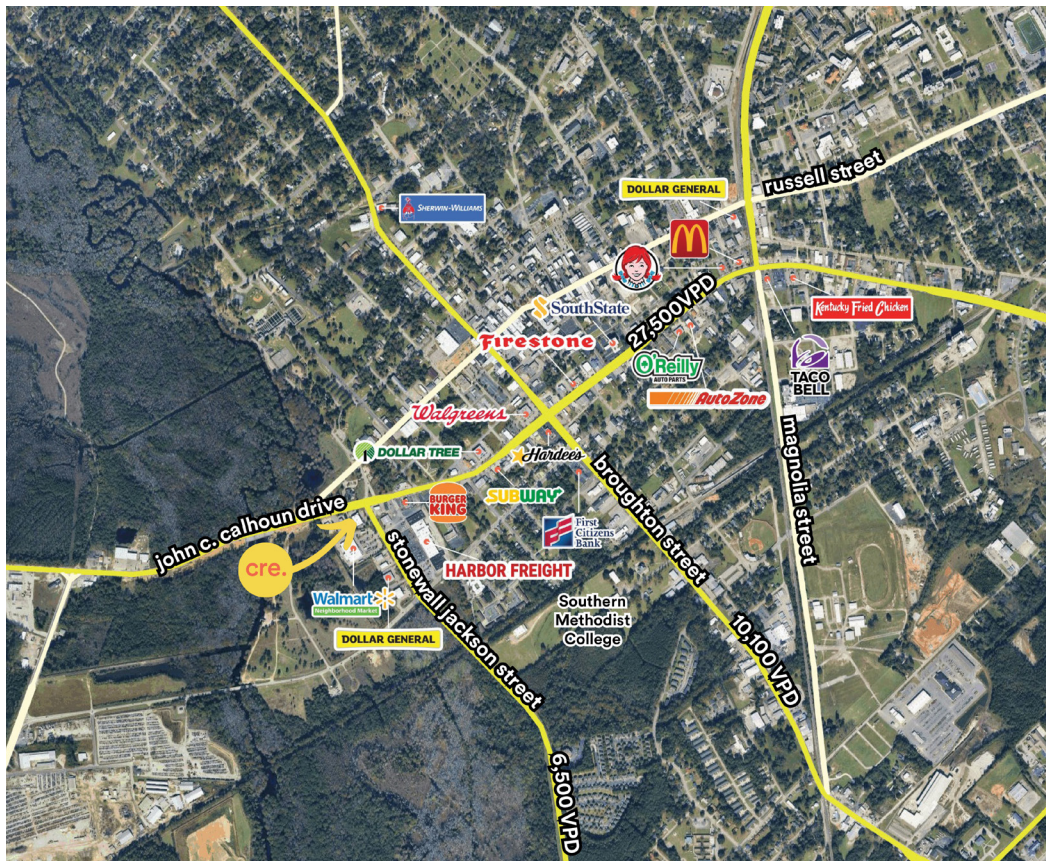
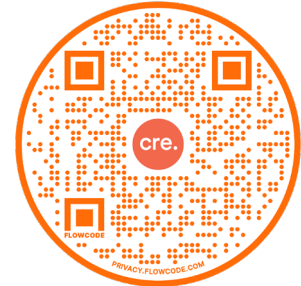
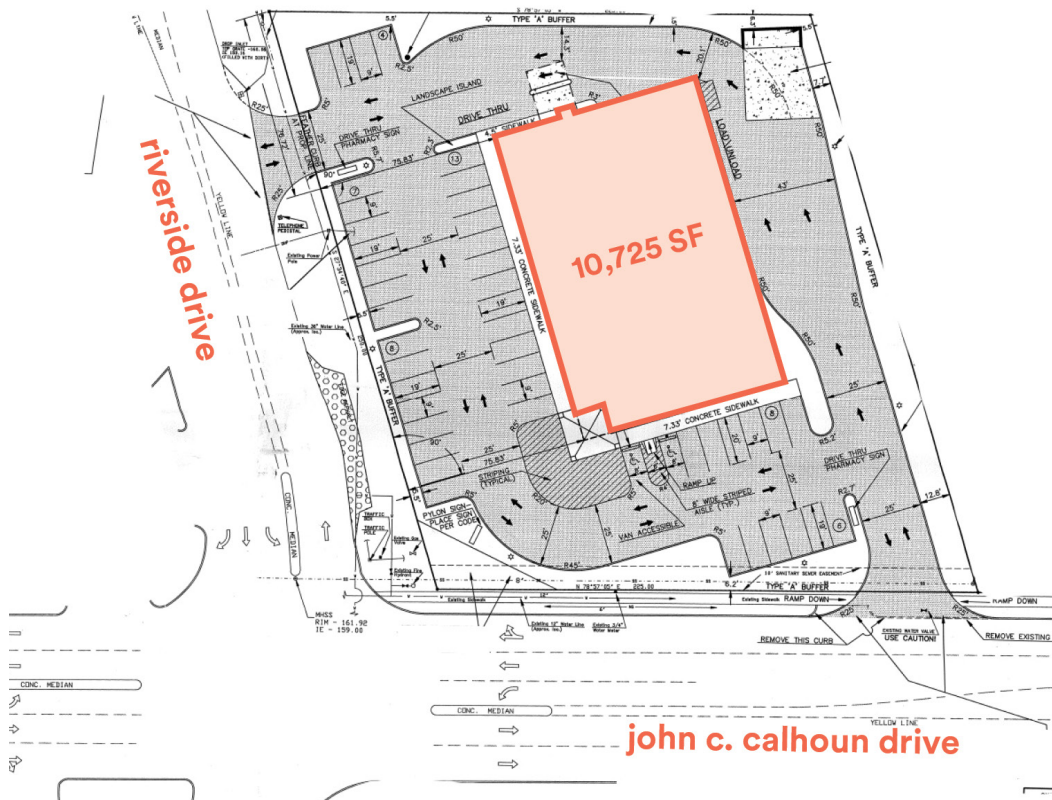
**carolina**  
**retail**  
**experts**  
concept to  
community

**John Orr, CCIM**  
☎ 854 900 3390  
✉ john@cre.expert

**Braden Jones**  
☎ 404 844 7044  
✉ braden@cre.expert

463 king street suite b. charleston, sc 29403 | cre.expert





#### 5 minutes

	6,530
	2025 Population
	6,322
	2030 Population
	\$27,554
	Median Household Income
	39.7
	Median Age

#### 7 minutes

	15,316
	2025 Population
	14,954
	2030 Population
	\$37,279
	Median Household Income
	31.6
	Median Age

Source: ESRI 2025

**carolina  
retail  
experts**  
concept to  
community

**John Orr, CCIM**  
📞 854 900 3390  
✉️ john@cre.expert

**Braden Jones**  
📞 404 844 7044  
✉️ braden@cre.expert

We obtained the information above from sources we believe to be reliable. However, we have not verified its accuracy and make no guarantee, warranty or representation about it. It is submitted subject to the possibility of errors, omissions, change of price, rental or other conditions, prior sale, lease or financing, or withdrawal without notice. We include projections, opinions, assumptions or estimates for example only, and they may not represent current or future performance of the property. You and your tax and legal advisors should conduct your own investigation of the property and transaction.