

2 Acres For Ground Lease



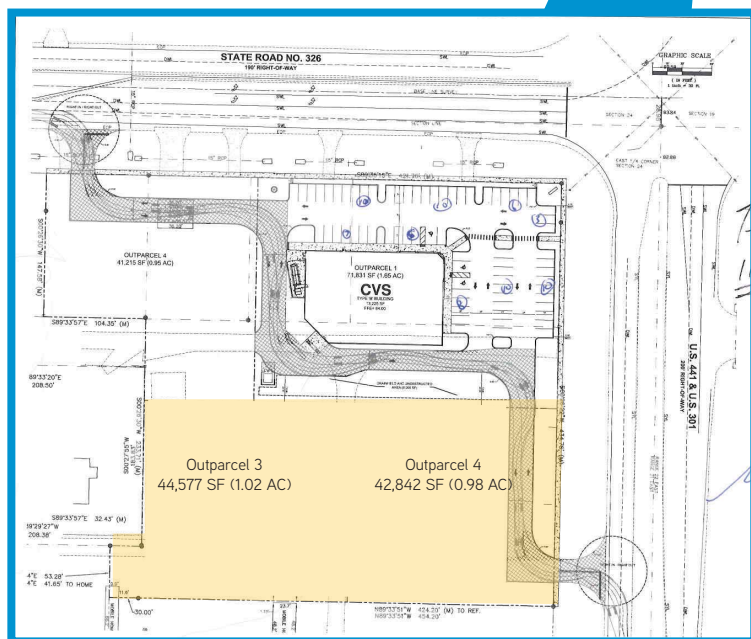
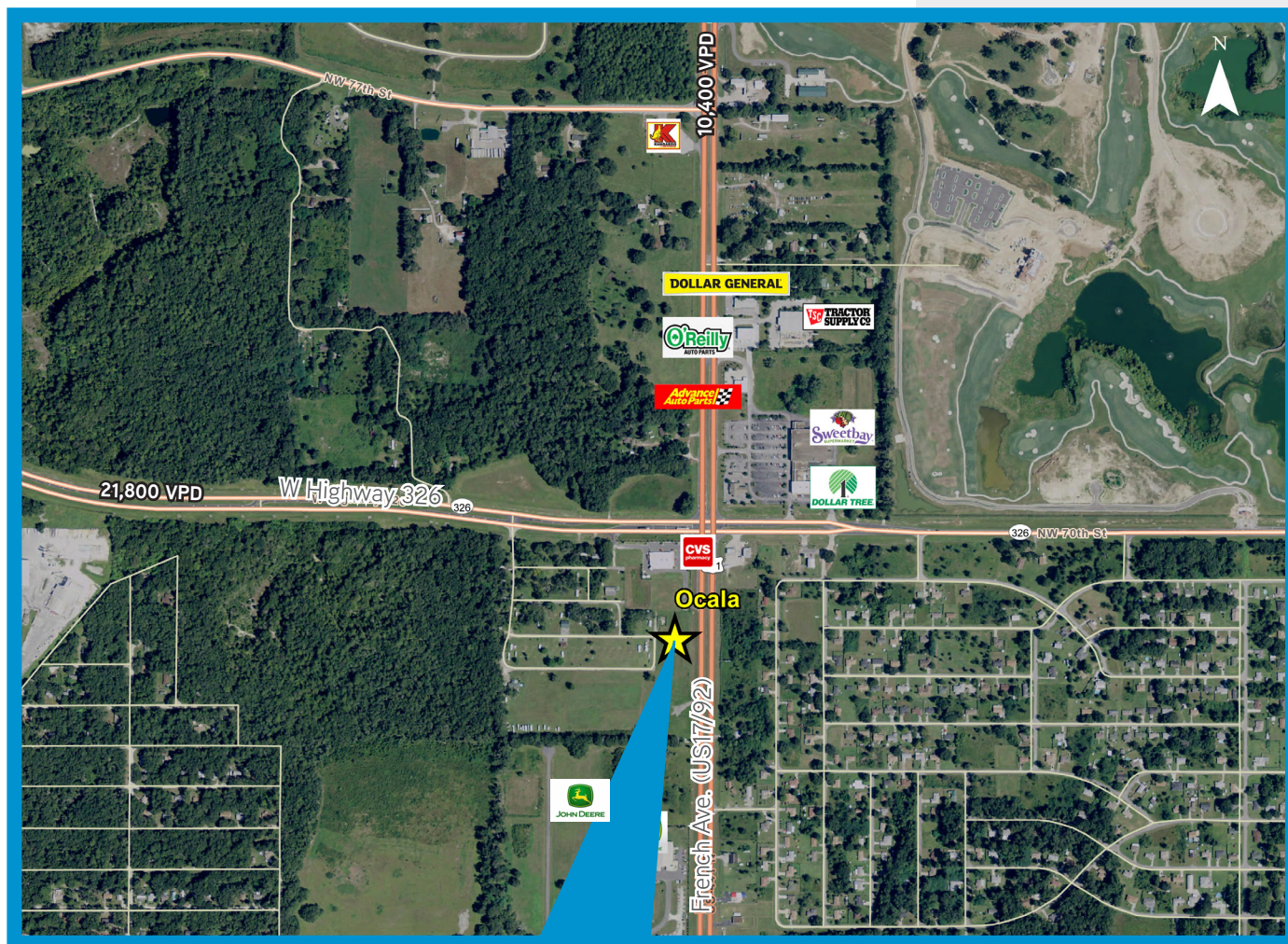
	1 Mile	3 Miles	5 Miles
Total Population	1,161	10,582	46,100
Total Households	417	4,143	15,902
Average HH Income	\$50,626	\$46,832	\$45,481

SCOTT CORBIN
MANAGING DIRECTOR, RETAIL SERVICES
+1 407 362 6164
SCOTT.CORBIN@COLLIERS.COM

ANTONINO POMA
ASSOCIATE, RETAIL SERVICES
+ 1 407 362 6157
ANTONINO.POMA@COLLIERS.COM

COLLIERS INTERNATIONAL | CENTRAL FLORIDA
255 South Orange Avenue, Suite 1300
Orlando, FL 32801
www.colliers.com/centralflorida

Market Aerial



Contact Us

SCOTT CORBIN

+ 1 407 362 6164

Scott.Corbin@colliers.com

ANTONINO POMA

+ 1 407 362 6157

Antonino.Poma@colliers.com

COLLIERS INTERNATIONAL
255 South Orange Avenue Suite 1300
Orlando, FL 32801

www.colliers.com/centralflorida

This document has been prepared by Colliers International Central Florida for advertising and general information only. Colliers International Central Florida makes no guarantees, representations or warranties of any kind, expressed or implied, regarding the information including, but not limited to, warranties of content, accuracy and reliability. Any interested party should undertake their own inquiries as to the accuracy of the information. Colliers International Central Florida excludes unequivocally all inferred or implied terms, conditions and warranties arising out of this document and excludes all liability for loss and damages arising there from. This publication is the copyrighted property of Colliers International and/or its licensor(s). © 2013. All rights reserved.



Central Florida