



The Right Places, The Right Spaces

SL
STRATEGIC
LOCATIONS



2211 South Eola Road

Aurora, IL

Suburban Chicago Storefront



Pharmacy



Address

2211 South Eola Road
Aurora, IL 60503

Availability

1,816 SF

- Adjacent to former CVS pharmacy
- Pylon sign
- 17 parking spaces
- S Eola Rd. 7,589 VPD
- Hafenrichter Rd. 7,435 VPD



Property Details

Address

2211 South Eola Road
Aurora, IL 60503

Availability

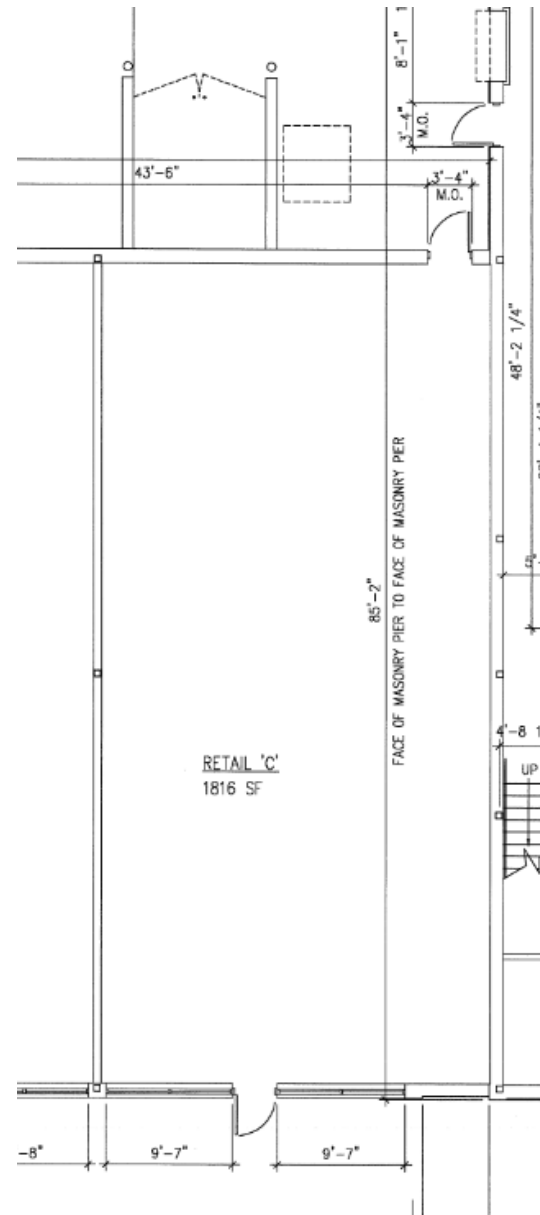
1,816 SF

Lease

Sub-lease or Long-term
Ground Lease

NNN

Call for rate





Site Visuals



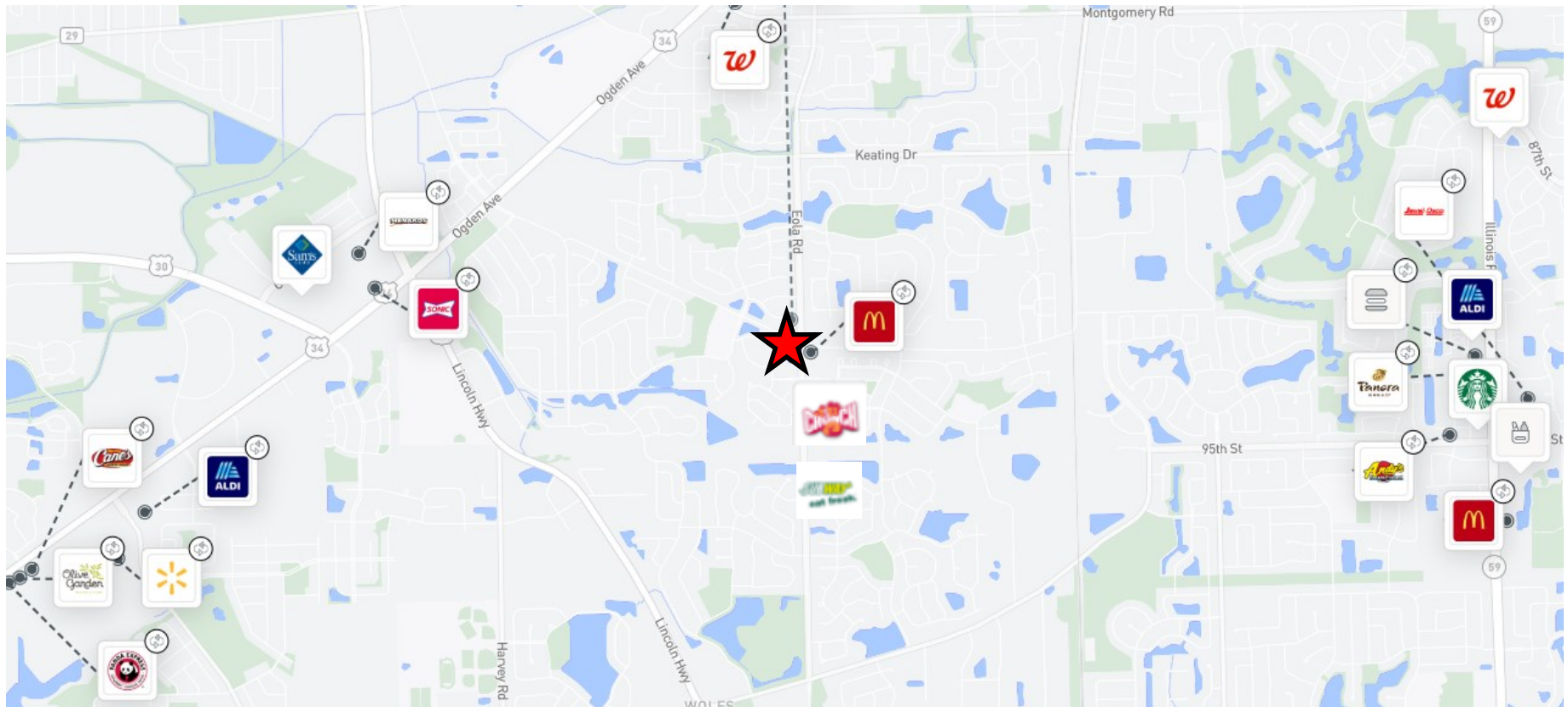


Demographics

<u>Demographics</u>	<u>1 Mile</u>	<u>3 Miles</u>	<u>5 Miles</u>
Population:	65,212	130,449	243,495
Households:	23,311	47,055	89,754
Average HH Income:	\$154,532	\$179,466	\$169,433



What's Nearby: 5-Miles





Presented by

Abbell Associates, LLC

30 N. LaSalle Street, Suite 2120, Chicago, Illinois 60602

www.abbell.com

Tom Walsh

Partner/Managing Broker

tom@abbell.com

847-421-4882

Joe Sauer

President of Retail/Technology

joe@abbell.com

(312) 961-8748

The Right Places, The Right Spaces

Marketing Services by

www.strategic-locations.com



© 2024 Strategic Locations. All rights reserved. This information has been obtained from sources believed reliable but has not been verified for accuracy or completeness. You should conduct a careful, independent investigation of the property and verify all information. Any reliance on this information is solely at your own risk. The Abbell Associates, LLC logo and name are service marks of Abbell Associates, LLC. All other marks displayed on this document are the property of their respective owners, and the use of such logos does not imply any affiliation with or endorsement. Photos are the property of their respective owners.