

1101 MARKET STREET

MID-MARKET DOWNTOWN SAN FRANCISCO

RETAIL
FOR SUBLEASE



KAZUKO MORGAN
Vice Chairman | Lic. 01070005
kazuko.morgan@cushwake.com
T. 415 773 3546

HEATHER TRIMBLE
Senior Associate | Lic. 02041605
heather.trimble@cushwake.com
T. 415 299 6683





26.2 Million
Visitors in 2019



\$10.2 Billion
in Tourism Spending in 2019



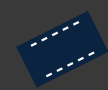
Public Transportation
BART, MUNI and Cable Car in proximity



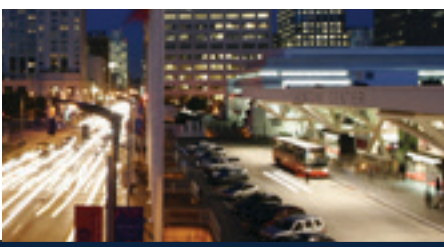
26,744 Hotel Rooms
Within 5 blocks



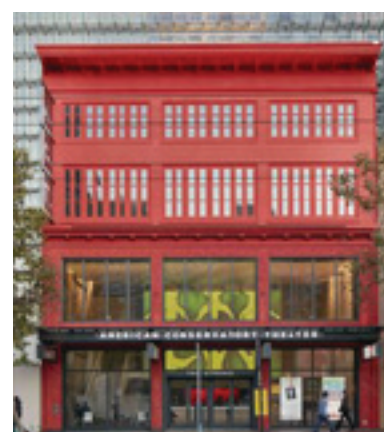
114 Events, 1.3M Visitors 2019
Moscone Convention Center



13 Concert & Theater
Venues Nearby



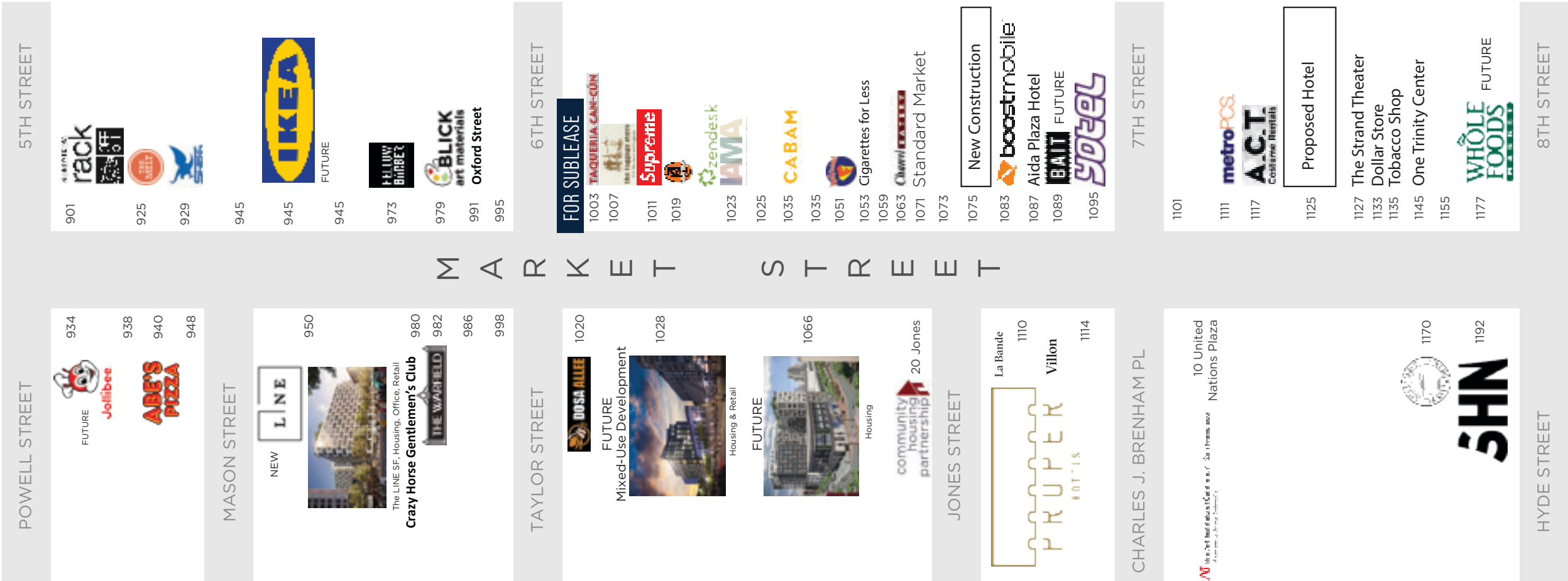
MID-MARKET SHOW CASE



MARKET STREET MAP

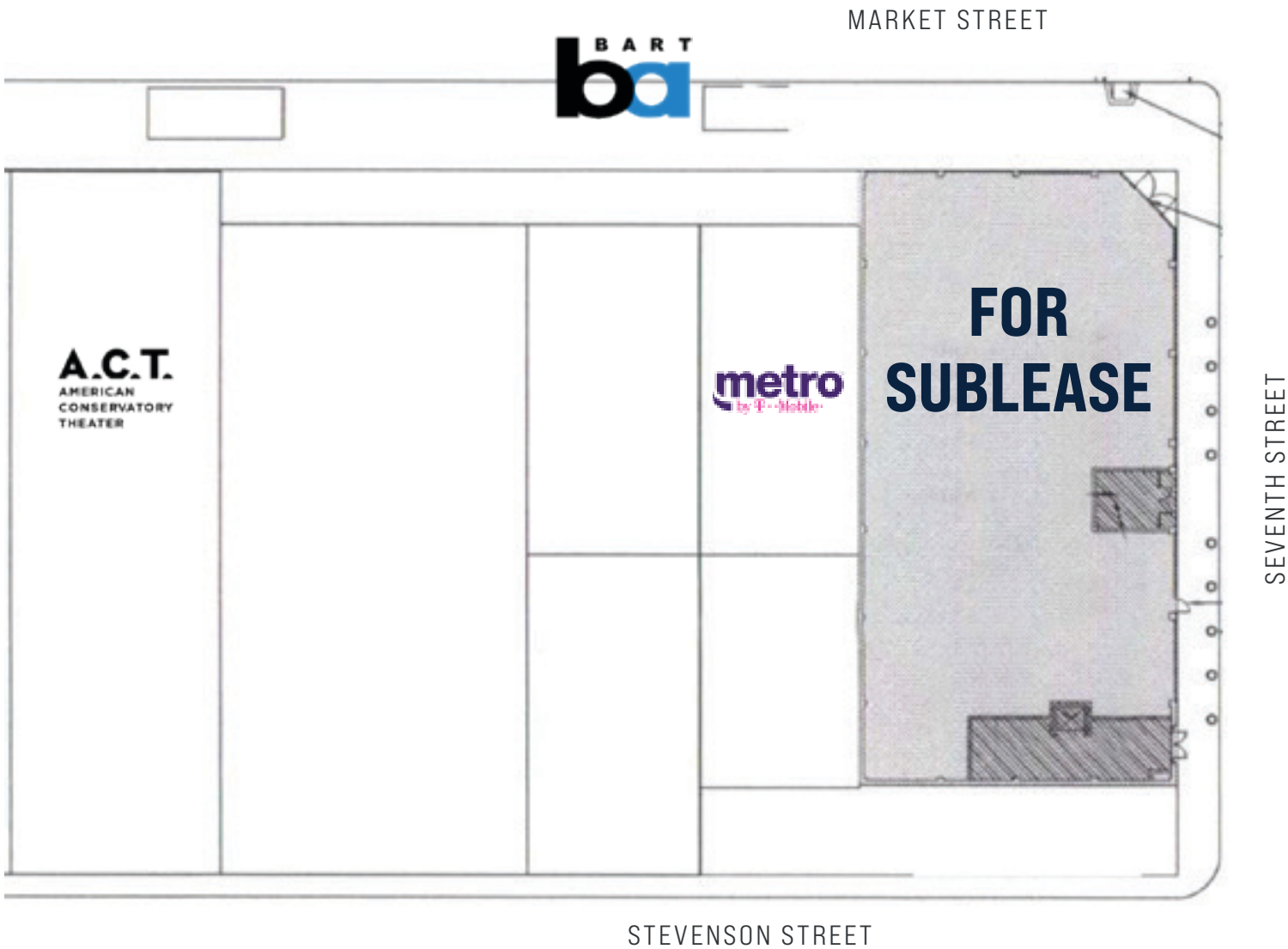
Serving San Francisco as the bridge between the Union Square Retail District, the Theatre District and SoMa District, Mid-Market has become a platform for critically acclaimed restaurants such as Villon; experiential bars including Mr. Tipple’s Recording Studio, Whitechapel, PianoFight, Fermentation Lab and Charmaine’s; as well as new upscale boutique hotels including the Line Hotel, Proper Hotel and Yotel. Contributing a constant flow of affluent daytime and evening patronage are some of the largest and most dominant tech companies in the world, which reside in the Mid-Market corridor, including Twitter, Uber, Zendesk, Zoosk, Yammer, Square and Dolby Labs.

As more mixed-use developments rise in the neighborhood such as brand new luxury condominiums at Serif, the highly anticipated Line Hotel, and introducing IKEA’s first San Francisco location, 1101 Market Street is the ultimate retail destination to serve the many visitors, working professionals and locals who are transforming this dynamic, coveted corridor.



FLOORPLAN

AVAILABLE THROUGH JANUARY 2028



± 9,317 SF GROUND
± 3,000 SF BASEMENT AVAILABLE

1101 MARKET STREET

RETAIL FOR SUBLEASE

