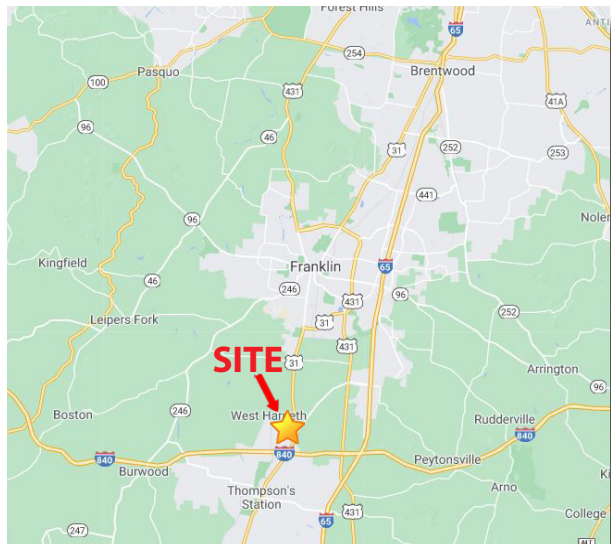


FOR SALE

## 995 Elliston Way Thompson's Station, TN 37179

**Lot Size** 1.43 Acres  
**Sales Price** \$ 1,950,000

- Close to fast-growing Spring Hill
- In front of Independence High School & Tollgate Village
- 2 blocks from I-840
- Graded pad zoned for retail



Demographics	1 mile	3 mile	5 mile
<b>Population</b>	3,894	12,166	49,968
<b>Avg HH Income</b>	\$ 100,508	\$ 132,810	\$ 121,813
<b># of Households</b>	1,272	4,007	16,632

Source: SitesUSA.com

For more information, contact:

**Arthur Perlen, CCIM**  
615-234-4919 direct  
aperlen@centenretail.com

**Barry Hardwick, CCIM**  
615-234-4934 direct  
bhardwick@centenretail.com

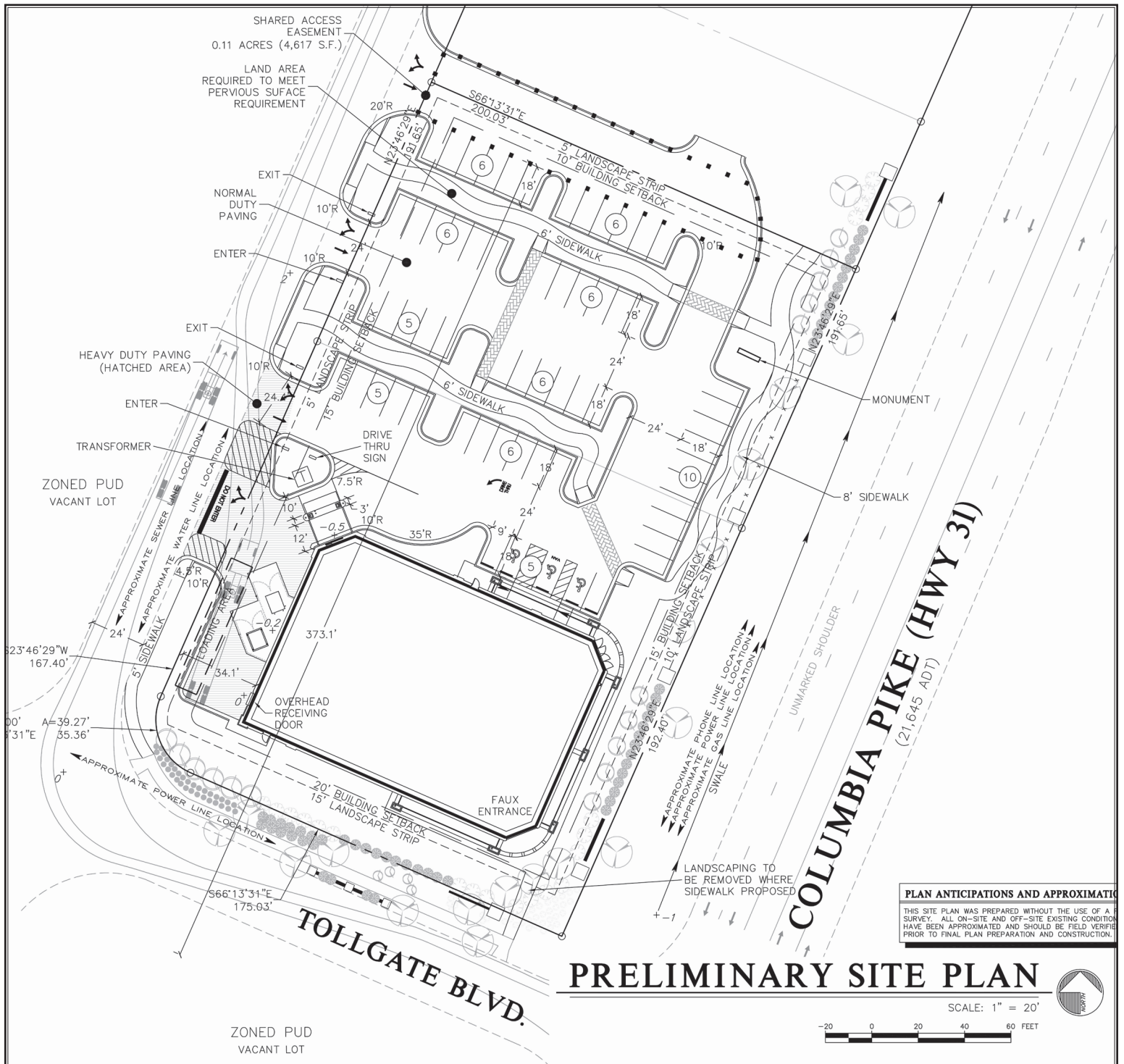
**Joseph Valenti**  
615-234-4908 direct  
jvalenti@centenretail.com

2505 21st Avenue South, Suite 201 | Nashville, TN 37212 | [www.centenretail.com](http://www.centenretail.com)

The information contained herein was obtained from sources believed reliable; however, Centennial Retail Services makes no guarantees, warranties, or representations as to the completeness or accuracy thereof. The presentation of this property is submitted subject to errors, omissions, change of price or conditions prior to sale or lease, or withdrawal without notice.

**Centennial**  
RETAIL SERVICES

# SAMPLE SITE PLAN



For more information, contact:

**Arthur Perlen, CCIM**  
615-234-4919 direct  
aperlen@centenretail.com

**Barry Hardwick, CCIM**  
615-234-4934 direct  
bhardwick@centenretail.com

**Joseph Valenti**  
615-234-4908 direct  
jvalenti@centenretail.com

2505 21st Avenue South, Suite 201 | Nashville, TN 37212 | [www.centenretail.com](http://www.centenretail.com)

The information contained herein was obtained from sources believed reliable; however, Centennial Retail Services makes no guarantees, warranties, or representations as to the completeness or accuracy thereof. The presentation of this property is submitted subject to errors, omissions, change of price or conditions prior to sale or lease, or withdrawal without notice.

**Centennial**  
RETAIL SERVICES