

FOR LEASE - 13,013 SF



## CVS PHARMACY

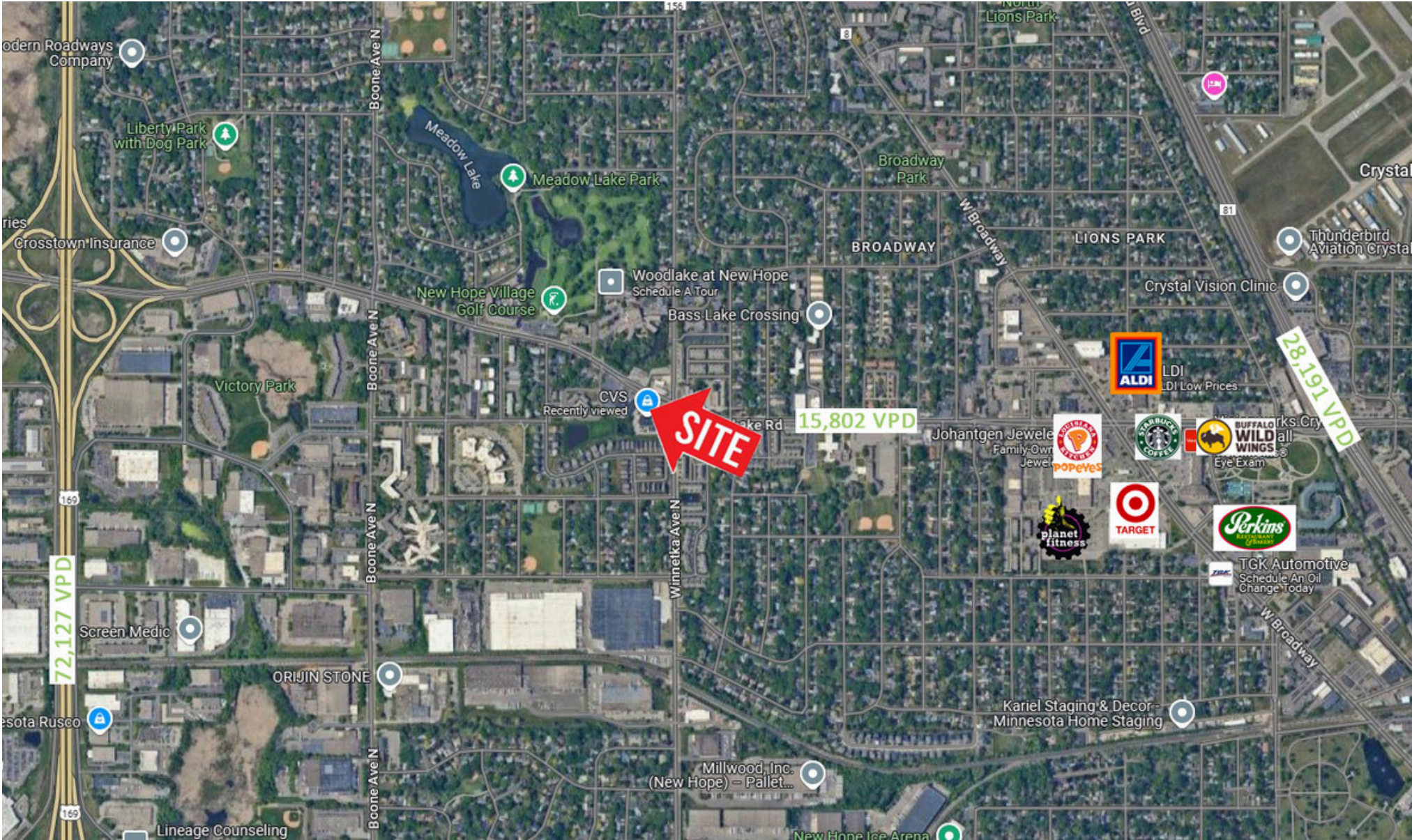
7901 BASS LAKE RD, NEW HOPE, MN 55428

Bloom Commercial Real Estate  
800 LaSalle Avenue | Suite 1250  
Minneapolis, MN 55402  
[www.bloomcommercial.com](http://www.bloomcommercial.com)



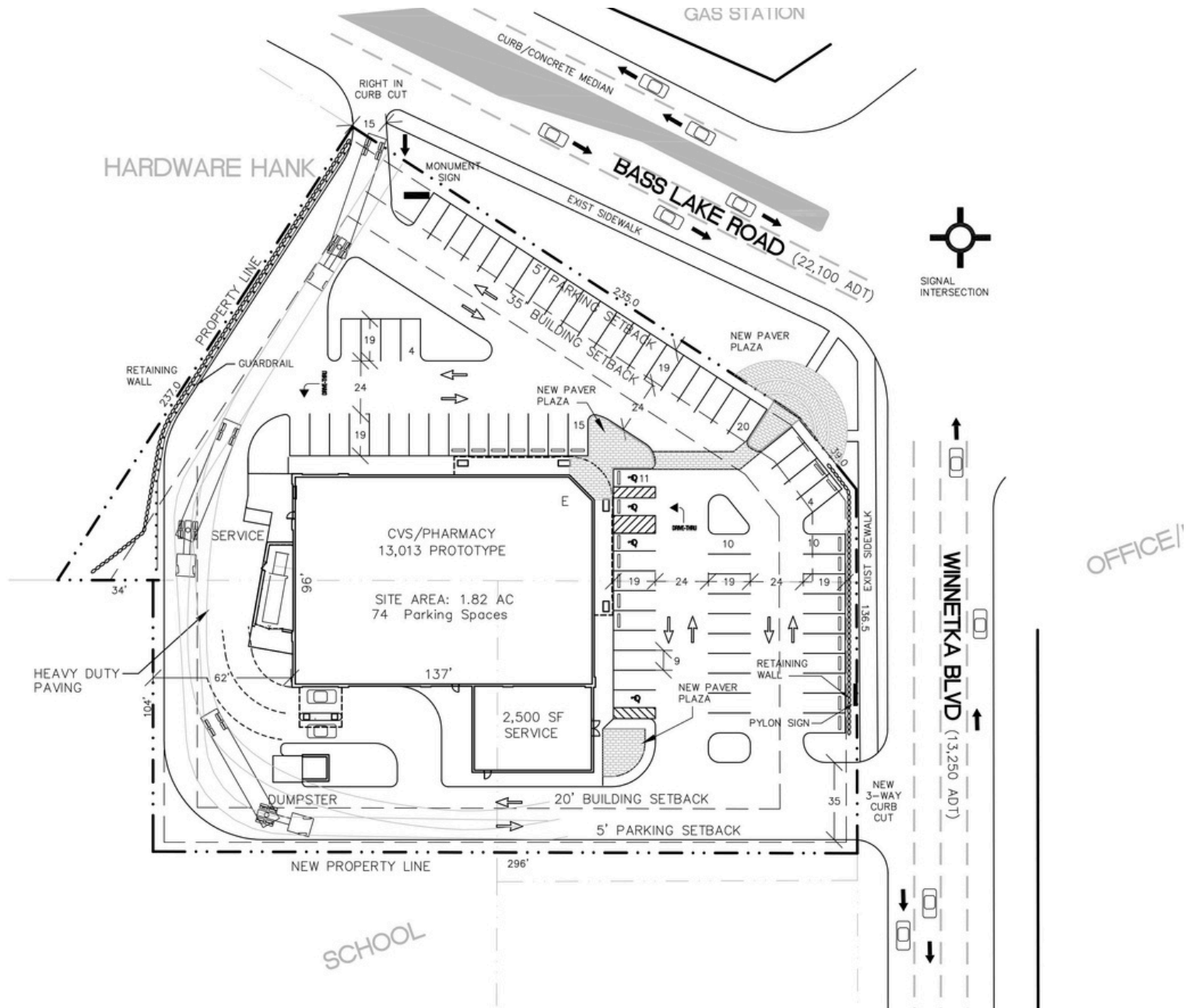


# AERIAL VIEW





# SITE PLAN



BLOOM COMMERCIAL  
REAL ESTATE

# PROPERTY HIGHLIGHTS

- Rare opportunity on busy Corner
- Freestanding Building with Pylon sign at Signalized corner
- Building very well cared for
- Area Tenants include Super Target; Aldi; Planet Fitness



## DEMOGRAPHICS

Radius	1 Mile	3 Miles	5 Miles
POPULATION	14,350	100,513	265,823
MEDIAN HH INCOME	\$76,311	\$89,002	\$98,248

### Traffic Counts

Winnetka Ave	9551 VPD
Bass Lake Rd	15802 VPD

## FOR MORE INFORMATION:

**Josh Bloom**

651.207.3157 (text or call)  
josh@bloomcommercial.com



BLOOM COMMERCIAL  
REAL ESTATE