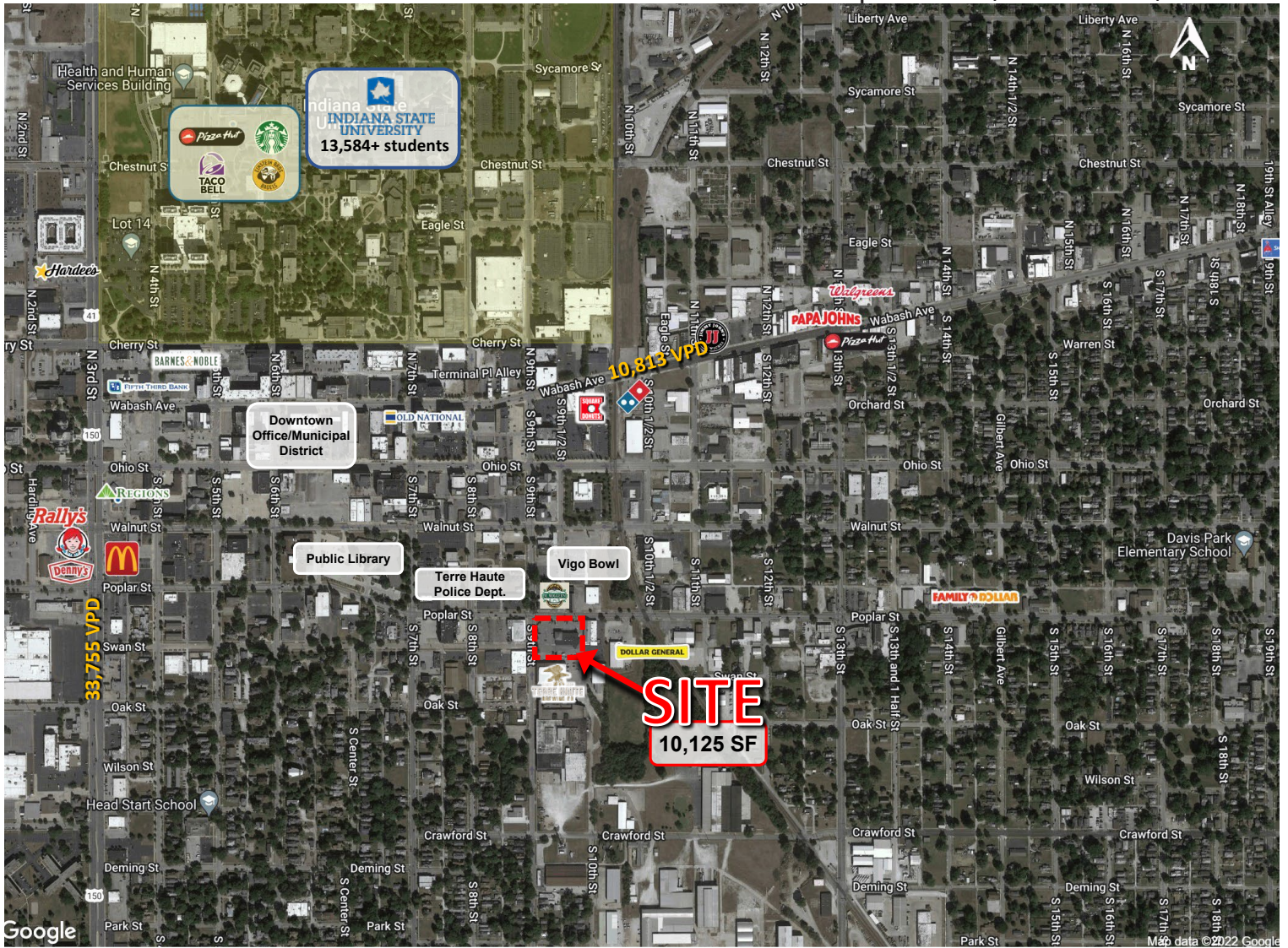


# FORMER FREESTANDING CVS

## 10,125 SF AVAILABLE | FOR SUBLEASE

**VERITAS**  
REALTY




905 Poplar Street, Terre Haute, IN 47807



### PROPERTY HIGHLIGHTS:

- 10,125 SF former CVS
- Minutes from downtown Terre Haute & Indiana State University
- Over 59,000 population in a 10 minute drive time with Average Household Incomes over \$58,000
- Marketed as a Sublease with opportunity for a Lease direct with ownership

### DEMOGRAPHICS

	 3 MILE	 5 MILE	 10 MILE
Population:	12,205	15,685	34,241
Households:	5,108	6,455	13,927
Daytime Pop:	8,634	11,447	23,535
Avg. HH Income:	\$77,748	\$80,022	\$83,977

**CONTACT: John Holloway**  
T: 317-472-1800  
E: John@VeritasRealty.com

**FOR  
SUBLEASE**

[www.VeritasRealty.com](http://www.VeritasRealty.com)



# FORMER FREESTANDING CVS

10,125 SF AVAILABLE | FOR SUBLEASE

## SITE AERIAL

905 Poplar Street, Terre Haute, IN 47807



Information within this brochure has been obtained from sources believed reliable, but we make no representations or warranties, expressed or implied, as to the accuracy of the information. Prospective tenant and tenant representatives must verify the information and bears all risk for any inaccuracies as

**CHAINLINKS**  
RETAIL ADVISORS

**CONTACT:**

**John Holloway**

T: 317-472-1800

E: John@VeritasRealty.com

**VERITAS**  
REALTY

www.VeritasRealty.com