

# Mundelein | Former CVS Building

2075 South Lake Street, Mundelein IL (Rte 83 & Rte 45)



## OFFERING SUMMARY:

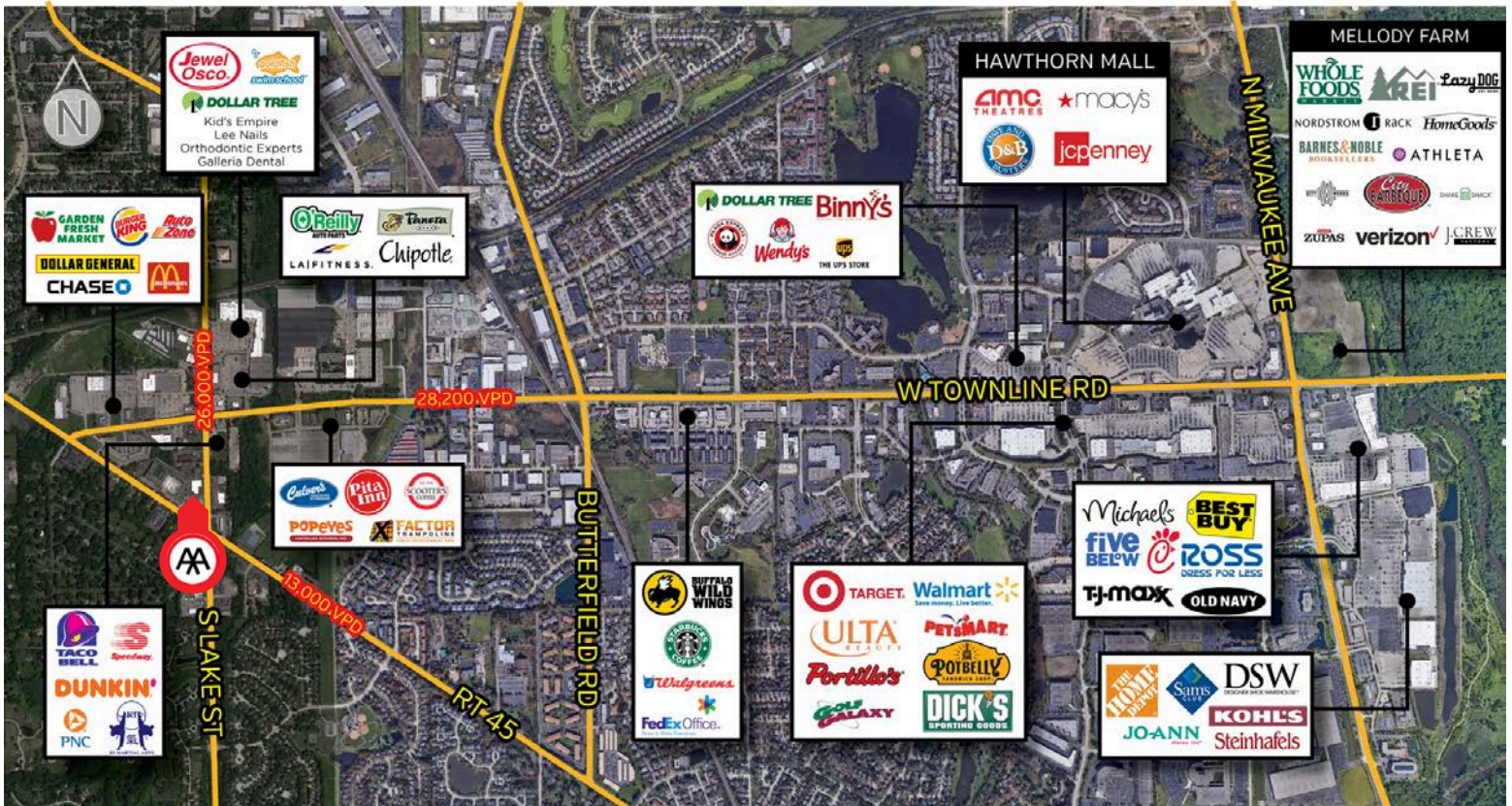
Building Size:	13,225 SF
Available SF:	13,225 SF
Building Class:	C
Lot Size:	1.16 AC
Year Built:	2000
Location:	NWC S Lake St & Route 45
Zoning:	C-2
Parking:	65 Surface Spaces
Traffic Count:	38,900 VPD

# Mundelein | Former CVS Building

2075 South Lake Street, Mundelein IL (Rte 83 & Rte 45)



## AERIAL RETAIL MAP & DEMOGRAPHICS



### 1 & 3 MILE DEMOGRAPHICS

	LAKE COUNTY	1 MILE	3 MILE
Population		8,511	65,703
Households		3,150	23,806
Average HH Income		\$144,671	\$160,385
Daytime Population		8,645	61,925



**JOE SAUER**

(M) 312.961.8748  
joe@abell.com

**TOM WALSH**

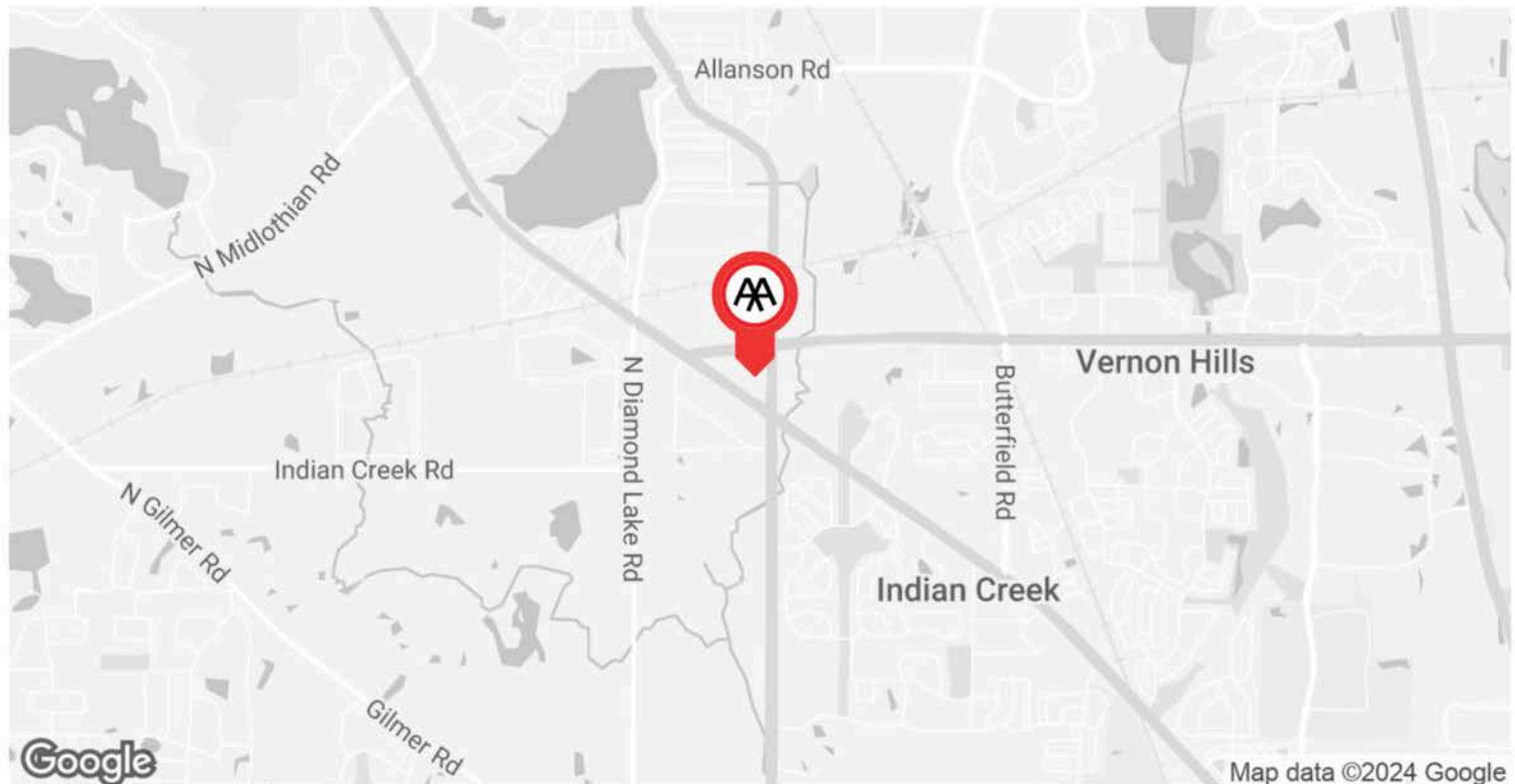
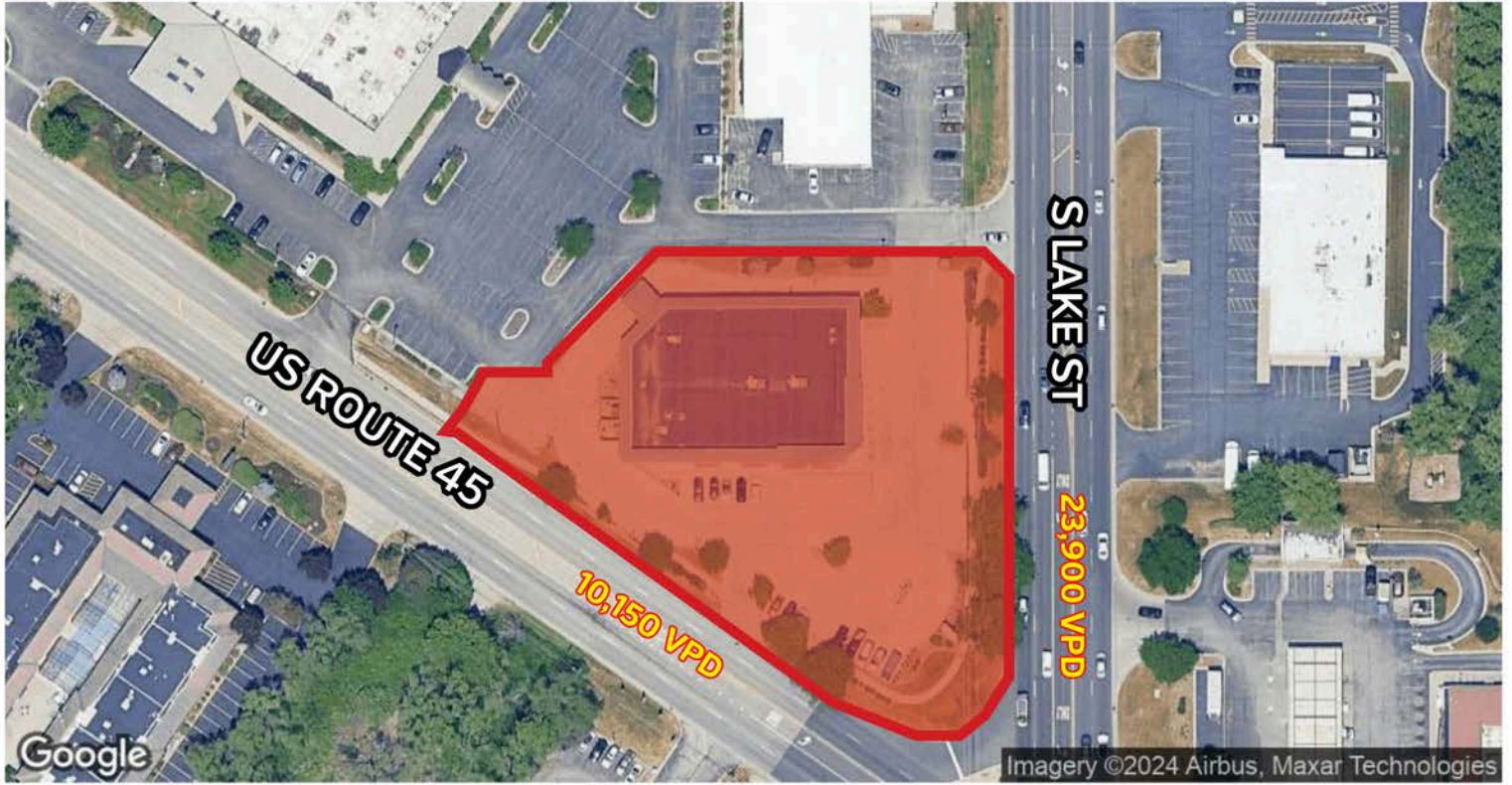
(M) 847.421.4882  
tom@abell.com

# Mundelein | Former CVS Building

2075 South Lake Street, Mundelein IL (Rte 83 & Rte 45)



## BUILDING AERIAL & LOCATION MAP



**JOE SAUER**

(M) 312.961.8748  
joe@abell.com

**TOM WALSH**

(M) 847.421.4882  
tom@abell.com



**FOR MORE INFORMATION:**



**JOE SAUER**  
(M) 312.961.8748  
joe@abbell.com

**TOM WALSH**  
(M) 847.421.4882  
tom@abbell.com

ABELL ASSOCIATES

30 N. LaSalle Street | Suite 2120 | Chicago, Illinois 60602