



For Lease

Retail Availability • CVS Anchored Center • Property Highlights
1368 S Sheldon Road | Plymouth, MI

- 4,355 SF Endcap Space
- +/- 34' x 130'
- ADT of 25,000 on Sheldon Road & 21,000 on Ann Arbor Road
- Zoning = ARC: Ann Arbor Road Corridor
- Ample Parking

Demographics

	1 MILE	3 MILE	5 MILE
POPULATION	11,988	71,362	184,742
AVG. INCOME	\$133,987	\$123,207	\$122,069
HOUSEHOLDS	4,986	28,906	73,968



Lou Frango
 Direct | +1 248 226 1678
 lou.frango@colliers.com

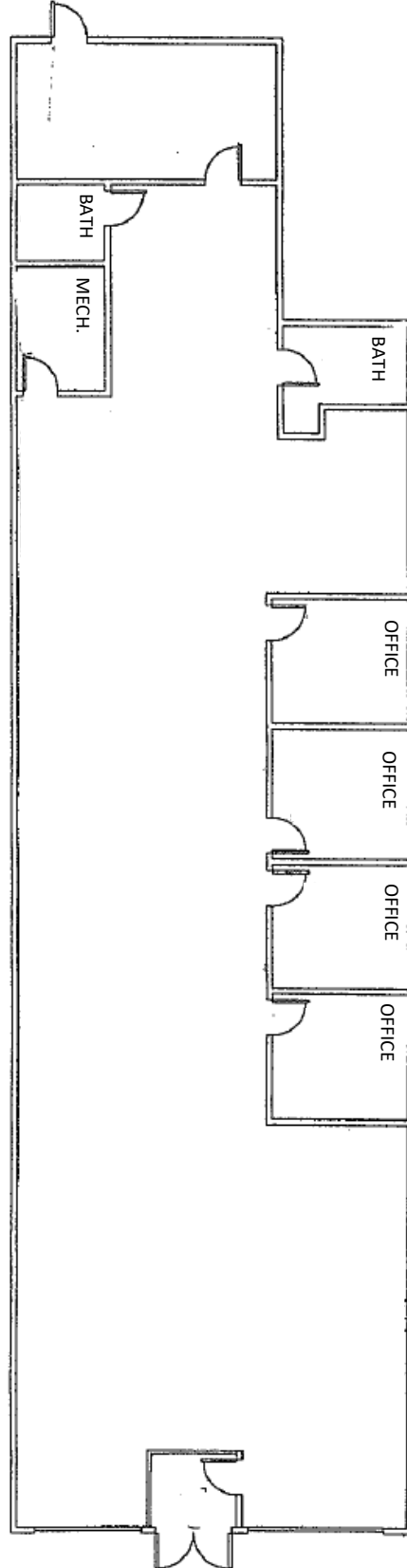
Property Photos



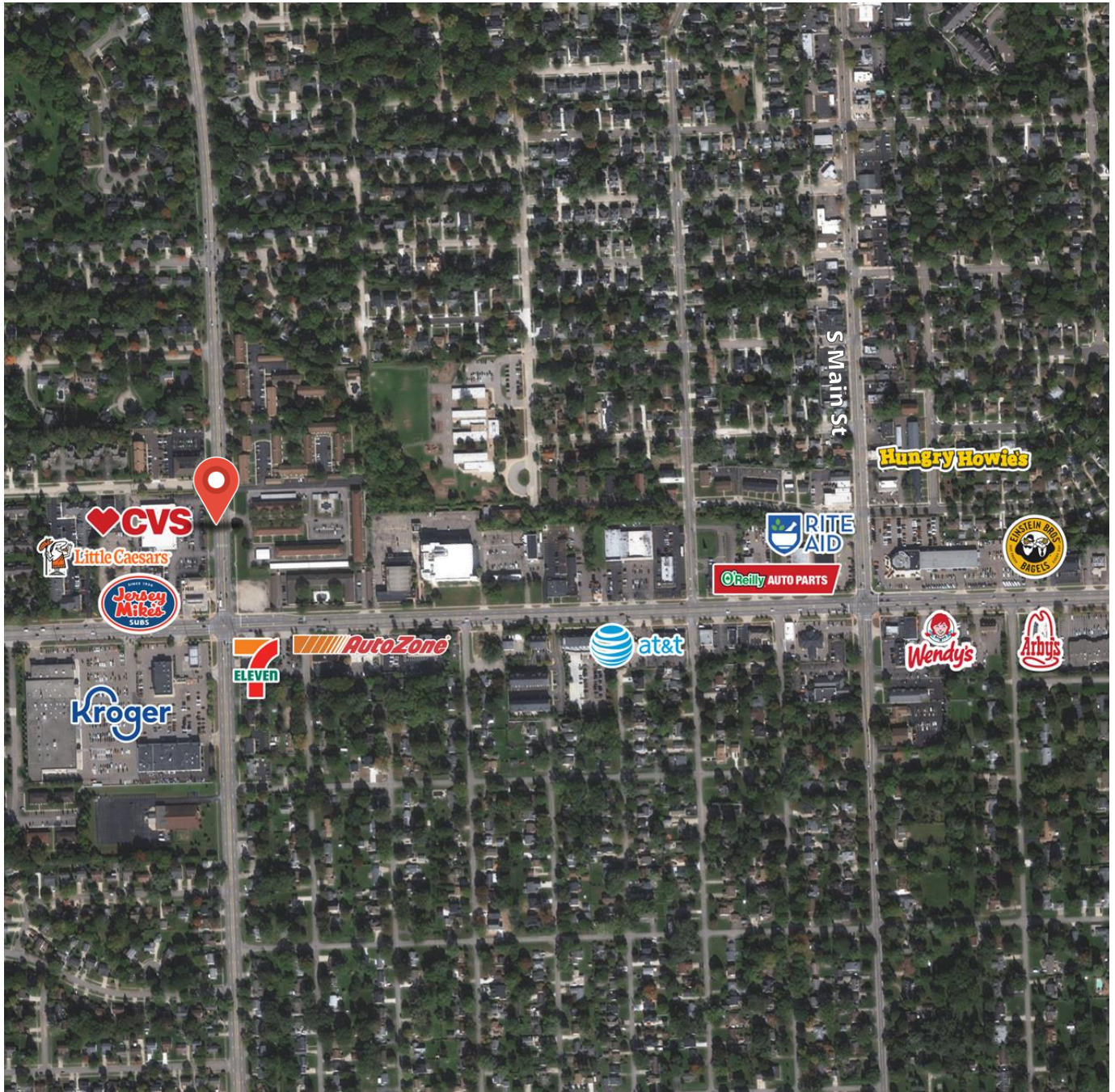
Aerial



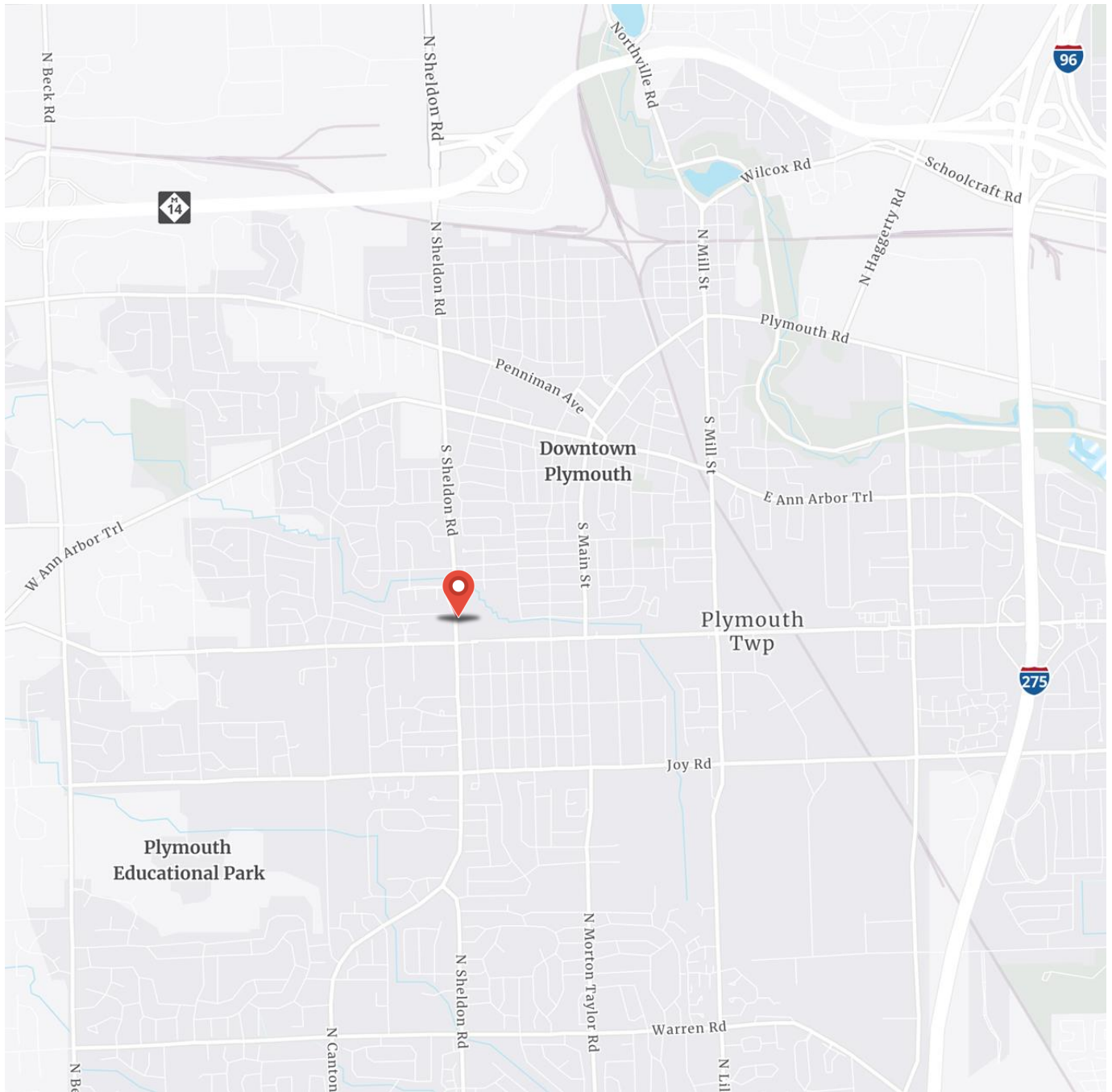
Space Plan



Merchant Map



Location Map



Lou Frango
Direct | +1 248 226 1678
lou.frango@colliers.com



Demographic One Page Summary

1,3,5 mile radius rings

Prepared by Colliers
Latitude: 42.359630
Longitude: -83.479395

	1 mile radius	3 mile radius	5 mile radius
Current Year Summary			
Total Population	11,988	71,362	184,742
Total Households	4,986	28,906	73,968
Total Family Households	3,341	19,735	49,682
Average Household Size	2.39	2.46	2.48
Median Age	45.4	44.0	42.2
Population Age 25+	8,702	51,712	132,099
2010-2021 Population: Annual Growth Rate (CAGR)	-0.03%	0.02%	0.18%
Five Year Projected Trends: Annual Rate (CAGR)			
Population	-0.15%	-0.11%	-0.04%
Households	-0.09%	-0.05%	0.01%
Families	-0.17%	-0.13%	-0.07%
Median Household Income	1.71%	2.03%	2.29%
Current Year Population by Sex			
Male Population	5,794	34,724	89,296
% Male	48.3%	48.7%	48.3%
Female Population	6,194	36,638	95,446
% Female	51.7%	51.3%	51.7%
Current Year Race and Ethnicity			
Total	11,989	71,361	184,742
White Alone	91.4%	83.3%	75.8%
Black Alone	2.8%	4.7%	7.8%
American Indian Alone	0.4%	0.2%	0.2%
Asian Alone	3.1%	8.9%	13.0%
Pacific Islander Alone	0.0%	0.0%	0.0%
Some Other Race Alone	0.3%	0.6%	0.7%
Two or More Races	2.0%	2.3%	2.5%
Hispanic Origin	2.8%	3.3%	3.4%
Diversity Index	20.8	34.1	44.2
Current Year Educational Attainment			
Total	8,705	51,714	132,097
Less than 9th Grade	1.0%	1.3%	1.2%
9th - 12th Grade, No Diploma	2.2%	2.1%	2.7%
High School Graduate	12.8%	15.7%	15.5%
GED/Alternative Credential	1.6%	1.6%	1.9%
Some College, No Degree	17.2%	18.9%	18.5%
Associate Degree	6.3%	7.7%	8.0%
Bachelor's Degree	33.4%	29.1%	29.2%
Graduate/Professional Degree	25.5%	23.6%	23.0%
Current Year Income and Households Summary			
Median Household Income	\$101,143	\$91,950	\$88,342
Average Household Income	\$133,987	\$123,207	\$122,069
Per Capita Income	\$55,947	\$49,336	\$48,772
Current Year Summary Business Data			
Total Businesses	637	3,184	6,547
Total Daytime Population	13,258	87,503	206,908
Daytime Population: Workers	7,452	52,446	114,218
Daytime Population: Residents	5,806	35,057	92,690

Data Notes:

- Household population includes persons not residing in group quarters. Average Household Size is the household population divided by total households. Persons in families include the householder and persons related to the householder by birth, marriage, or adoption.
- Income represents the preceding year, expressed in current dollars. Household income includes wage and salary earnings, interest dividends, net rents, pensions, SSI and welfare payments, child support, and alimony.
- Per Capita Income represents the income received by all persons aged 15 years and over divided by the total population.
- Persons of Hispanic Origin may be of any race. The Diversity Index measures the probability that two people from the same area will be from different race/ethnic groups.