



CONTACT US



Lou Frango
248 226 1678
lou.frango@colliers.com



Shawn O'Brien
517 662 3529
shawn.obrien@colliers.com



Kim Burm
517 512 7407
burm.kim@colliers.com

Colliers Detroit
400 W 4th Street, Suite 350
Royal Oak, MI 48067
colliers.com/detroit



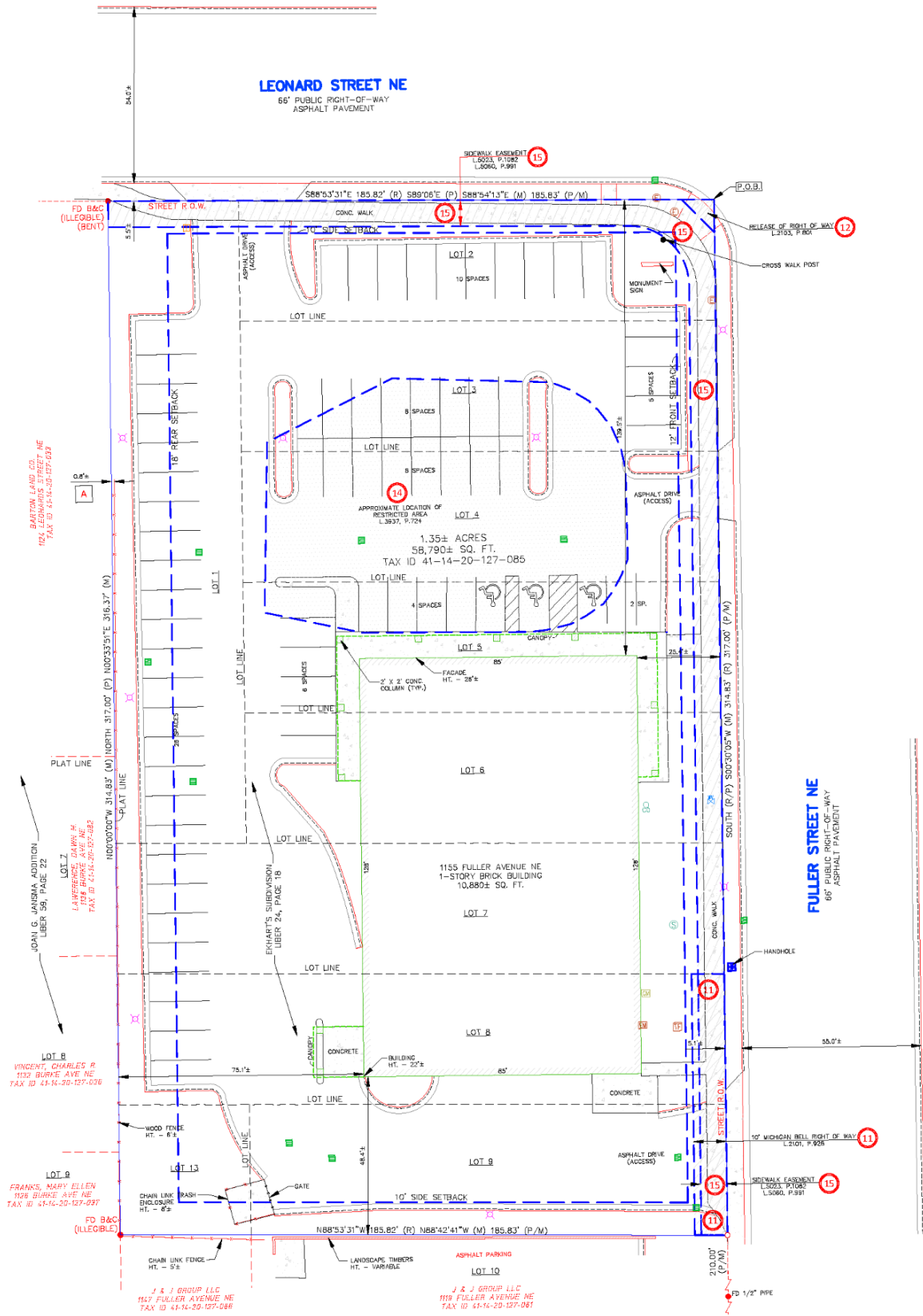
FOR SUBLEASE

1155 Fuller Avenue NE Grand Rapids, MI

Retail Building Available

Property Highlights

- Former CVS built in 2000
- 10,880 SF (85' x 128')
- Traffic Counts ADT: 21,000 on Fuller Avenue
16,000 on Leonard Street
- Zoning: TN-TBA
- Pylon Sign and Drive Through Window
- 72 Parking Spaces



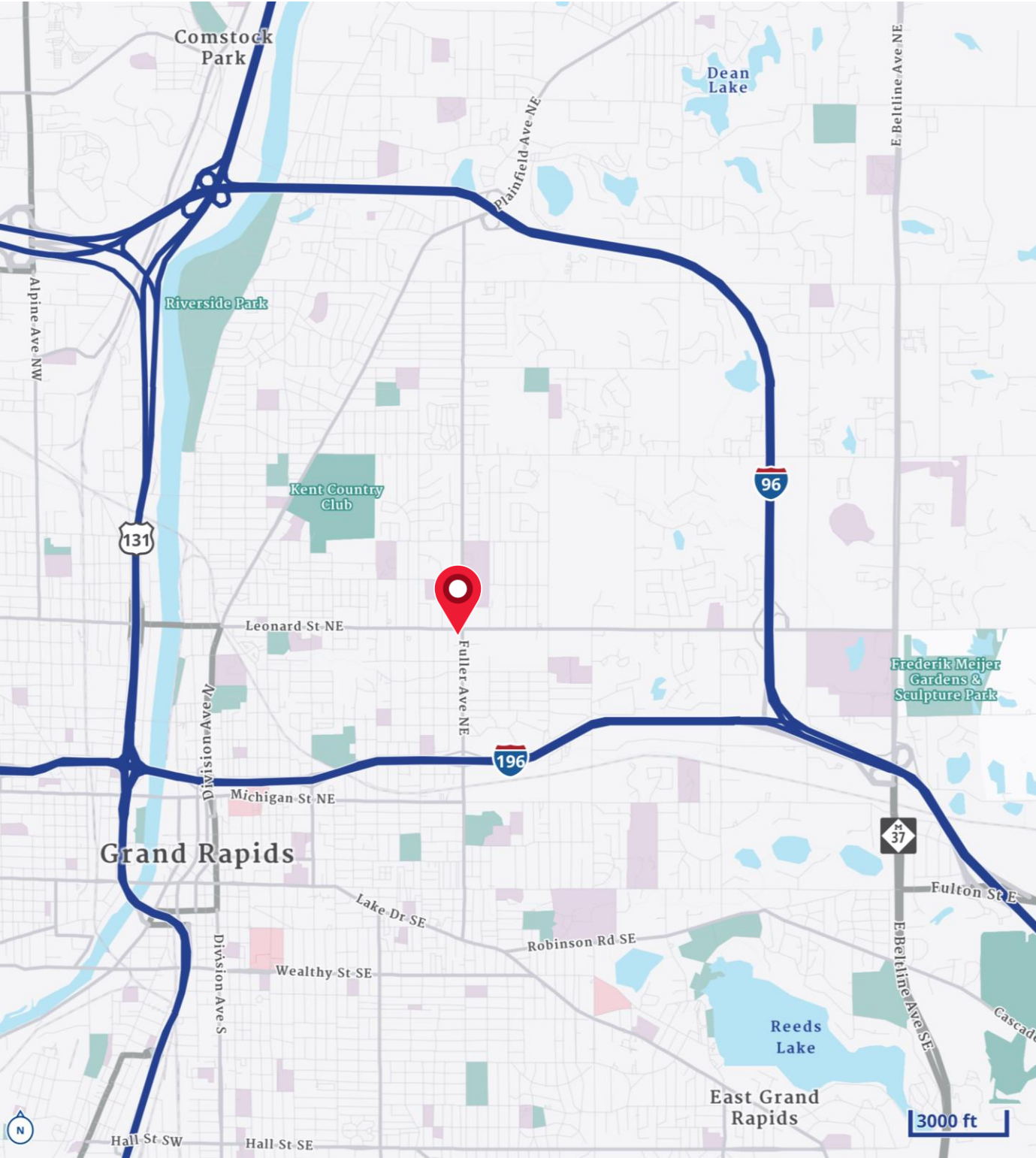
FORMER CVS FOR SUBLEASE

Colliers

Aerial Merchant Map



Location Map



Demographics

CURRENT YEAR SUMMARY	1 MILE RADIUS	2 MILE RADIUS	3 MILE RADIUS
Total Population	14,993	57,402	115,291
Total Households	6,111	26,064	49,291
Total Family Households	2,996	11,639	23,838
Average Household Size	2.28	2.13	2.27
Median Age	34.3	33.3	32.8
Population Age 25+	10,782	41,375	79,437
2010 – 2021 Population: Annual Growth Rate (CAGR)	-0.03%	0.32%	0.53%
2022 – 2023 Population: Annual Growth Rate (CAGR)	-0.14%	0.24%	0.31%
5 YEAR PROJECTED TRENDS: ANNUAL RATE			
Population	-0.25%	0.37%	0.49%
Households	-0.02%	0.64%	0.79%
Families	-0.30%	0.35%	0.50%
Median Household Income	3.00%	2.53%	2.57%
CURRENT YEAR POPULATION BY SEX			
Male Population / % Male	7,786 / 51.9%	28,672 / 50.0%	57,742 / 50.1%
Female Population / % Female	7,207 / 48.1%	28,730 / 50.0%	57,549 / 49.9%
INCOME & HOUSEHOLDS SUMMARY			
2020 Median Household Income	\$58,421	\$68,781	\$69,496
Average Household Income	\$74,000	\$88,882	\$93,352
Per Capita Income	\$30,900	\$40,533	\$39,821
SUMMARY BUSINESS DATA			
Total Businesses	377	2,620	5,561
Total Daytime Population	13,550	68,889	155,052
Daytime Population: Workers	6,331	45,525	104,914
Daytime Population: Residents	7,219	23,364	50,138

Data Notes:

- Household population includes persons not residing in group quarters. Average Household Size is the household population divided by total households. Persons in families include the householder and persons related to the householder by birth, marriage, or adoption.
- Income represents the preceding year, expressed in current dollars. Household income includes wage and salary earnings, interest dividends, net rents, pensions, SSI and welfare payments, child support, and alimony.
- Per Capita Income represents the income received by all persons aged 15 years and over divided by the total population.



Lou Frango
248 226 1678
lou.frango@colliers.com



Shawn O'Brien
517 662 3529
shawn.obrien@colliers.com



Kim Burm
517 512 7407
burm.kim@colliers.com