



FOR SUBLEASE

2375 28th Street SW Wyoming, MI

10,880 SF of Retail Building

CONTACT US



Lou Frango
248 226 1678
lou.frango@colliers.com



Shawn O'Brien
517 662 3529
shawn.obrien@colliers.com

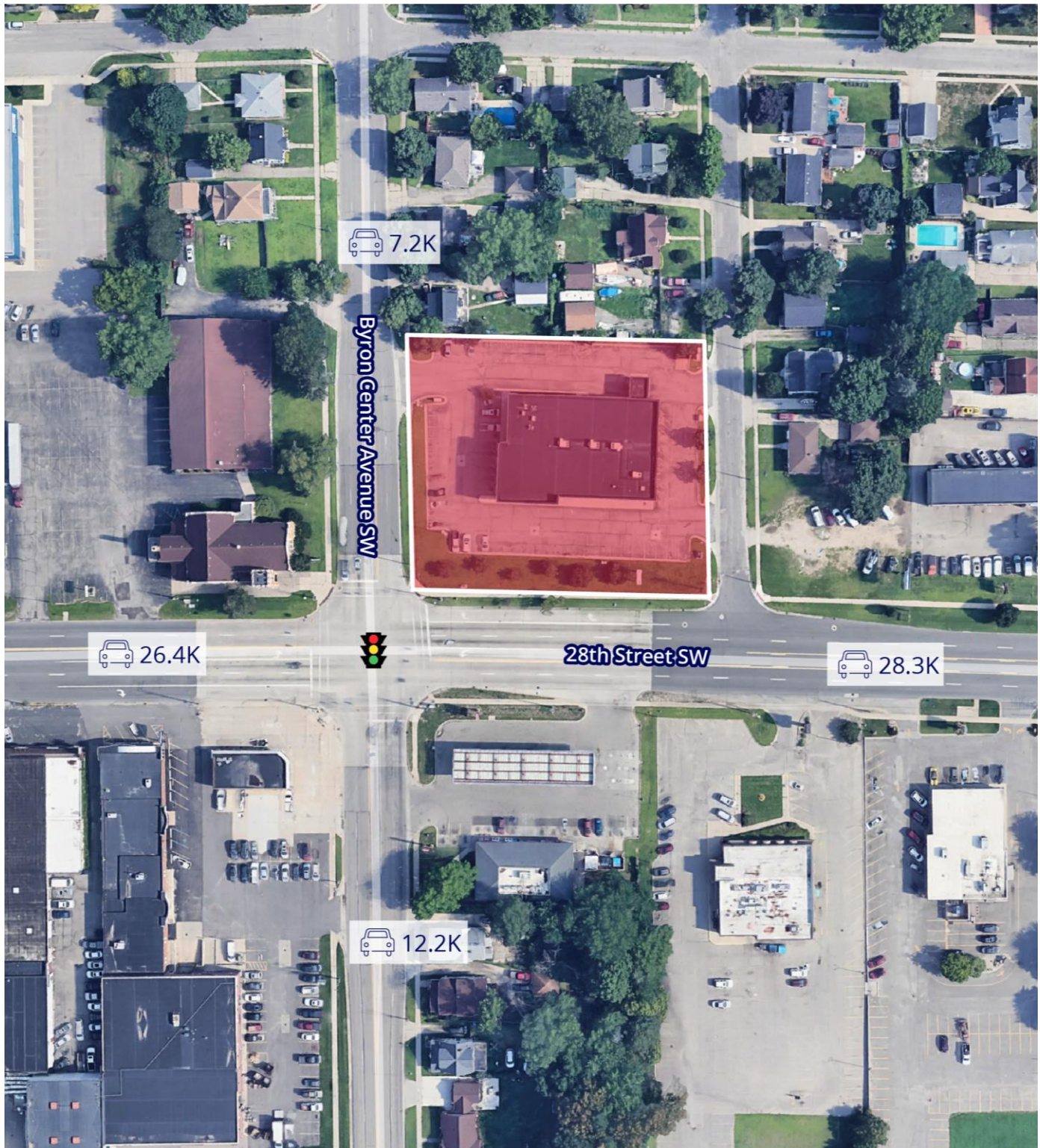
Colliers Detroit
400 W 4th Street, Suite 350
Royal Oak, MI 48067
colliers.com/detroit



Property Highlights

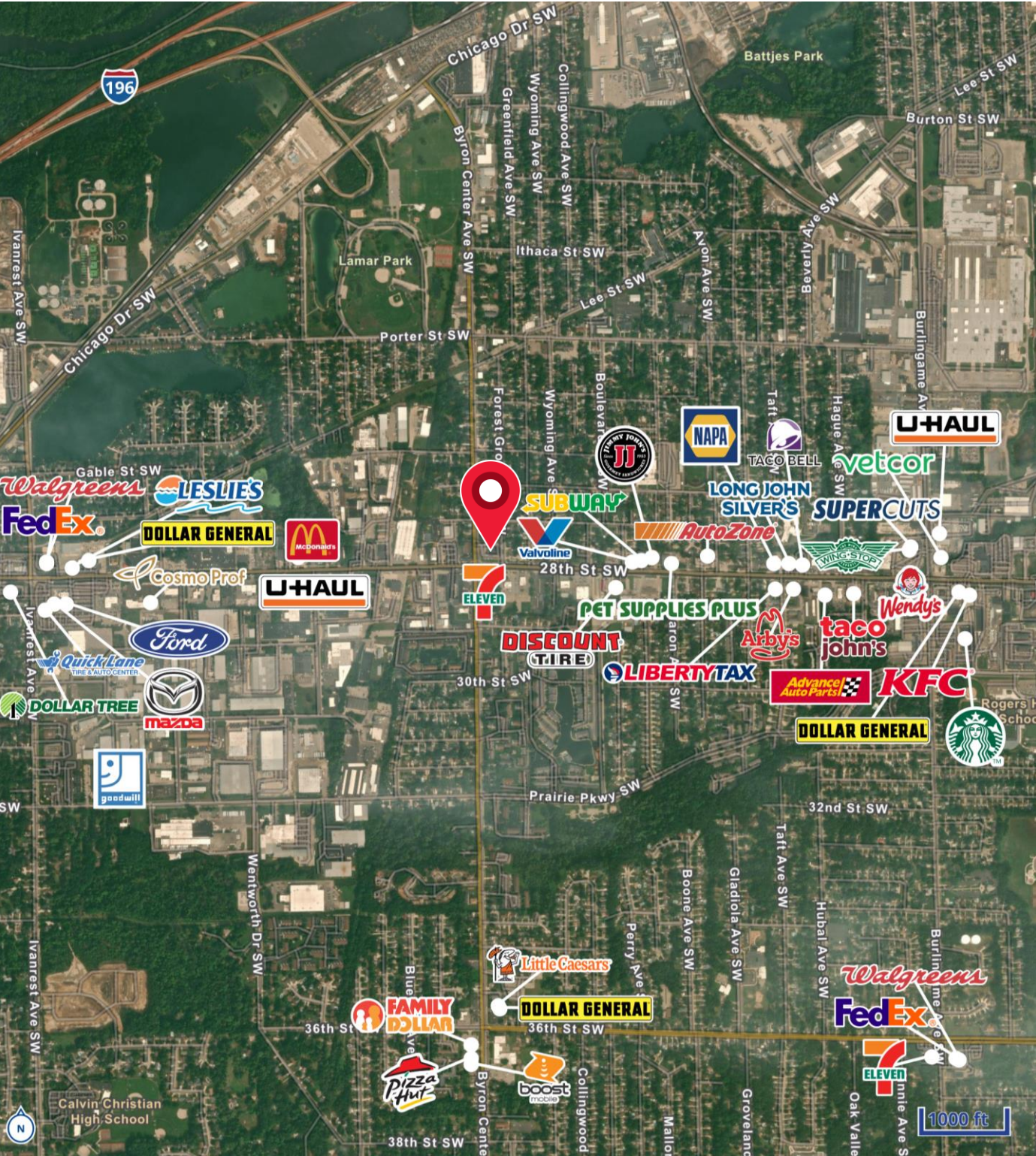
- Former CVS built in 2003
- Traffic Counts: 28,300 on 28th St
7,200 on Byron Center
- Zoning: B-2 General Business
- Pylon Sign and Drive Through Window
- 52 Parking Spaces

Aerial Map

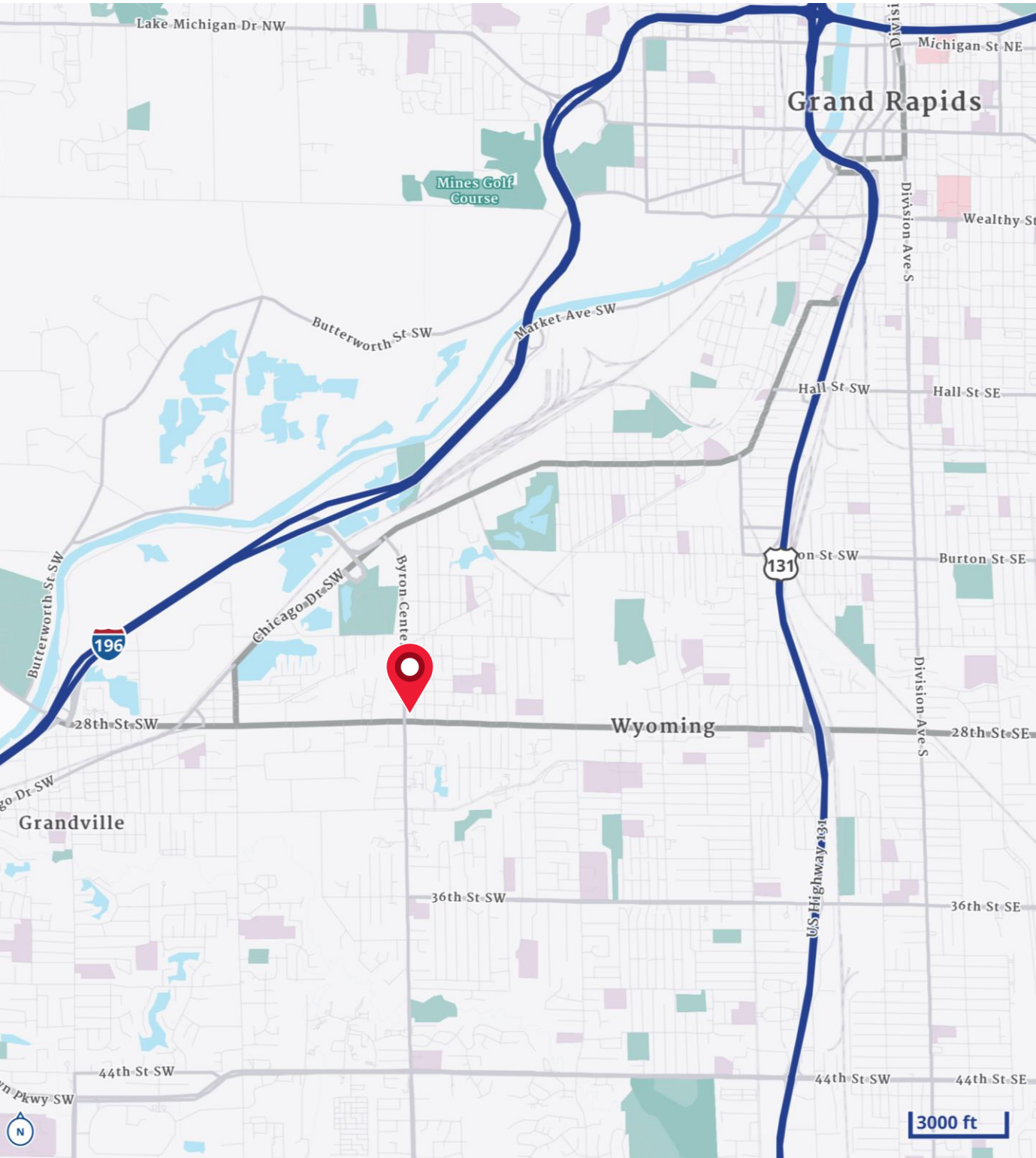


[illegible]

Merchant Map



Location Map



Demographics

CURRENT YEAR SUMMARY	1 MILE RADIUS	3 MILE RADIUS	5 MILE RADIUS
Total Population	13,468	82,193	222,251
Total Households	5,618	30,539	86,611
Total Family Households	3,146	19,409	50,820
Average Household Size	2.37	2.67	2.54
Median Age	34.2	34.1	33.9
Population Age 25+	9,050	53,980	147,856
2010 – 2021 Population: Annual Growth Rate (CAGR)	0.41%	0.48%	0.70%
2022 – 2023 Population: Annual Growth Rate (CAGR)	0.31%	0.28%	0.53%
5 YEAR PROJECTED TRENDS: ANNUAL RATE			
Population	0.13%	0.25%	0.29%
Households	0.39%	0.52%	0.58%
Families	0.15%	0.35%	0.35%
Median Household Income	3.10%	3.16%	2.96%
CURRENT YEAR POPULATION BY SEX			
Male Population / % Male	6,618 / 49.1%	41,102 / 50.0%	110,560 / 49.8%
Female Population / % Female	6,850 / 50.9%	41,091 / 50.0%	111,691 / 50.3%
INCOME & HOUSEHOLDS SUMMARY			
2020 Median Household Income	\$59,066	\$67,210	\$67,450
Average Household Income	\$71,259	\$83,934	\$86,547
Per Capita Income	\$29,589	\$31,146	\$33,738
SUMMARY BUSINESS DATA			
Total Businesses	506	2,683	8,893
Total Daytime Population	12,824	77,784	249,017
Daytime Population: Workers	6,608	39,759	144,764
Daytime Population: Residents	6,216	38,025	104,253

Data Notes:

- Household population includes persons not residing in group quarters. Average Household Size is the household population divided by total households. Persons in families include the householder and persons related to the householder by birth, marriage, or adoption.
- Income represents the preceding year, expressed in current dollars. Household income includes wage and salary earnings, interest dividends, net rents, pensions, SSI and welfare payments, child support, and alimony.
- Per Capita Income represents the income received by all persons aged 15 years and over divided by the total population.



Lou Frango
248 226 1678
lou.frango@colliers.com



Shawn O'Brien
517 662 3529
shawn.obrien@colliers.com