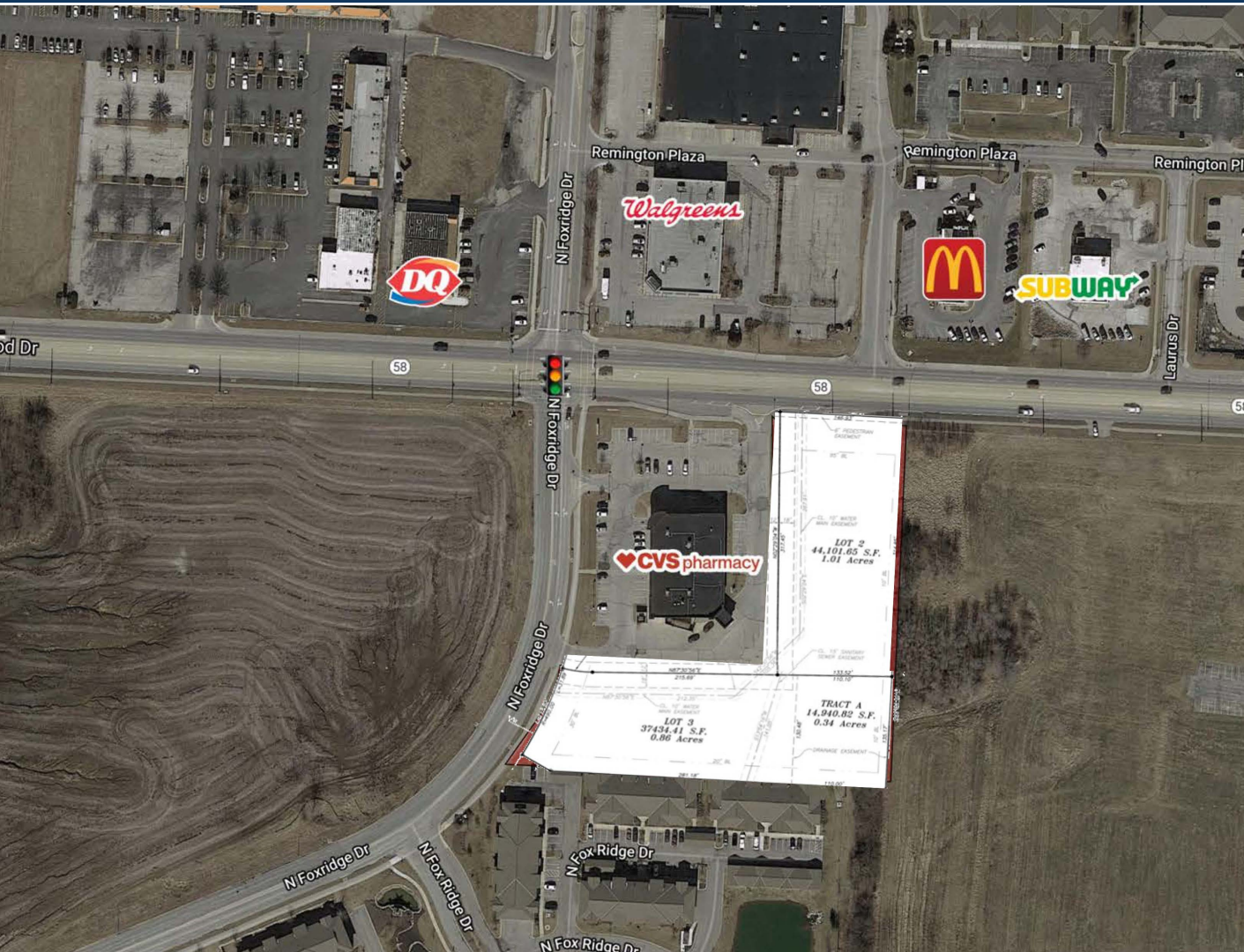


FOR SALE

2.48 ACRES OF LAND

MO STATE HWY 58 & FOXRIDGE DRIVE | RAYMORE, MO



Property Highlights:

- Property can be broken into two parcels of 1.11 acres of 58 Highway frontage and 1.30 acres behind CVS drugstore
- Front 1.11 acre priced at \$500,000
- Secondary 1.30 acre parcel priced at \$400,000

Demographics			
Radius	Population	Daytime Population	Median Household Income
1 Mile	8,460	2,221	\$90,524
3 Miles	34,599	8,327	\$80,726
5 Miles	68,420	14,902	\$79,271



Frank Newman Commercial Real Estate, Inc.
116 West 47th Street, Suite 212
Kansas City, Missouri 64112
816.531.1050 | www.franknewmancommercial.com

Frank Newman
o 816.531.1050
m 913.340.5757
frank@franknewmancommercial.com



2.48 ACRES OF LAND



SEAL:

THIS DOCUMENT IS
RELEASED FOR THE
PURPOSE OF CVR REVIEW
UNDER THE AUTHORITY OF
ALAN D. MICHELS, P.E.

IT IS NOT TO BE USED FOR
CONSTRUCTION, BIDDING
OR PERMIT PURPOSES.

CVS/
pharmacy
NORTHERN-12,900-RIGHT
STORE NUMBER: 8595
MO. STATE ROUTE 58
&
NORTH FOX RIDGE DRIVE
RAYMOND, MISSOURI



CEDARWOOD
DEVELOPMENT, INC.

1765 Meridian Road
Akron, Ohio 44313

TEL 330.836.9971
FAX 330.836.4591

REVISIONS:

DRAWN BY: MPA
CHECKED BY: ADM
DATE: SEPTEMBER 25, 2007
JOB NUMBER: 0607008
TITLE:
**CONCEPTUAL
SITE PLAN**
SHEET NUMBER:
SP-1
COMMENTS:
NOT RELEASED FOR CONSTRUCTION

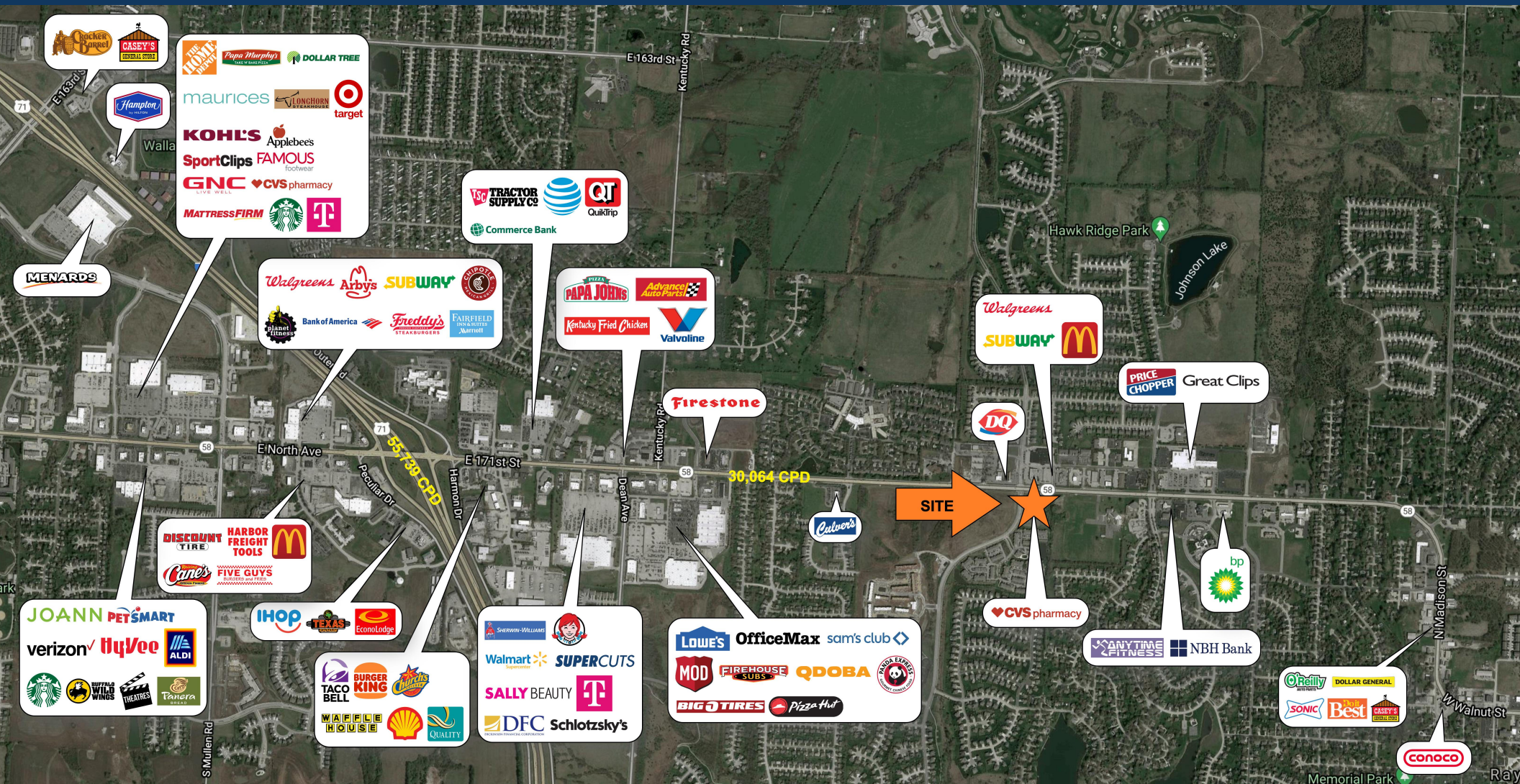


Frank Newman
o 816.531.1050
m 913.340.5757
frank@franknewmancommercial.com

FOR SALE

2.48 ACRES OF LAND

MO STATE HWY 58 & FOXRIDGE DRIVE | RAYMORE, MO



Frank Newman Commercial Real Estate, Inc.
 116 West 47th Street, Suite 212
 Kansas City, Missouri 64112
 816.531.1050 | www.franknewmancommercial.com

Frank Newman
 o 816.531.1050
 m 913.340.5757
frank@franknewmancommercial.com

