

601 Mission Street

CORNER OF MISSION STREET & 2ND STREET

RETAIL FOR SUBLEASE

SOMA DISTRICT



Kazuko Morgan

Executive Vice Chairman | Lic. 01070005
kazuko.morgan@cushwake.com
+1 415 773 3546

Heather Trimble

Senior Associate | Lic. 02041605
heather.trimble@cushwake.com
+1 415 299 6683



AREA OVERVIEW

Nestled between Mission Street & 2nd Street in the SoMa District, **601 Mission Street** offers a great retail opportunity surrounded by many world-class hotels, shopping, dining and businesses.

The SoMa District daytime population reaches **136,565 visitors** daily and the fastest growing residential district in San Francisco, and holds more than **5,270 hotel rooms** within walking distance of 90 New Montgomery Street. The surrounding financial buildings bring lots of working professionals and visitors to the neighborhood daily, benefiting the space with lots of profitable traffic.

In proximity to Moscone Center, Yerba Buena Gardens, the SF MoMa, W Hotel, Palace Hotel, St. Regis Hotel and Montgomery BART/MUNI Station.



**HIGH TRAFFIC
& VISIBILITY**



**ICONIC
LOCATION**

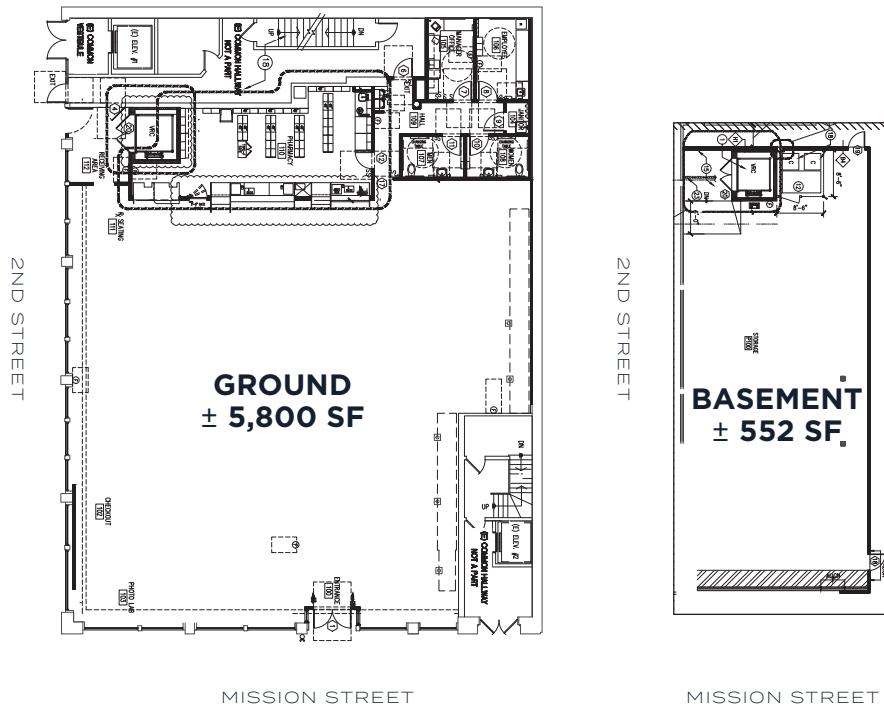


**SURROUNDED BY
RENOUNED CHEF
RESTAURANTS**

PREMISES

HIGHLIGHTS | ± 6,352 RSF

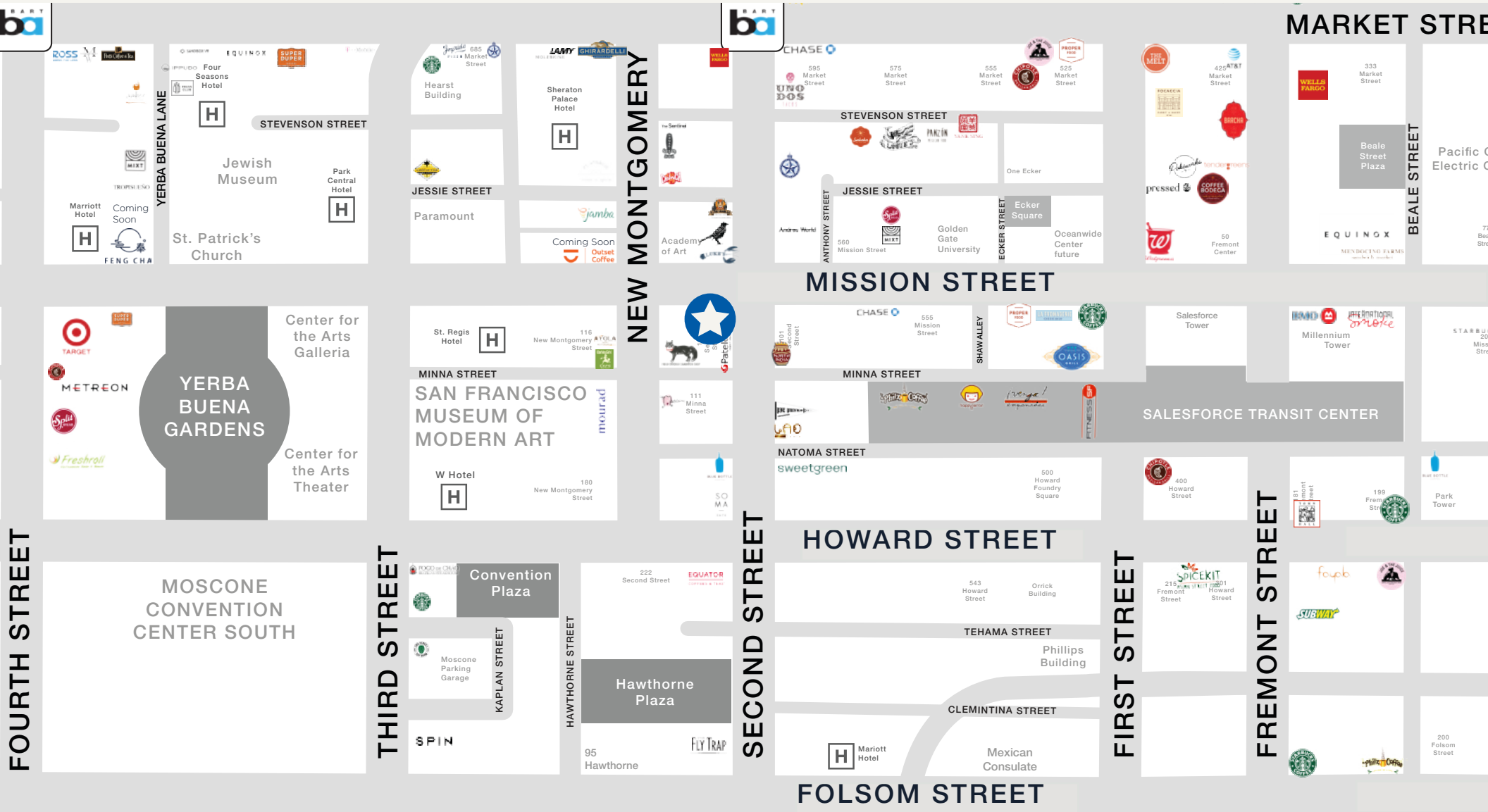
- + Available Now
- + Prime corner location
- + Heavy pedestrian & vehicular traffic
- + Close proximity to transportation hubs
- + Neighboring retailers include: Luke's Lobster, Starbucks, The Bird , Sushiritto, Academy of Art University, Moscone Center, SF MoMa, the W Hotel, and the Palace Hotel



LOCATION

— 4 —

★ 601 MISSION STREET



601 Mission Street



CORNER OF MISSION STREET & 2ND STREET



Kazuko Morgan

Executive Vice Chairman | Lic. 01070005

kazuko.morgan@cushwake.com

+1 415 773 3546

Heather Trimble

Senior Associate | Lic. 02041605

heather.trimble@cushwake.com

+1 415 299 6683