

500 Pine Street

AT THE CORNER OF KEARNY & PINE STREETS

RETAIL FOR SUBLEASE

NORTH FINANCIAL DISTRICT



Kazuko Morgan

Executive Vice Chairman | Lic. 01070005
kazuko.morgan@cushwake.com
+1 415 773 3546

Heather Trimble

Director | Lic. 02041605
heather.trimble@cushwake.com
+1 415 485 3779

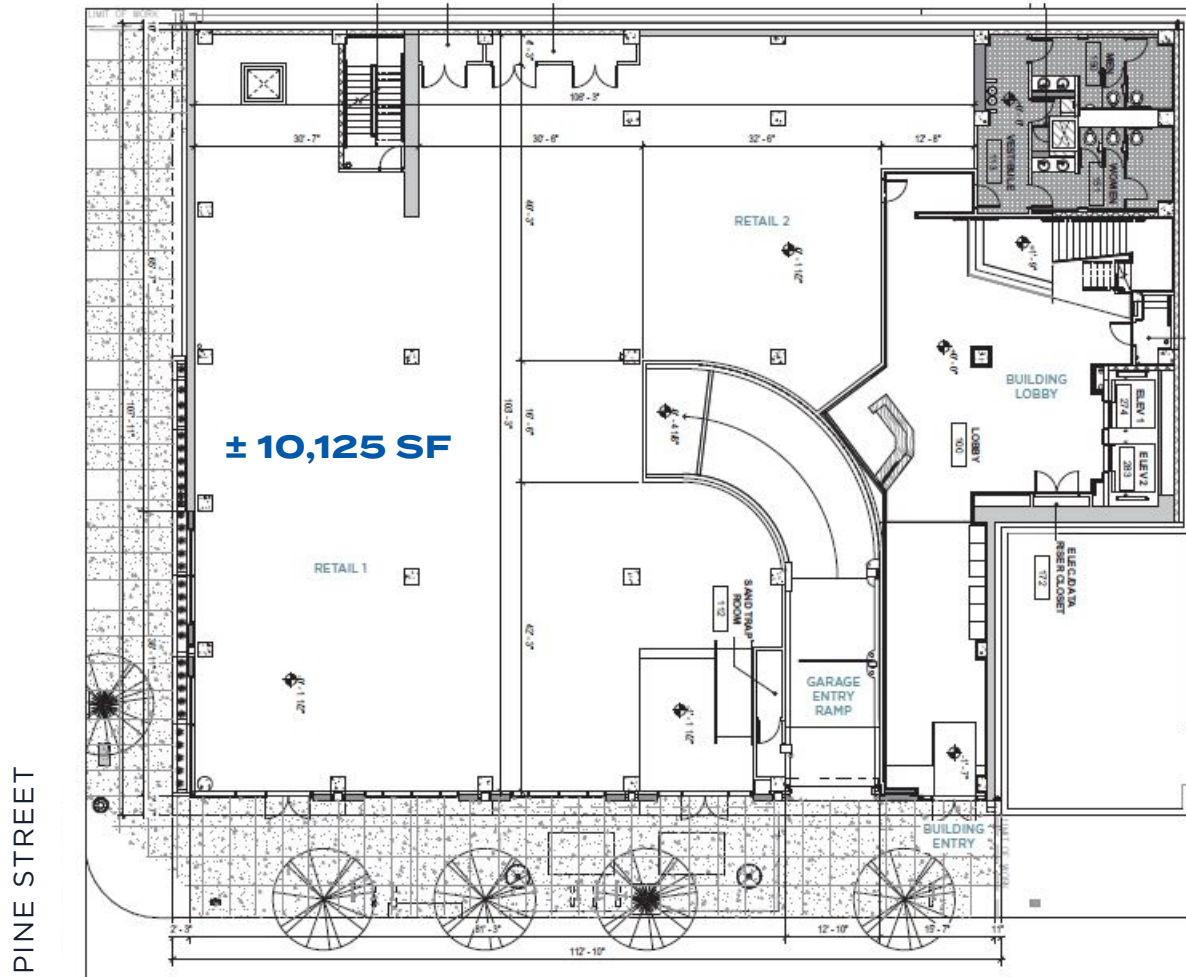


PREMISES

500 PINE STREET

HIGHLIGHTS

- + Sublease through January 31, 2031
- + Wraparound frontage featuring 82.5' on Kearny Street and 86' on Pine Street
- + Ceiling heights $\pm 13'3''$
- + Neighboring tenants include: Bay Club FiDi, Insomnia Cookies, Coffee Bar, Starbucks, The Vault Garden, ICA SF, Walgreens, Bank of America
- + Neighboring offices include: Blend, Microsoft, McKinsey & Co., Bonhams, Tubi, Spotify, WeWork, Atlassian, Twitch

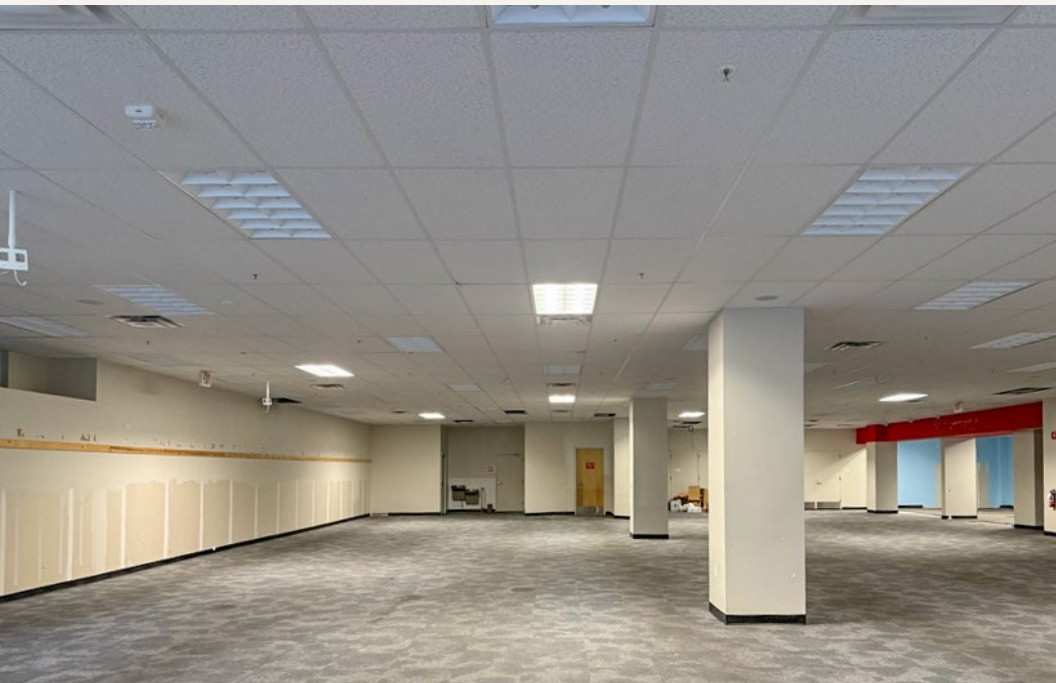


PINE STREET

KEARNY STREET



INTERIOR



LOCATION

★ 500 PINE STREET

In the heart of San Francisco's workforce, 500 Pine Street offers a great retail opportunity surrounded by many world-class hotels, shopping, dining and businesses. The property is located at the corner of Kearny Street and Pine Street - and is in close proximity to multiple offices including 555 California Street Building which employs about a total of **7,863 people**.

The Financial District daytime population reaches **153,245 visitors daily** and houses more than **700 residential homes**, and holds more than **1,300 hotel rooms** within walking distance of 500 Pine Street. The surrounding attractions bring lots of tourists and working professionals to the neighborhood daily, benefiting 500 Pine Street with lots of profitable traffic.

IN CLOSE PROXIMITY:

Chinatown and North Beach districts, Transamerica Pyramid, 555 California Street Building, Coffee Bar, Bay Club FiDi, The Vault Garden, Walgreens, ICA SF.



500 Pine Street

AT THE CORNER OF KEARNY & PINE STREETS



Kazuko Morgan

Executive Vice Chairman | Lic. 01070005

kazuko.morgan@cushwake.com

+1 415 773 3546

Heather Trimble

Director | Lic. 02041605

heather.trimble@cushwake.com

+1 415 485 3779