

Former CVS Building

5000 N Claiborne New Orleans, LA 70117

EXECUTIVE SUMMARY



Offering Summary

Sale Price:	Subject To Offer
Building Size:	13,225 SF
Parking Spaces:	58
Lot Size:	1.18 Acres
Price / SF:	-
Year Built:	2016
Zoning:	C-1 - General Commercial District

Property Highlights

- Former pharmacy building available
- Newly constructed, well maintained building
- Nearby traffic counts of 30,000 VPD

Matthew Pittman, CCIM

504.322.1275
mpittman@beaubox.com

Beau Box

225.931.3200
bbox@beaubox.com

Broker of Record, Beau J. Box; Licensed by the Louisiana Real Estate Commission, Mississippi Real Estate Commission, Alabama Real Estate Commission and Florida Real Estate Commission, USA. This information has been secured from sources we believe to be reliable, but we make no representations or warranties, expressed or implied, as to the accuracy of the information. References to square footage or age are approximate. Buyer must verify the information and bears all risk for any inaccuracies. © Beau Box Commercial Real Estate. | January 27, 2022



Former CVS Building

5000 N Claiborne New Orleans, LA 70117

ADDITIONAL PHOTOS



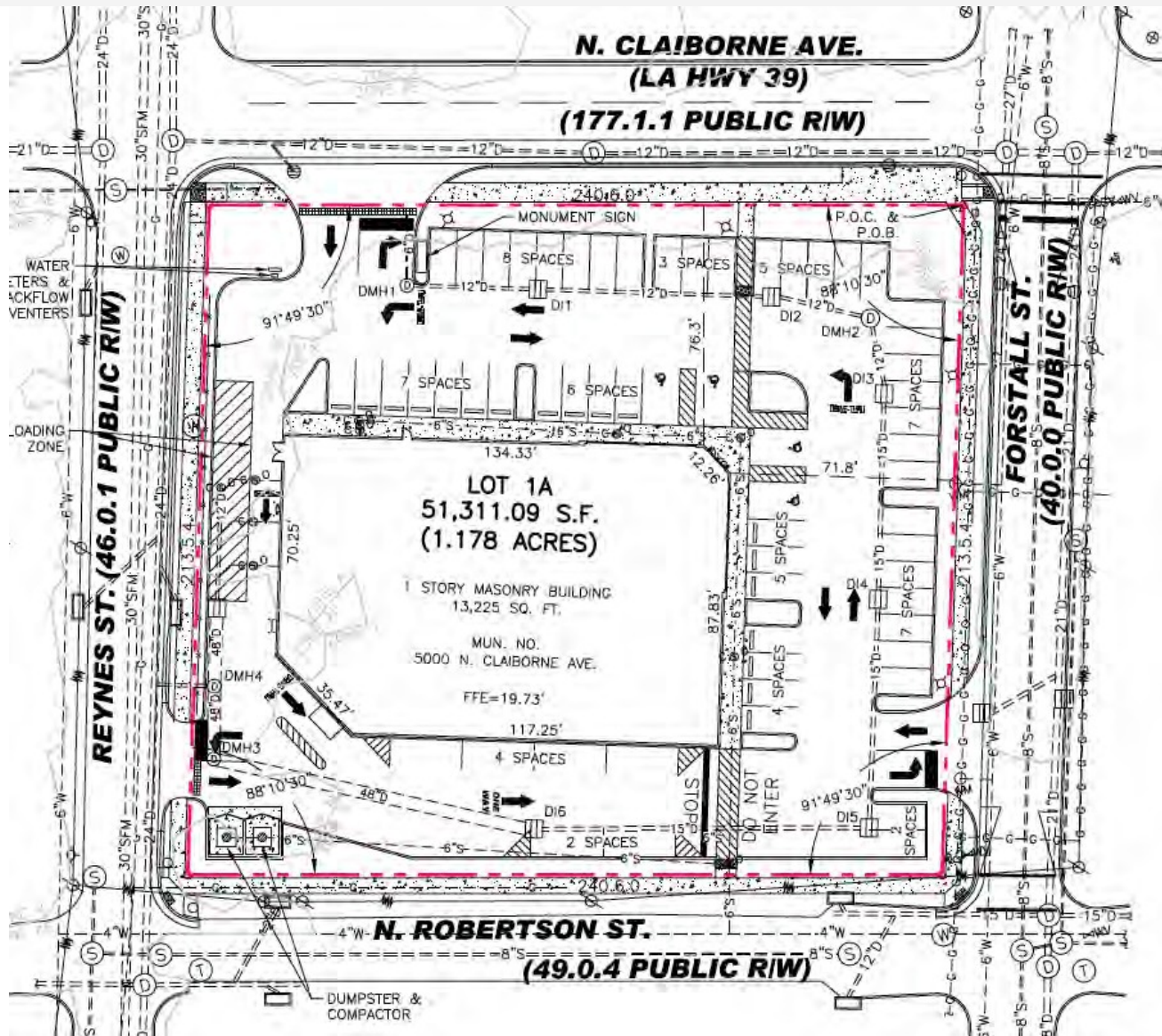
Matthew Pittman, CCIM **Beau Box**
504.322.1275 225.931.3200
mpittman@beaubox.com bbox@beaubox.com

Broker of Record, Beau J. Box; Licensed by the Louisiana Real Estate Commission, Mississippi Real Estate Commission, Alabama Real Estate Commission and Florida Real Estate Commission, USA. This information has been secured from sources we believe to be reliable, but we make no representations or warranties, expressed or implied, as to the accuracy of the information. References to square footage or age are approximate. Buyer must verify the information and bears all risk for any inaccuracies. © Beau Box Commercial Real Estate. | January 27, 2022



Former CVS Building
5000 N Claiborne New Orleans, LA 70117

SURVEY



Matthew Pittman, CCIM
504.322.1275
mpittman@beaubox.com

Beau Box
225.931.3200
bbox@beaubox.com

Broker of Record, Beau J. Box; Licensed by the Louisiana Real Estate Commission, Mississippi Real Estate Commission, Alabama Real Estate Commission and Florida Real Estate Commission, USA. This information has been secured from sources we believe to be reliable, but we make no representations or warranties, expressed or implied, as to the accuracy of the information. References to square footage or age are approximate. Buyer must verify the information and bears all risk for any inaccuracies. © Beau Box Commercial Real Estate. | January 27, 2022



Former CVS Building
5000 N Claiborne New Orleans, LA 70117

LOCATION MAP



Matthew Pittman, CCIM
504.322.1275
mpittman@beaibox.com

Beau Box
225.931.3200
bbox@beaibox.com

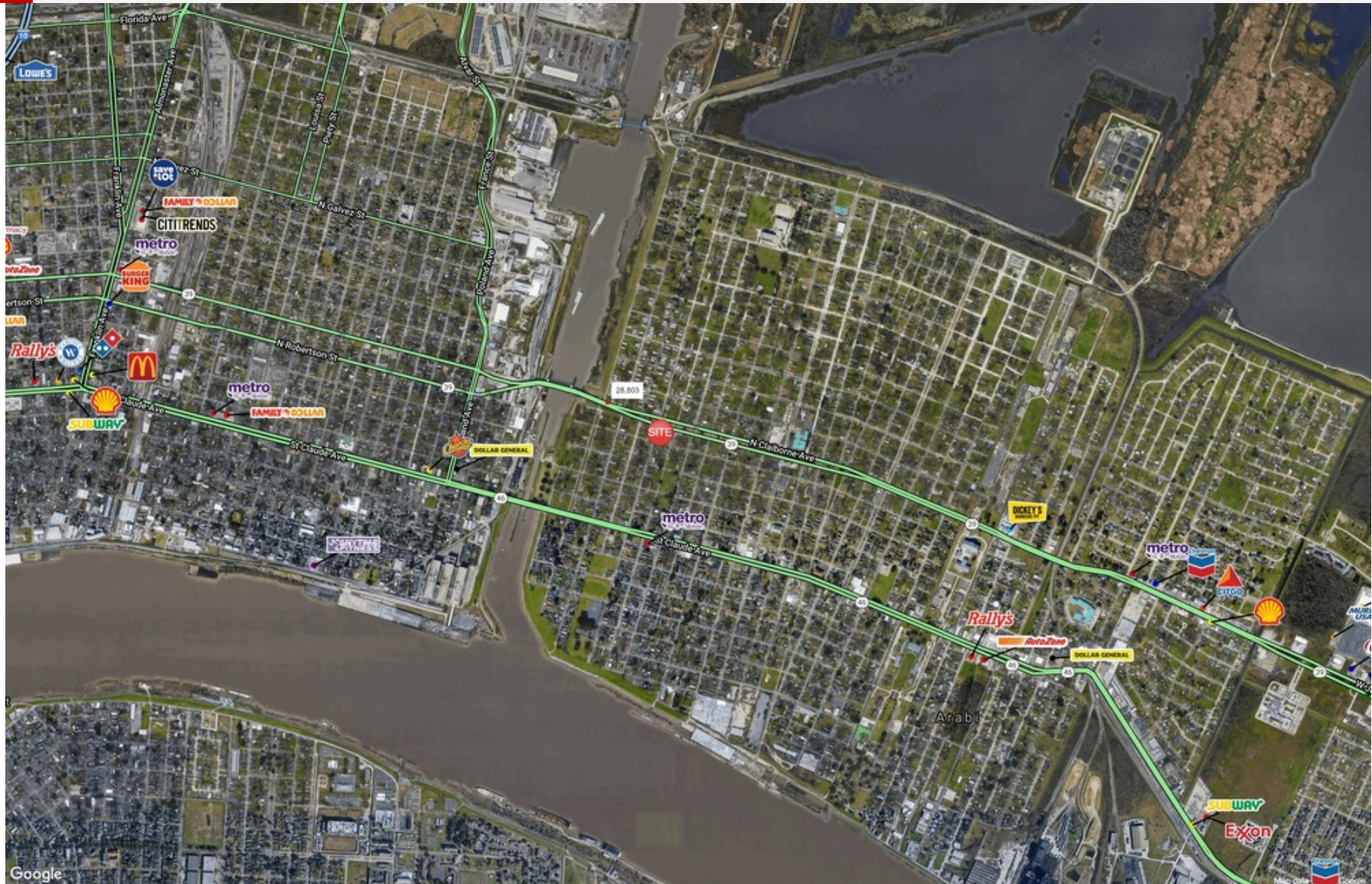
Broker of Record, Beau J. Box; Licensed by the Louisiana Real Estate Commission, Mississippi Real Estate Commission, Alabama Real Estate Commission and Florida Real Estate Commission, USA. This information has been secured from sources we believe to be reliable, but we make no representations or warranties, expressed or implied, as to the accuracy of the information. References to square footage or age are approximate. Buyer must verify the information and bears all risk for any inaccuracies. © Beau Box Commercial Real Estate. | January 27, 2022



Former CVS Building

5000 N Claiborne New Orleans, LA 70117

AERIAL



Matthew Pittman, CCIM

504.322.1275

mpittman@beaubox.com

Beau Box

225.931.3200

bbox@beaubox.com

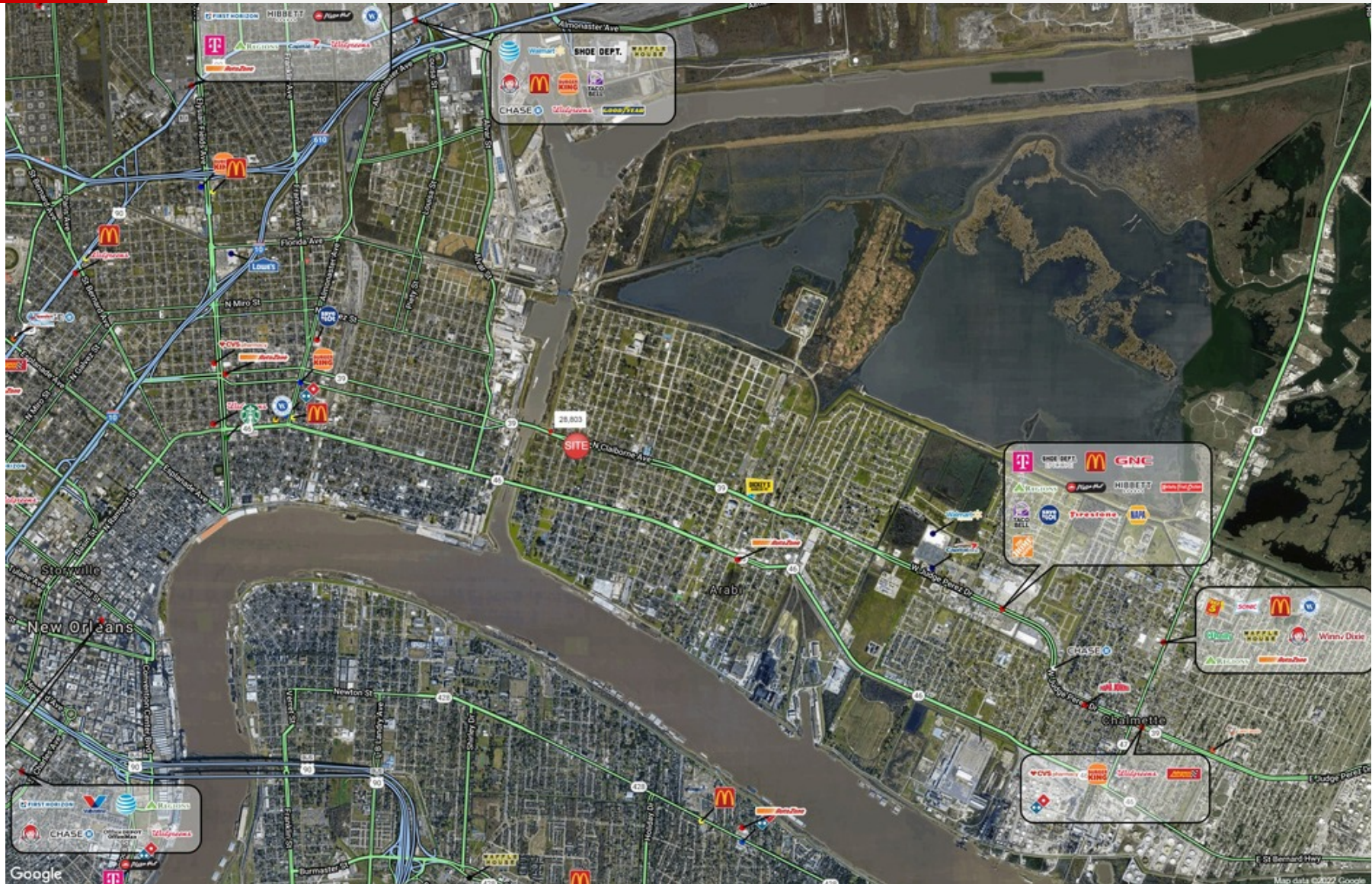
Broker of Record, Beau J. Box; Licensed by the Louisiana Real Estate Commission, Mississippi Real Estate Commission, Alabama Real Estate Commission and Florida Real Estate Commission, USA. This information has been secured from sources we believe to be reliable, but we make no representations or warranties, expressed or implied, as to the accuracy of the information. References to square footage or age are approximate. Buyer must verify the information and bears all risk for any inaccuracies. © Beau Box Commercial Real Estate. | January 27, 2022



Former CVS Building

5000 N Claiborne New Orleans, LA 70117

MACRO AERIAL



Matthew Pittman, CCIM
504.322.1275
mpittman@beaubox.com

Beau Box
225.931.3200
bbox@beaubox.com

Broker of Record, Beau J. Box; Licensed by the Louisiana Real Estate Commission, Mississippi Real Estate Commission, Alabama Real Estate Commission and Florida Real Estate Commission, USA. This information has been secured from sources we believe to be reliable, but we make no representations or warranties, expressed or implied, as to the accuracy of the information. References to square footage or age are approximate. Buyer must verify the information and bears all risk for any inaccuracies. © Beau Box Commercial Real Estate. | January 27, 2022

