

RETAIL SUBLEASE AVAILABLE

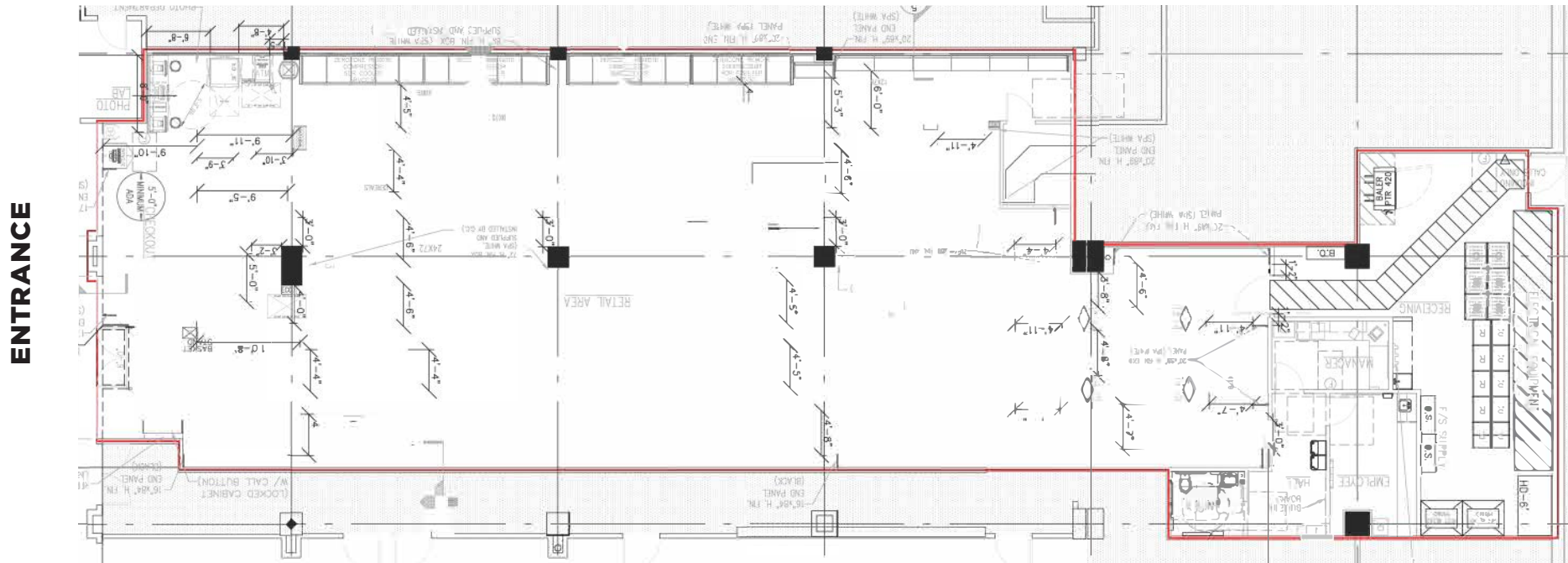
429 L'ENFANT PLAZA SW WASHINGTON, DC 20024

6,054 SF | TERM THROUGH 06/07/2026 | AVAILABLE IMMEDIATELY



429 L'ENFANT PLAZA SW

6,054 SF | TERM THROUGH 06/07/2026 | AVAILABLE IMMEDIATELY



FOR MORE INFORMATION, CONTACT:

Ned Goodwin

202-266-1169 | ned.goodwin@cushwake.com

Gwen Dominguez

301-634-2383 | gwen.fraker@cushwake.com

Scarlett Cunningham

202-495-7052 | scarlett.cunningham@cushwake.com