



FOR SUBLEASE

36567 Goddard Road Romulus, MI

Former CVS Available

Property Highlights

- Former CVS Built in 2000
- 12,566 SF (90' by 141')
- Zoning: CBD-2, Downtown

CONTACT US



Lou Frango

248 226 1678

lou.frango@colliers.com

Colliers Detroit

400 W 4th Street, Suite 350

Royal Oak, MI 48067

colliers.com/detroit



FORMER CVS FOR SUBLEASE

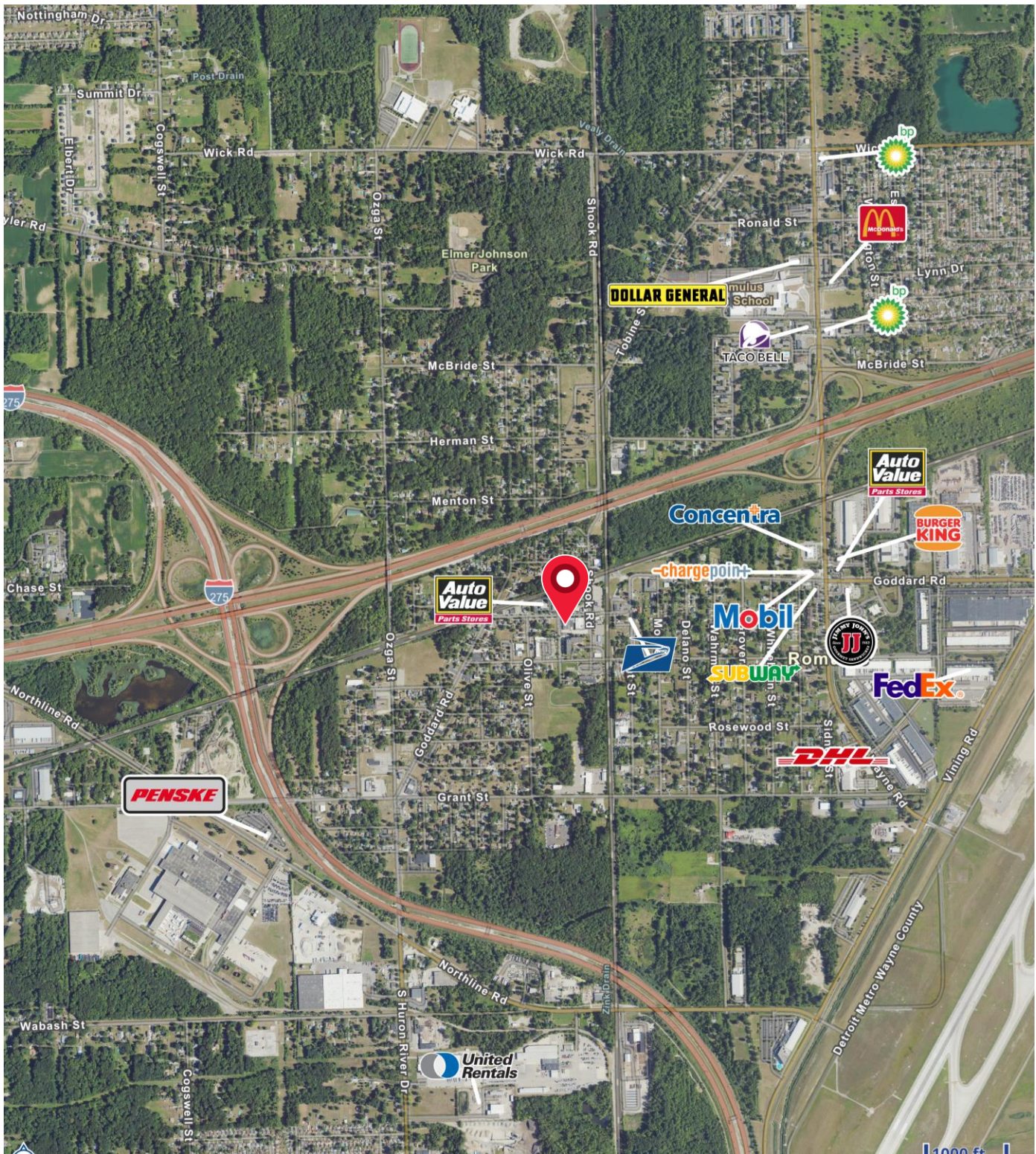
Colliers

Property Aerial

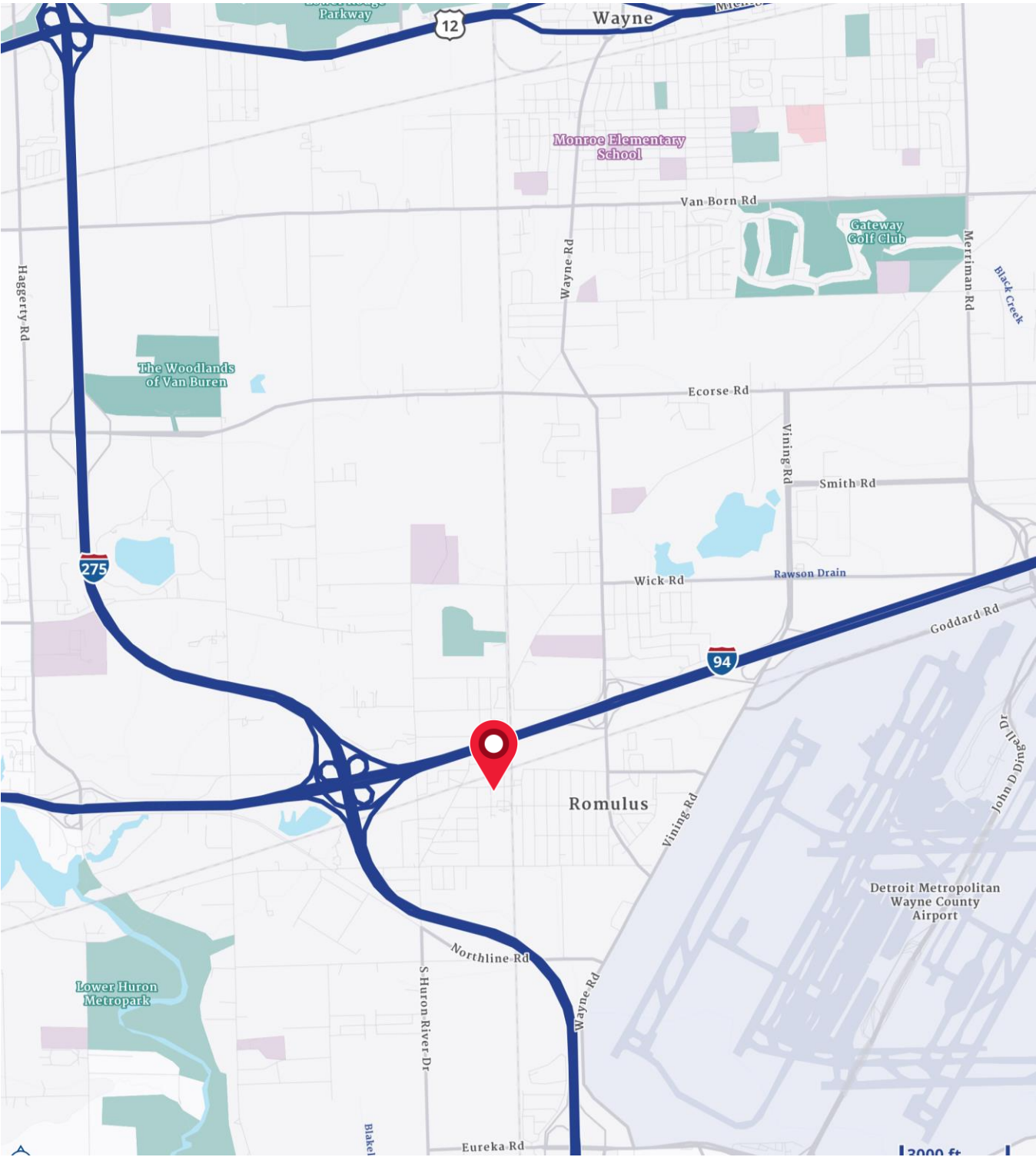


Architectural floor plan of a retail store layout. The plan shows various departments including a Pharmacy, Manager's Office, Consultation Room, RX Waiting, Blood Pressure Machine, Retail Area, and American Orientations. It includes detailed dimensions for room sizes, door openings, and window heights. Key features include a Reception Area, Unisex Toilet, Mop Sink, Keypar, Roof Drain, and a Storage Area. The plan is divided into sections by grid lines 1-7 and A-C. Specific notes include "SILL HEIGHT: 4'-0" OPENING TO SOFFIT" and "SILL HEIGHT: 7'-1 1/2" BOCC: 7'-2 1/2".

Merchant Map



Location Map



Demographics

CURRENT YEAR SUMMARY	1 MILE RADIUS	3 MILE RADIUS	5 MILE RADIUS
Total Population	2,837	18,263	78,885
Total Households	1,279	7,540	33,143
Total Family Households	642	4,631	20,138
Average Household Size	2.20	2.40	2.36
Median Age	43.3	39.3	39.4
Population Age 25+	2,095	12,965	55,766
2010 – 2020 Population: Annual Growth Rate (CAGR)	-0.29%	0.63%	0.42%
2020 – 2023 Population: Annual Growth Rate (CAGR)	-0.03%	-0.07%	-0.53%
5 YEAR PROJECTED TRENDS: ANNUAL RATE			
Population	-0.25%	-0.21%	-0.37%
Households	-0.09%	0.08%	-0.04%
Families	-0.31%	-0.10%	-0.22%
Median Household Income	1.17%	1.84%	2.35%
CURRENT YEAR POPULATION BY SEX			
Male Population / % Male	1,385 / 48.8%	8,825 / 48.3%	38,571 / 48.9%
Female Population / % Female	1,452 / 51.2%	9,438 / 51.7%	40,314 / 51.1%
INCOME & HOUSEHOLDS SUMMARY			
Median Household Income	\$53,556	\$67,266	\$68,248
Average Household Income	\$66,916	\$81,809	\$88,337
Per Capita Income	\$30,171	\$33,717	\$37,050
SUMMARY BUSINESS DATA			
Total Businesses	220	647	2,566
Total Daytime Population	4,992	28,730	93,953
Daytime Population: Workers	3,410	19,893	53,089
Daytime Population: Residents	1,582	8,837	40,864

Data Notes:

- Household population includes persons not residing in group quarters. Average Household Size is the household population divided by total households. Persons in families include the householder and persons related to the householder by birth, marriage, or adoption.
- Income represents the preceding year, expressed in current dollars. Household income includes wage and salary earnings, interest dividends, net rents, pensions, SSI and welfare payments, child support, and alimony.
- Per Capita Income represents the income received by all persons aged 15 years and over divided by the total population.



Lou Frango
248 226 1678
lou.frango@colliers.com