

The Right Places, The Right Spaces

SL

STRATEGIC



1031-1041 W. Addison St.

Chicago, IL

Sublease Next to Wrigley Field



The Heart of Wrigleyville



Address

1031-1041 W. Addison St.

Chicago, IL 60613

Availability

10,200 SF on two floors

- High foot-traffic opportunity across the street from Wrigley Field, home of the Chicago Cubs with 2.9 million visitors in 2024
- In the heart of Wrigleyville, one of Chicago's most vibrant neighborhoods
- At the intersection of N Clark Street and W Addison St.
- W Addison St. 12,100 VPD
- N Clark St. 13,200 VPD



Property Details

Address

1031 - 1041 West Addison
Street
Chicago, IL 60613

Availability

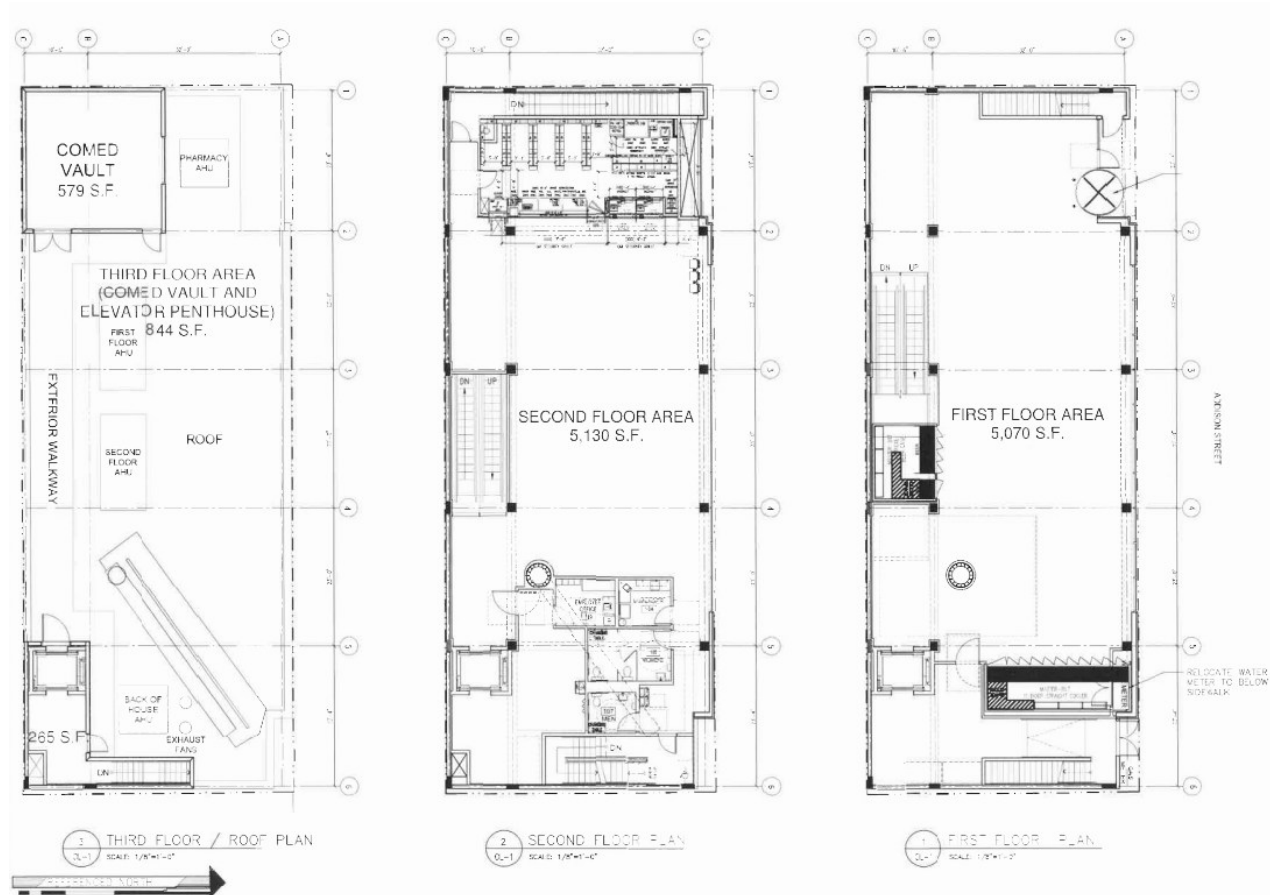
10,200 SF
Two Floors

Lease

Sub-lease through
01/21/2037

NNN

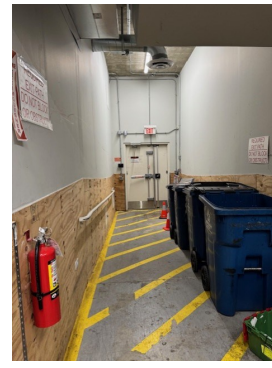
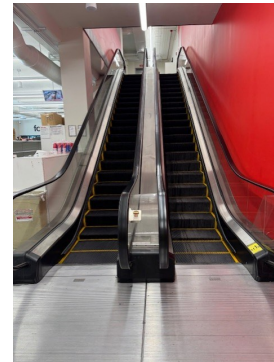
Call for Rate



Full site plan available at www.strategic-locations.com/1031waddisoncom



Site Visuals





Demographics

<u>Demographics</u>	<u>3 Miles</u>	<u>5 Miles</u>	<u>7 Miles</u>
Population:	446,883	1 Mil	1.5 Mil
Households:	213,754	462,006	645,121
Average HH Income:	\$130,244	\$118,669	\$109,671

Wrigley Stadium

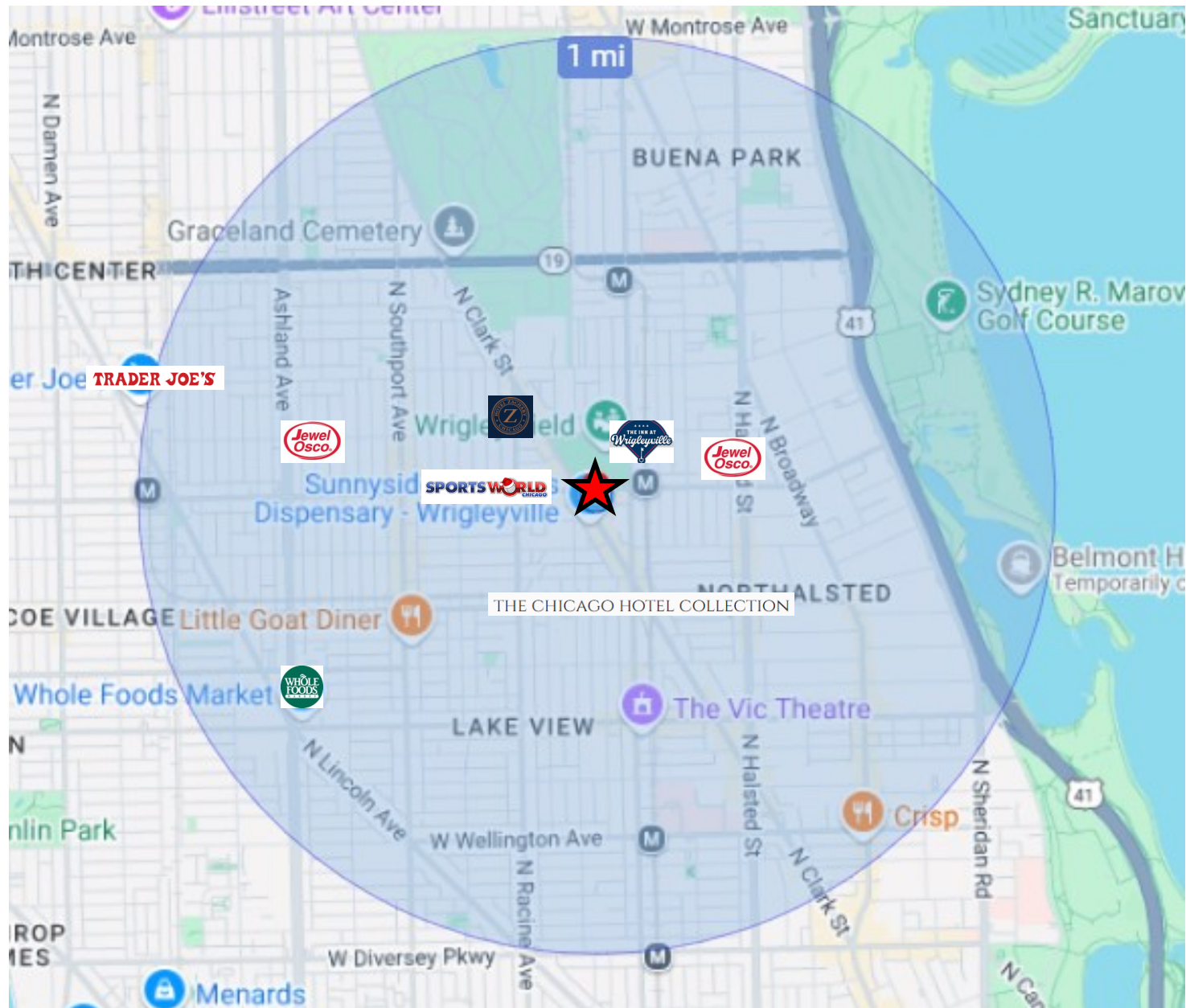
Visitors: 2.9 million in 2023

Average 35,922 per game

Out of Town Visitors: 1.5 million in 2023



What's Nearby: 1-Mile Radius





Presented by

Abbell Associates, LLC

30 N. LaSalle Street, Suite 2120, Chicago, Illinois 60602

www.abbell.com

Tom Walsh

Partner/Managing Broker

tom@abbell.com

(847)-421-4882

Joe Sauer

President of Retail

joe@abbell.com

(312) 961-8748

The Right Places, The Right Spaces

Marketing Services by

www.strategic-locations.com



© 2025 Strategic Locations. All rights reserved. Strategic Locations provides market analysis, creative services, and tour packages to retailers and brokers nationwide. This information has been obtained from sources believed reliable but has not been verified for accuracy or completeness. You should conduct a careful, independent investigation of the property and verify all information. Any reliance on this information is solely at your own risk. All other marks displayed on this document are the property of their respective owners, and the use of such logos does not imply any affiliation with or endorsement. Photos are the property of their respective owners.