

FOR LEASE > VACANT LAND

# 2.75 ACRES AVAILABLE

1501-1539 PROSPECT ROAD | SUPERIOR TOWNSHIP, MICHIGAN



## NWC OF PROSPECT AND CLARK

### > PROPERTY HIGHLIGHTS

- Signalized Intersection
- Traffic Counts of 7,500 on N. Prospect Road & 7,000 on E. Clark Road
- Zoned: Planned Community District

DEMOGRAPHICS	Category	1 Mile	3 Mile	5 Mile
	Population	8,948	57,378	112,686
	Average Income	\$62,951	\$52,291	\$66,126
	Households	3,608	24,373	48,102

**COLLIERS INTERNATIONAL**  
 2 Corporate Drive | Suite 300  
 Southfield, Michigan 48076

For More Information Call:

**LOU FRANGO**

PHONE 248 540 1000 EXT 1678

EMAIL [lou.frango@colliers.com](mailto:lou.frango@colliers.com)



[colliers.com/detroit](http://colliers.com/detroit)



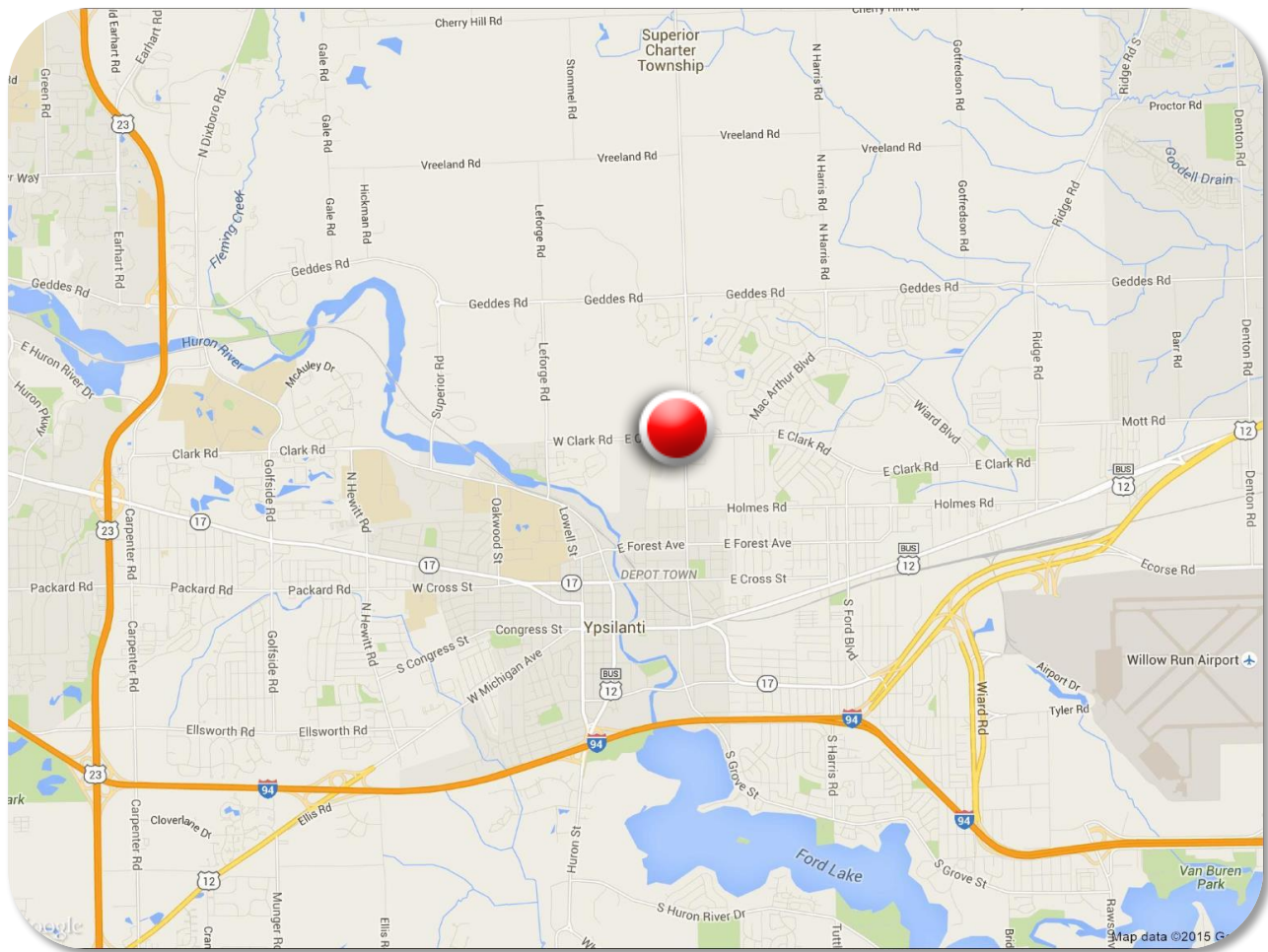
FOR LEASE > VACANT LAND

# 2.75 ACRES AVAILABLE

1501-1539 PROSPECT ROAD | SUPERIOR TOWNSHIP, MICHIGAN



## > LOCATION MAP



**LOU FRANGO**  
PHONE 248 540 1000 EXT 1678  
EMAIL [lou.frango@colliers.com](mailto:lou.frango@colliers.com)



**COLLIERS INTERNATIONAL**  
2 Corporate Dr. | Suite 300  
Southfield, Michigan 48076

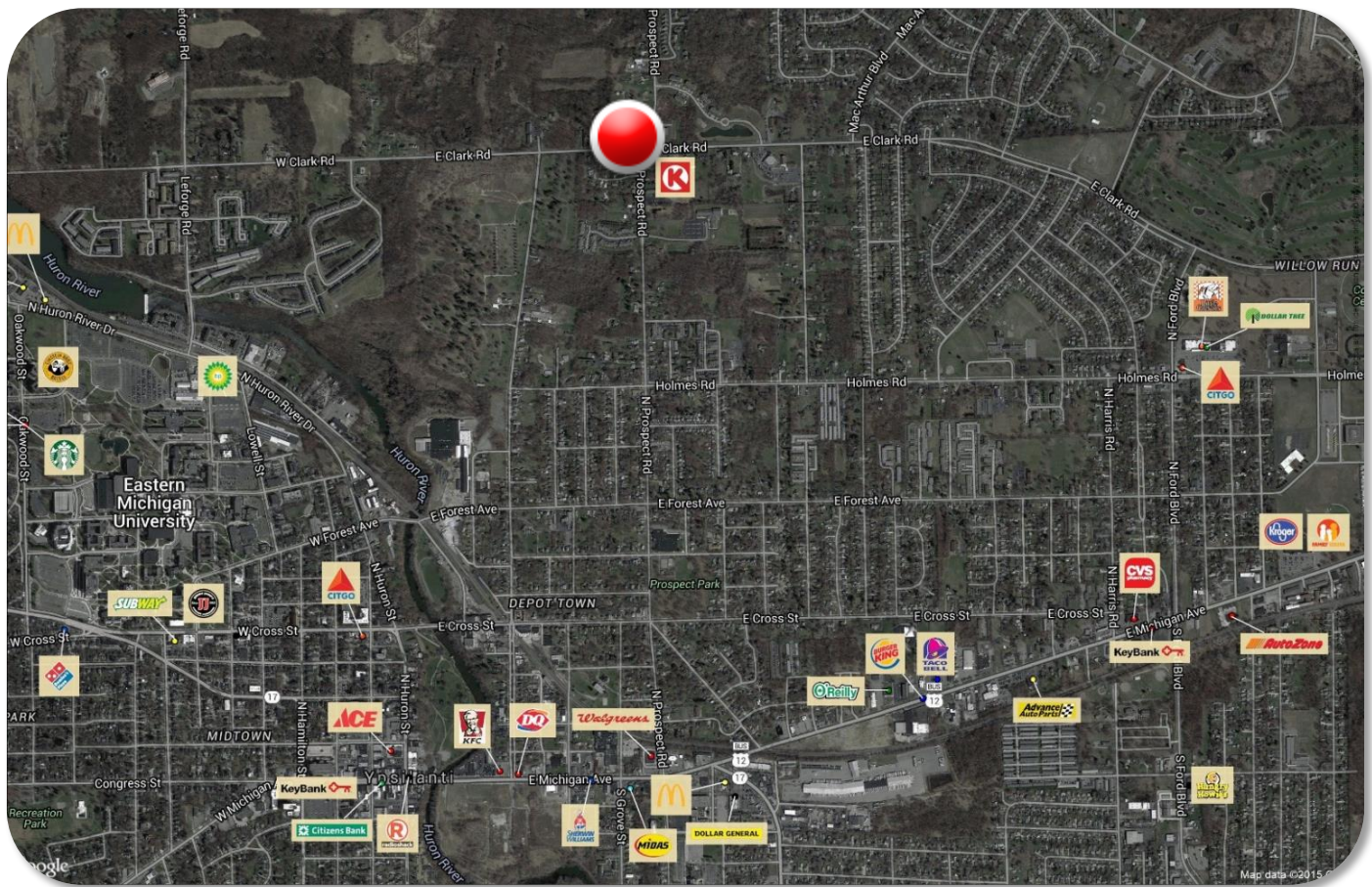
FOR LEASE > VACANT LAND

# 2.75 ACRES AVAILABLE

1501-1539 PROSPECT ROAD | SUPERIOR TOWNSHIP, MICHIGAN



## > MERCHANT MAP



Colliers International has prepared this document for advertising or general information only. Information contained herein has been obtained from sources deemed reliable. We have no reason to doubt its accuracy but we cannot guarantee it. All properties subject to change or withdrawal without notice.

**LOU FRANGO**  
PHONE 248 540 1000 EXT 1678  
EMAIL [lou.frango@colliers.com](mailto:lou.frango@colliers.com)



**COLLIERS INTERNATIONAL**  
2 Corporate Dr. | Suite 300  
Southfield, Michigan 48076

# SUMMARY PROFILE

2000-2010 Census, 2015 Estimates with 2020 Projections  
 Calculated using Weighted Block Centroid from Block Groups



Lat/Lon: 42.2615/-83.6035

RS1

1501 N Prospect Rd Ypsilanti, MI 48198		1 mi radius	3 mi radius	5 mi radius
<b>POPULATION</b>	2015 Estimated Population	8,948	57,378	112,686
	2020 Projected Population	8,944	58,129	113,370
	2010 Census Population	8,611	54,657	109,340
	2000 Census Population	7,873	58,351	103,832
	Projected Annual Growth 2015 to 2020	-	0.3%	0.1%
	Historical Annual Growth 2000 to 2015	0.9%	-0.1%	0.6%
	2015 Median Age	33.7	32.6	33.8
<b>HOUSEHOLDS</b>	2015 Estimated Households	3,608	24,373	48,102
	2020 Projected Households	3,746	25,549	50,026
	2010 Census Households	3,388	22,531	45,359
	2000 Census Households	3,070	23,201	42,479
	Projected Annual Growth 2015 to 2020	0.8%	1.0%	0.8%
	Historical Annual Growth 2000 to 2015	1.2%	0.3%	0.9%
<b>RACE AND ETHNICITY</b>	2015 Estimated White	53.4%	56.4%	58.9%
	2015 Estimated Black or African American	37.0%	33.8%	27.7%
	2015 Estimated Asian or Pacific Islander	3.7%	3.3%	7.1%
	2015 Estimated American Indian or Native Alaskan	0.3%	0.4%	0.4%
	2015 Estimated Other Races	5.6%	6.1%	5.9%
	2015 Estimated Hispanic	4.5%	5.2%	5.3%
<b>INCOME</b>	2015 Estimated Average Household Income	\$62,951	\$52,291	\$66,126
	2015 Estimated Median Household Income	\$54,294	\$41,864	\$54,323
	2015 Estimated Per Capita Income	\$25,422	\$22,588	\$28,495
<b>EDUCATION (AGE 25+)</b>	2015 Estimated Elementary (Grade Level 0 to 8)	1.4%	2.9%	2.6%
	2015 Estimated Some High School (Grade Level 9 to 11)	5.6%	7.9%	6.0%
	2015 Estimated High School Graduate	22.5%	21.5%	18.3%
	2015 Estimated Some College	25.7%	26.3%	22.7%
	2015 Estimated Associates Degree Only	8.7%	8.0%	8.3%
	2015 Estimated Bachelors Degree Only	20.9%	18.6%	21.8%
	2015 Estimated Graduate Degree	15.1%	14.7%	20.3%
<b>BUSINESS</b>	2015 Estimated Total Businesses	211	1,910	4,375
	2015 Estimated Total Employees	1,811	18,541	48,969
	2015 Estimated Employee Population per Business	8.6	9.7	11.2
	2015 Estimated Residential Population per Business	42.4	30.0	25.8

This report was produced using data from private and government sources deemed to be reliable. The information herein is provided without representation or warranty.