



For Lease

Former CVS • Property Highlights

444 Main Street | Belleville, MI

- 8,873 SF Space Available
- Former CVS
- Large Basement for Storage
- Zoning: B-2 Central Business
- ADT: 11,700 on Main Street
- Free Municipal Parking

Demographics

| | 1 MILE | 3 MILE | 5 MILE |
|-------------|----------|----------|----------|
| POPULATION | 5,835 | 16,610 | 30,115 |
| AVG. INCOME | \$92,691 | \$93,534 | \$95,129 |
| HOUSEHOLDS | 2,704 | 7,962 | 13,530 |



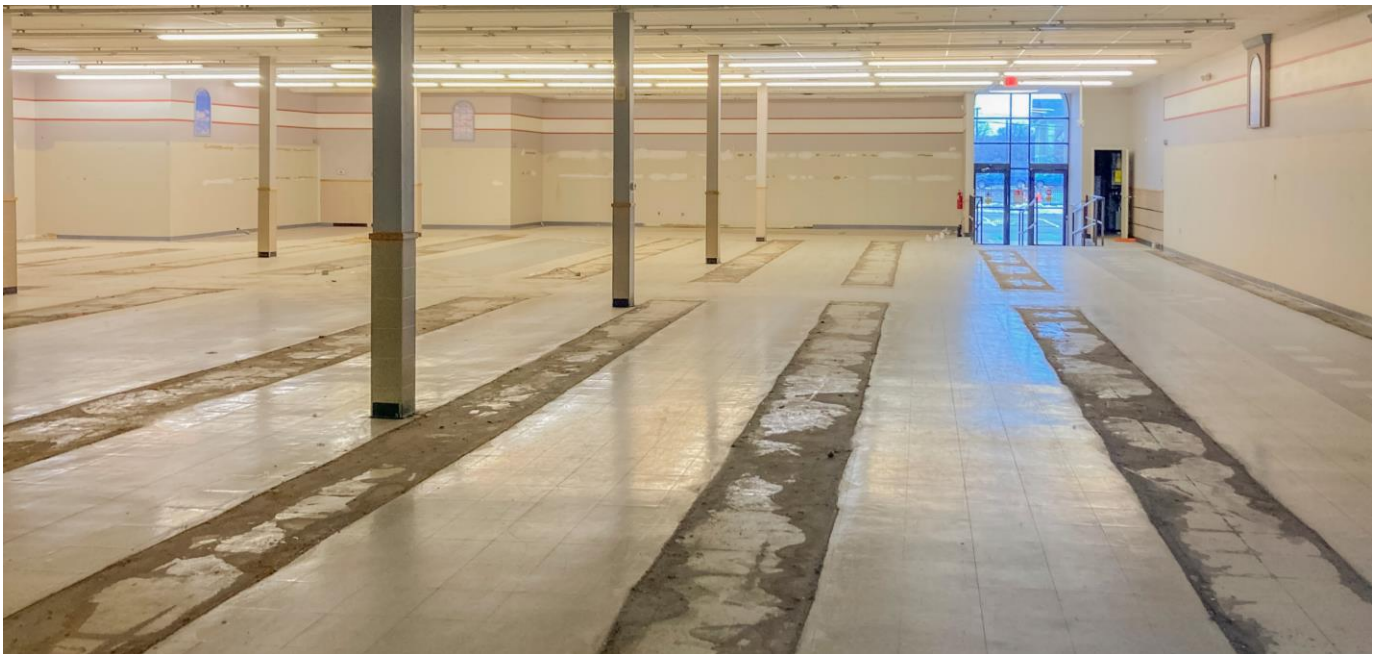
Lou Frango
Direct | 248 226 1678
lou.frango@colliers.com

For Lease • 8,873 SF Former CVS

444 Main Street | Belleville, MI



Property Photos

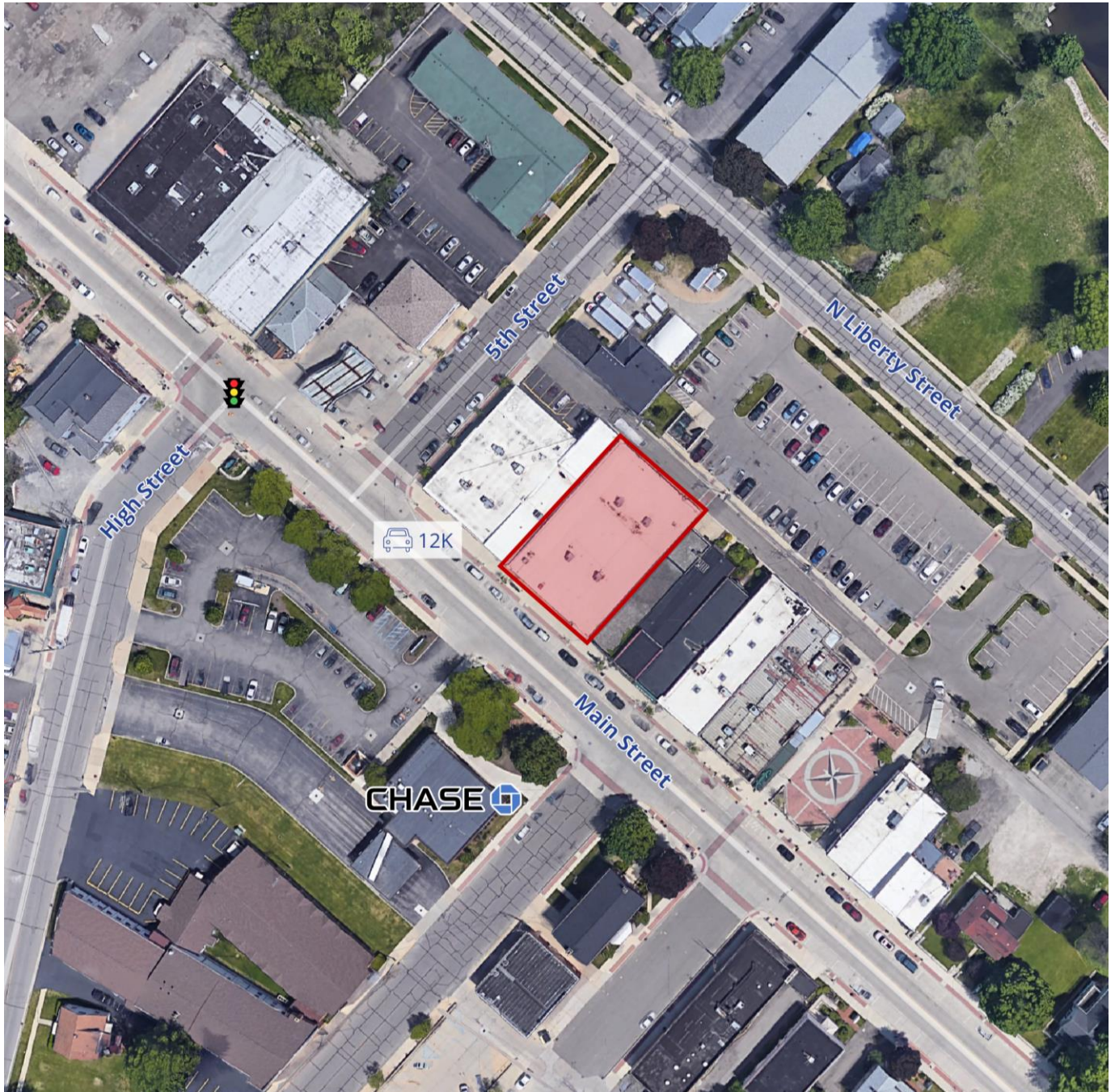


For Lease • 8,873 SF Former CVS

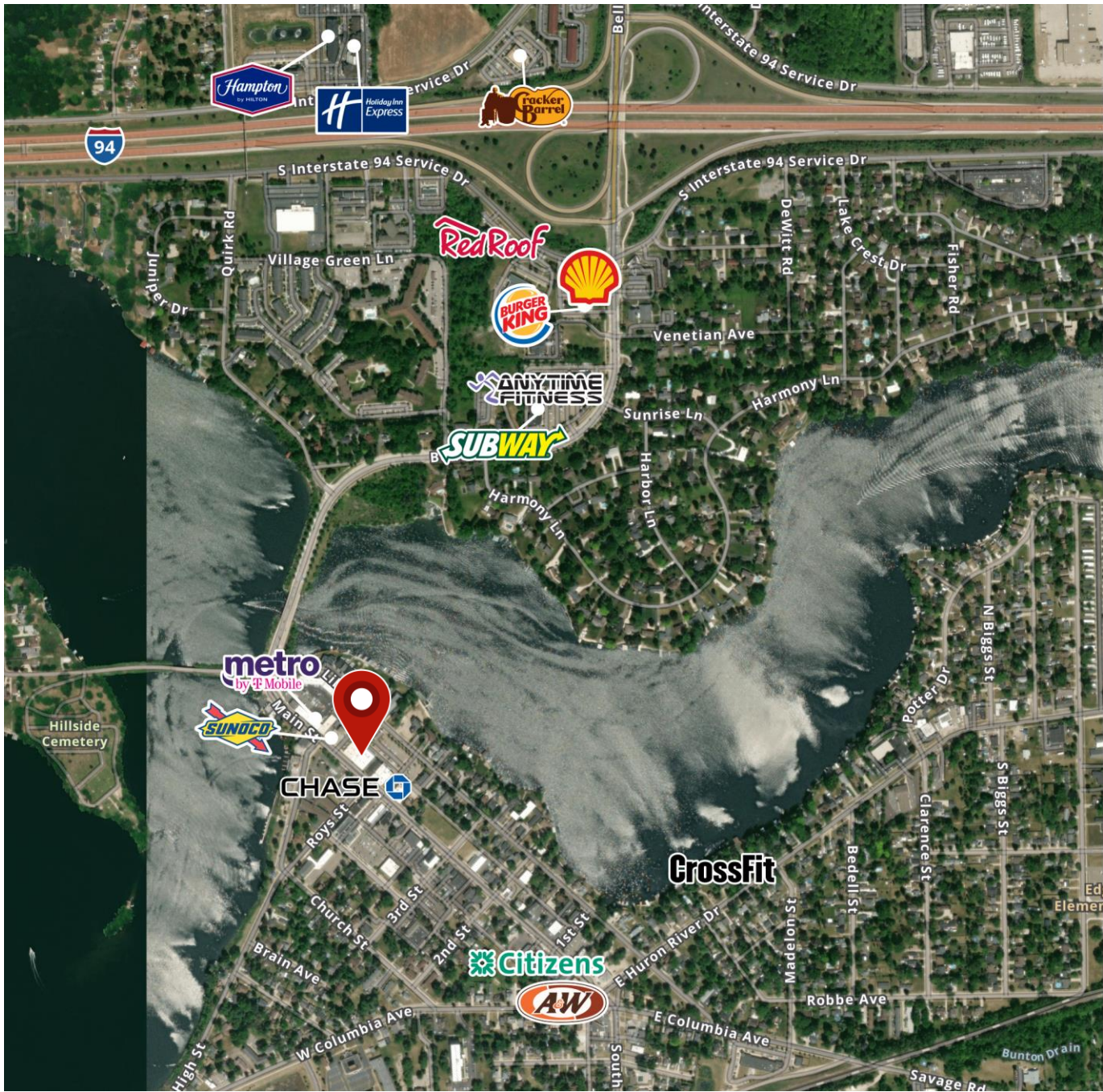
444 Main Street | Belleville, MI



Aerial



Merchant Map

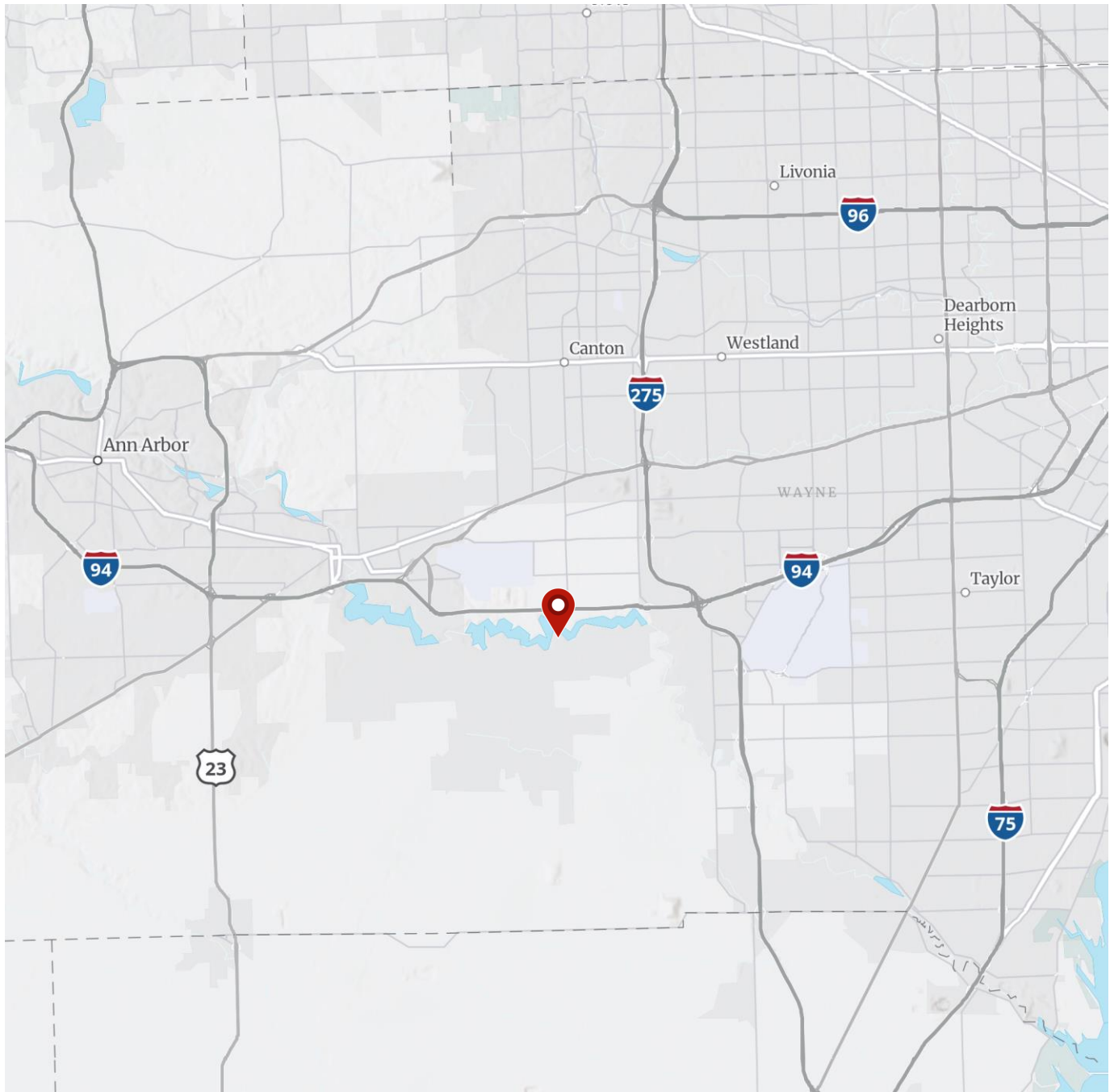


For Lease • 8,873 SF Former CVS

444 Main Street | Belleville, MI



Location Map



Demographics

| Current Year Summary | 1 Mile Radius | 3 Mile Radius | 5 Mile Radius |
|---|---------------|---------------|----------------|
| Total Population | 5,835 | 16,610 | 30,115 |
| Total Households | 2,704 | 7,962 | 13,530 |
| Total Family Households | 1,458 | 4,248 | 7,931 |
| Average Household Size | 2.14 | 2.08 | 2.22 |
| Median Age | 40.4 | 40.5 | 39.5 |
| Population Age 25+ | 4,172 | 12,029 | 21,403 |
| 2010 – 2021 Population: Annual Growth Rate (CAGR) | 0.01% | 0.09% | 0.40% |
| 2022 – 2023 Population: Annual Growth Rate (CAGR) | -0.55% | -0.36% | -0.58% |
| Five Year Projected Trends: Annual Rate | 1 Mile Radius | 3 Mile Radius | 5 Mile Radius |
| Population | -0.35% | -0.29% | -0.24% |
| Households | -0.12% | -0.04% | 0.00% |
| Families | -0.23% | -0.14% | -0.09% |
| Median Household Income | 2.97% | 3.47% | 3.64% |
| Current Year Population by Sex | 1 Mile Radius | 3 Mile Radius | 5 Mile Radius |
| Male Population / % Male | 2,757 / 47.3% | 8,016 / 48.3% | 14,734 / 48.9% |
| Female Population / % Female | 3,078 / 52.8% | 8,594 / 51.7% | 15,381 / 51.1% |
| Income and Households Summary | 1 Mile Radius | 3 Mile Radius | 5 Mile Radius |
| 2020 Median Household Income | \$58,428 | \$64,916 | \$66,800 |
| Average Household income | \$92,691 | \$93,534 | \$95,129 |
| Per Capita Income | \$43,587 | \$44,685 | \$42,565 |
| Summary Business Data | 1 Mile Radius | 3 Mile Radius | 5 Mile Radius |
| Total Businesses | 278 | 492 | 725 |
| Total Daytime Population | 5,833 | 14,646 | 26,576 |
| Daytime Population: Workers | 2,645 | 6,601 | 12,127 |
| Daytime Population: Residents | 3,188 | 8,045 | 14,449 |

Data Notes:

- Household population includes persons not residing in group quarters. Average Household Size is the household population divided by total households. Persons in families include the householder and persons related to the householder by birth, marriage, or adoption.
- Income represents the preceding year, expressed in current dollars. Household income includes wage and salary earnings, interest dividends, net rents, pensions, SSI and welfare payments, child support, and alimony.
- Per Capita Income represents the income received by all persons aged 15 years and over divided by the total population.



Lou Frango
Direct | 248 226 1678
lou.frango@colliers.com