



### VACANT LAND

Located at the intersection of  
Greenwell Springs Rd. and Sullivan Rd.

CVS owned site - CVS #5374

+/- 2.047 Acre Tract of Land

+/- 201.23' of Frontage on Greenwell Springs Rd.

Sale Price: \$799,000

**Charlie Colvin**

225.237.3343 | [ccolvin@beaubox.com](mailto:ccolvin@beaubox.com)

**Paul Dominique**

225.237.3343 | [pdominique@beaubox.com](mailto:pdominique@beaubox.com)

5500 Bankers Avenue, Baton Rouge, LA. 70808 | 225.237.3343 | [www.beaubox.com](http://www.beaubox.com)

Broker of Record, Beau J. Box; Licensed by the Louisiana Real Estate Commission, Mississippi Real Estate Commission, and Alabama Real Estate Commission, USA. This information has been secured from sources we believe to be reliable, but we make no representations or warranties, expressed or implied, as to the accuracy of the information. References to square footage or age are approximate. Buyer must verify the information and bears all risk for any inaccuracies.

© Beau Box Commercial Real Estate.12/1/2015





# FOR SALE: Vacant Land

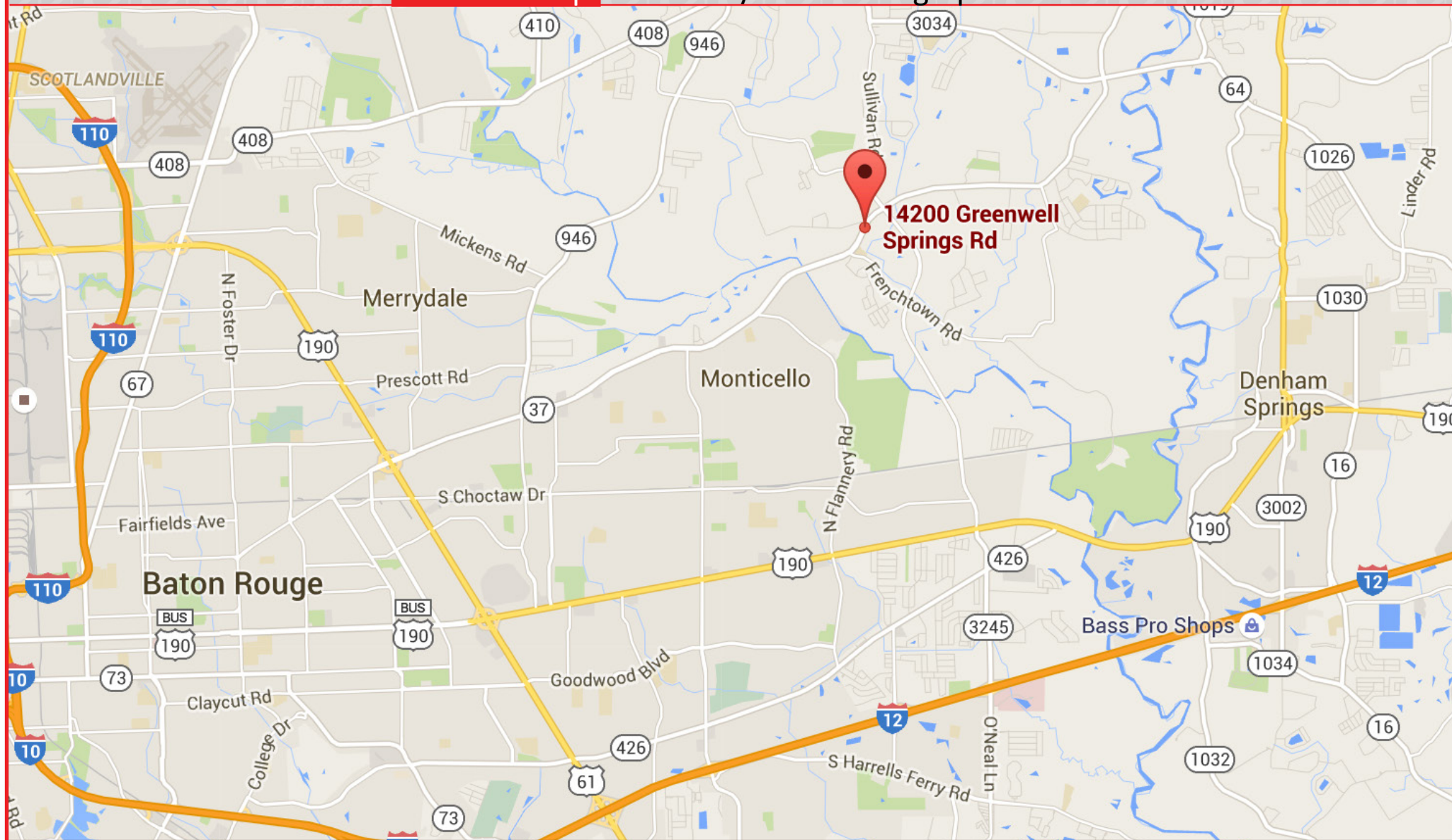
**CVS #5374 - 14200 Greenwell Springs Rd. Central, LA 70739**

Overview

**Location Map**

Survey

Demographics



**Charlie Colvin**

225.237.3343 | [ccolvin@beaubox.com](mailto:ccolvin@beaubox.com)

**Paul Dominique**

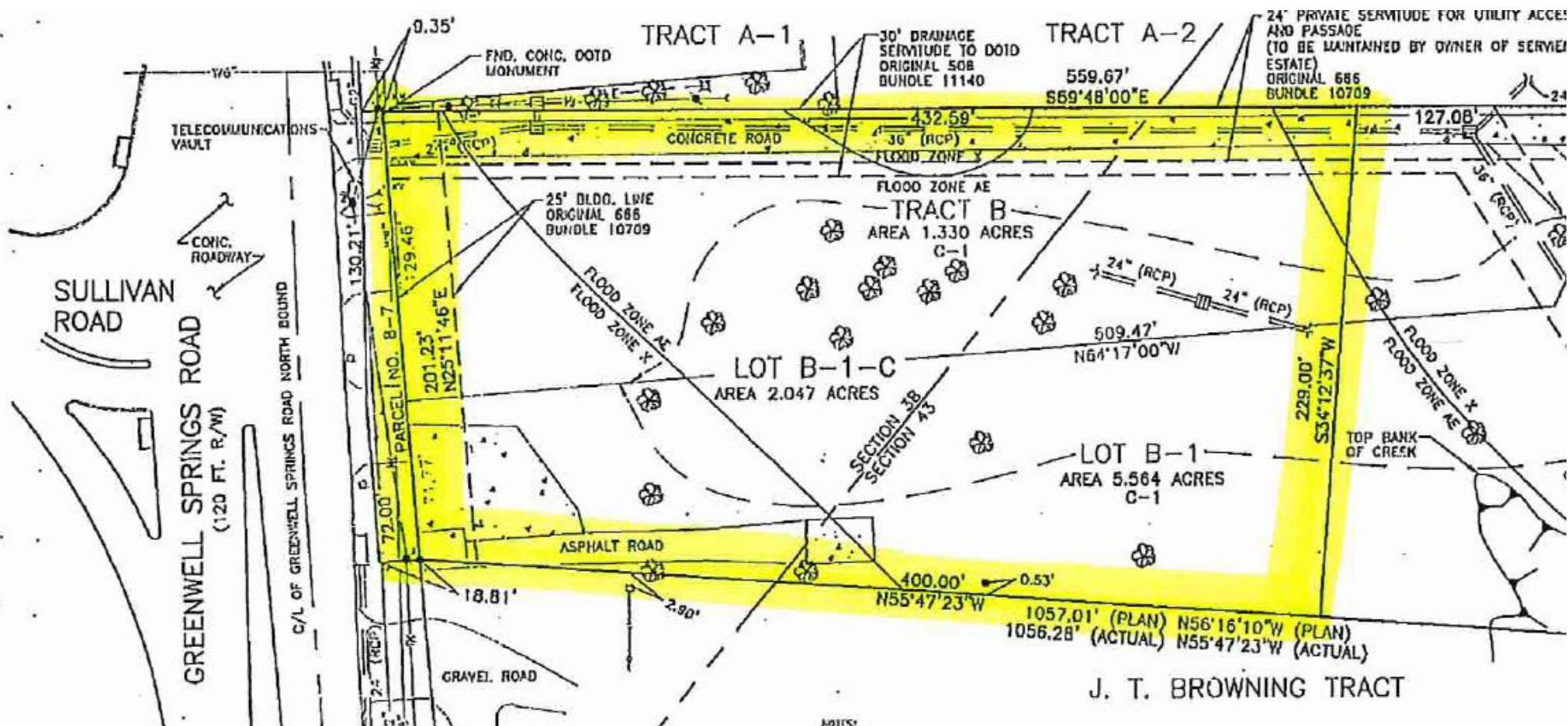
225.237.3343 | [pdominique@beaubox.com](mailto:pdominique@beaubox.com)

5500 Bankers Avenue, Baton Rouge, LA. 70808 | 225.237.3343 | [www.beaubox.com](http://www.beaubox.com)

Broker of Record, Beau J. Box; Licensed by the Louisiana Real Estate Commission, Mississippi Real Estate Commission, and Alabama Real Estate Commission, USA. This information has been secured from sources we believe to be reliable, but we make no representations or warranties, expressed or implied, as to the accuracy of the information. References to square footage or age are approximate. Buyer must verify the information and bears all risk for any inaccuracies.

© Beau Box Commercial Real Estate.12/1/2015





Survey Provided by EBR Clerk of Court

**Charlie Colvin**

225.237.3343 | ccolvin@beaubox.com

**Paul Dominique**

225.237.3343 | pdominique@beaubox.com

5500 Bankers Avenue, Baton Rouge, LA. 70808 | 225.237.3343 | www.beaubox.com

Broker of Record, Beau J. Box; Licensed by the Louisiana Real Estate Commission, Mississippi Real Estate Commission, and Alabama Real Estate Commission, USA. This information has been secured from sources we believe to be reliable, but we make no representations or warranties, expressed or implied, as to the accuracy of the information. References to square footage or age are approximate. Buyer must verify the information and bears all risk for any inaccuracies.

© Beau Box Commercial Real Estate.12/1/2015



# FOR SALE: Vacant Land

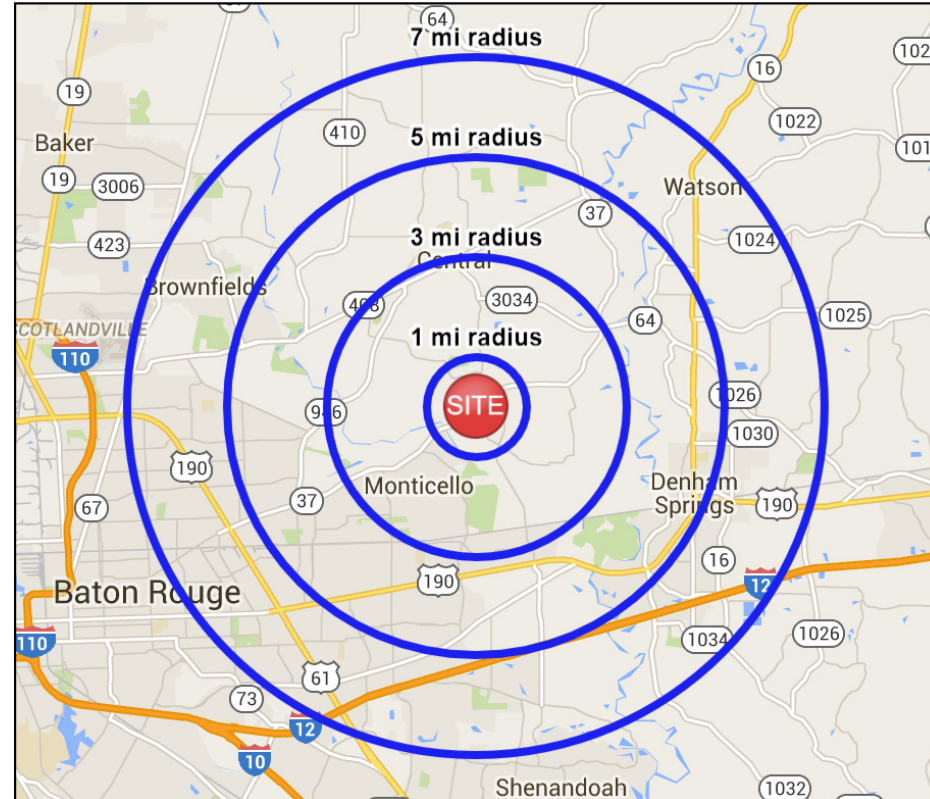
**CVS #5374 - 14200 Greenwell Springs Rd. Central, LA 70739**

Overview

Location Map

Survey

**Demographics**



<b>Radiues</b>	<b>1 Mile</b>	<b>3 Mile</b>	<b>5 Mile</b>	<b>7 Mile</b>
<b>2015 Est. Population:</b>	1,668	21,810	90,689	201,571
<b>2010 Population Census:</b>	1,672	21,668	91,190	204,599
<b>2010 Census House Holds (HH):</b>	626	7,456	32,611	75,196
<b>2015 Est. Avg. HH Income:</b>	\$88,993	\$76,435	\$67,030	\$63,485
<i>Estimates calculated using Weight Block Centroid From Block Groups. 2000-2010 Census.</i>				

**Charlie Colvin**

225.237.3343 | ccolvin@beaubox.com

**Paul Dominique**

225.237.3343 | pdominique@beaubox.com

Broker of Record, Beau J. Box; Licensed by the Louisiana Real Estate Commission, Mississippi Real Estate Commission, and Alabama Real Estate Commission, USA. This information has been secured from sources we believe to be reliable, but we make no representations or warranties, expressed or implied, as to the accuracy of the information. References to square footage or age are approximate. Buyer must verify the information and bears all risk for any inaccuracies.

© Beau Box Commercial Real Estate.12/1/2015

5500 Bankers Avenue, Baton Rouge, LA. 70808 | 225.237.3343 | www.beaubox.com