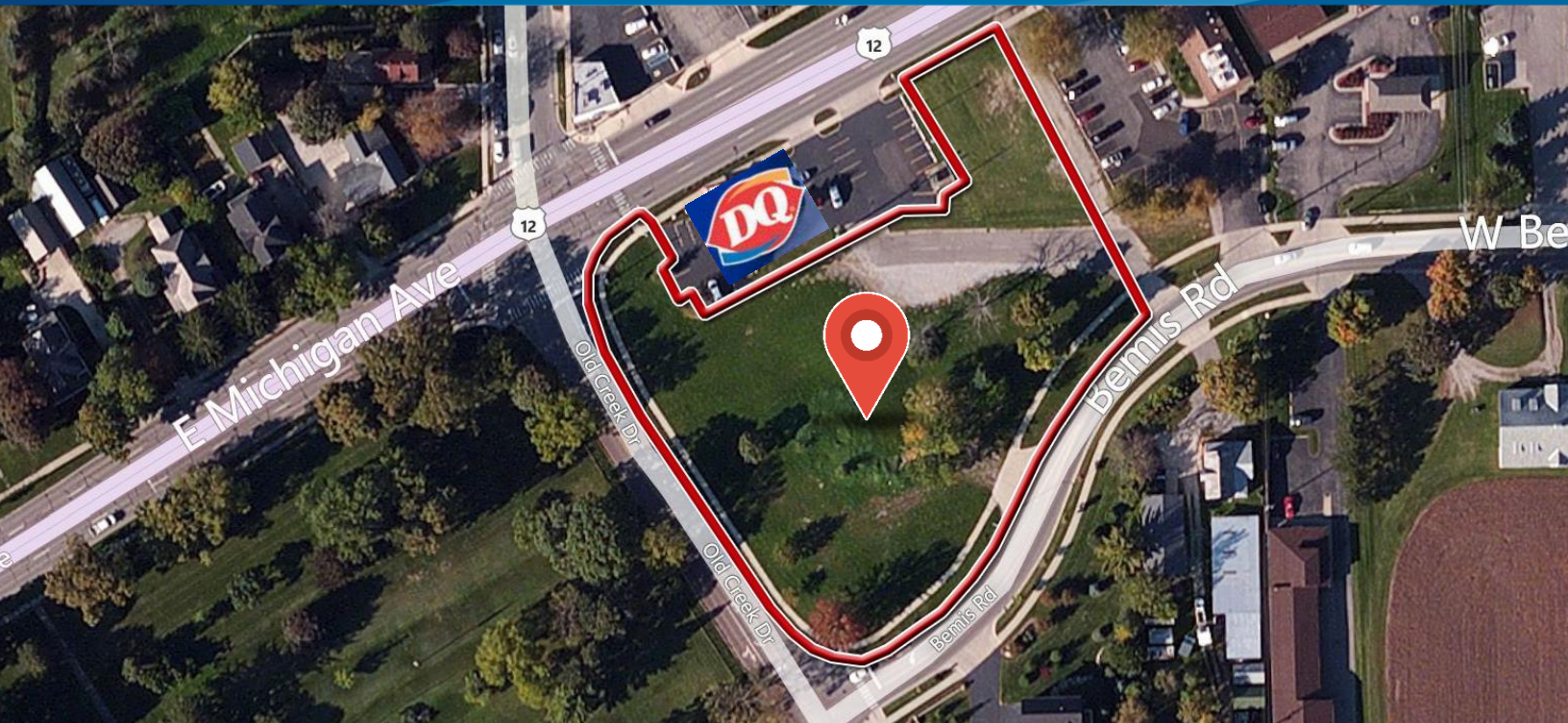


FOR LEASE > VACANT LAND

# 1.84 ACRES

422 EAST MICHIGAN AVENUE | SALINE, MICHIGAN



## TRAFFIC COUNTS OF 26,000

### > PROPERTY HIGHLIGHTS

- 1.84 Acres Available for Lease
- Frontage on Michigan Avenue, Old Creek Drive & Bemis Road
- Access from Bemis Road
- High Traffic Counts & Great Demographics

DEMOGRAPHICS	Category	1 Mile	3 Mile	5 Mile
	Population	5,297	19,074	33,848
	Average Income	\$79,768	\$110,633	\$113,728
	Households	2,402	7,472	13,469

**COLLIERS INTERNATIONAL**  
2 Corporate Drive | Suite 300  
Southfield, Michigan 48076

For More Information Call:

**LOU FRANGO**

PHONE 248 540 1000 EXT 1678

EMAIL [lou.frango@colliers.com](mailto:lou.frango@colliers.com)



[colliers.com/detroit](http://colliers.com/detroit)



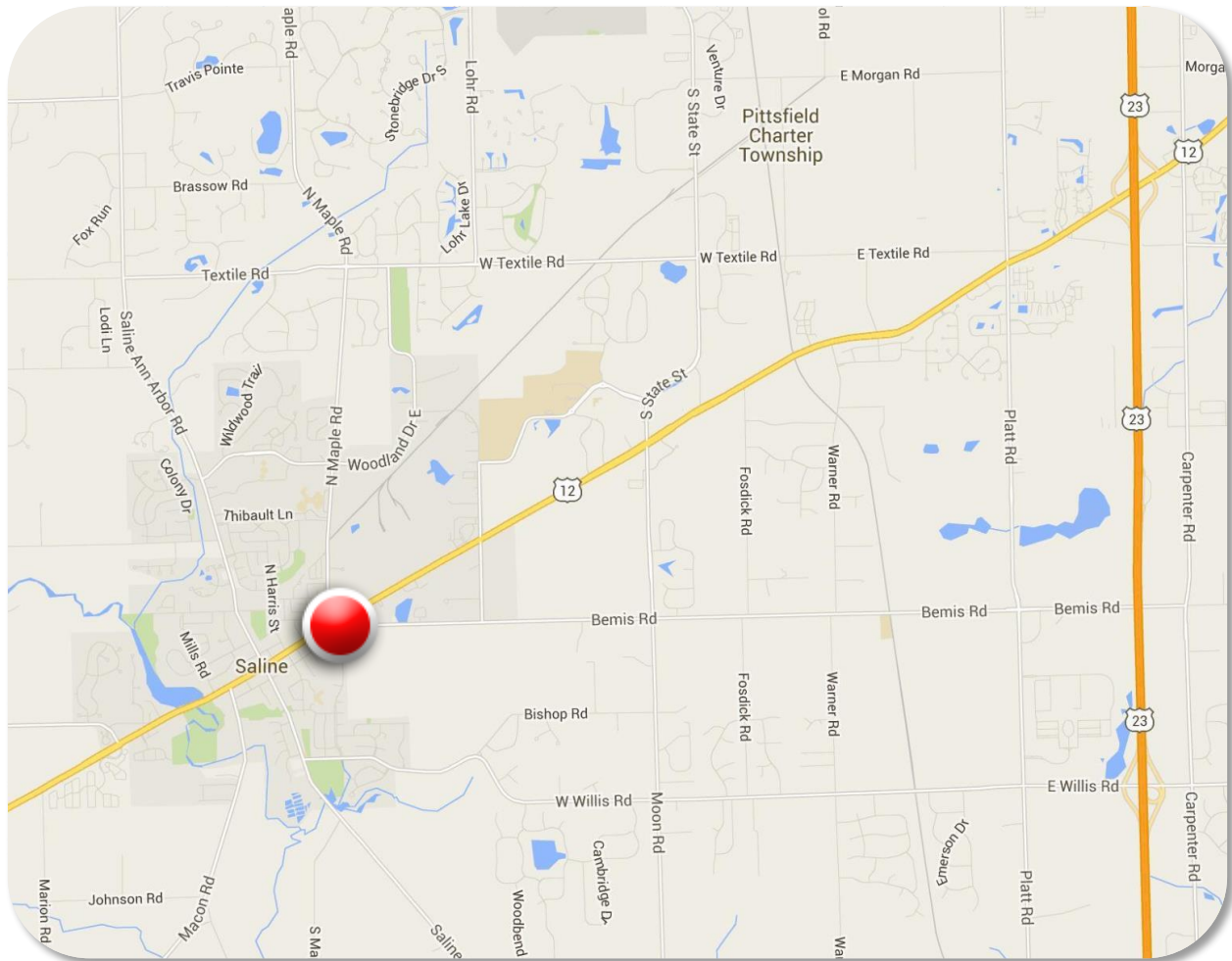
FOR LEASE > VACANT LAND

# 1.84 ACRES

422 EAST MICHIGAN AVENUE | SALINE, MICHIGAN



## > LOCATION MAP



**LOU FRANGO**  
PHONE 248 540 1000 EXT 1678  
EMAIL [lou.frango@colliers.com](mailto:lou.frango@colliers.com)



**COLLIERS INTERNATIONAL**  
2 Corporate Dr. | Suite 300  
Southfield, Michigan 48076



FOR LEASE > VACANT LAND

# 1.84 ACRES

422 EAST MICHIGAN AVENUE | SALINE, MICHIGAN

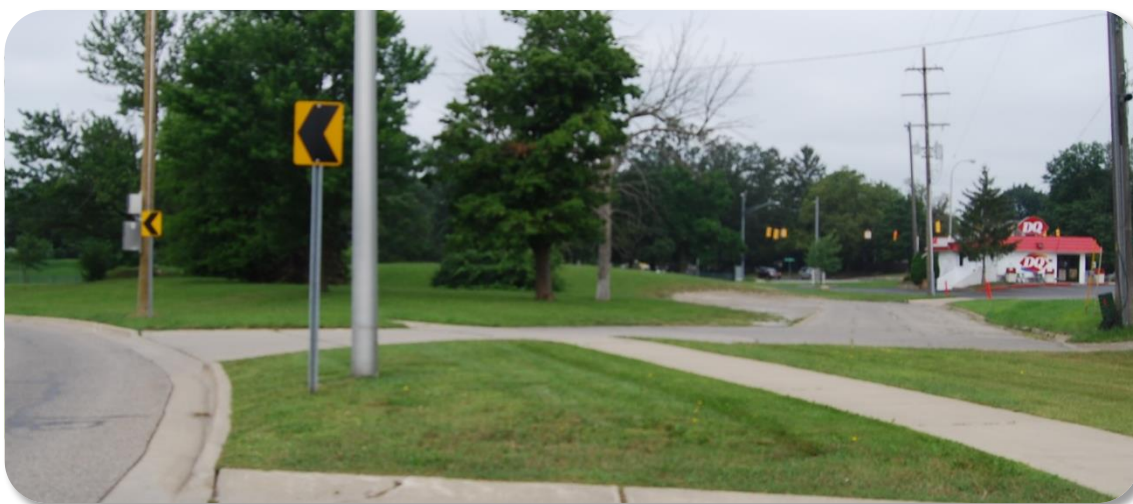


## > PROPERTY PHOTOS

### LAND SURROUNDS THE DAIRY QUEEN



### ACCESS FROM BEMIS ROAD



**LOU FRANGO**

PHONE 248 540 1000 EXT 1678

EMAIL [lou.frango@colliers.com](mailto:lou.frango@colliers.com)



**COLLIERS INTERNATIONAL**

2 Corporate Dr. | Suite 300  
Southfield, Michigan 48076

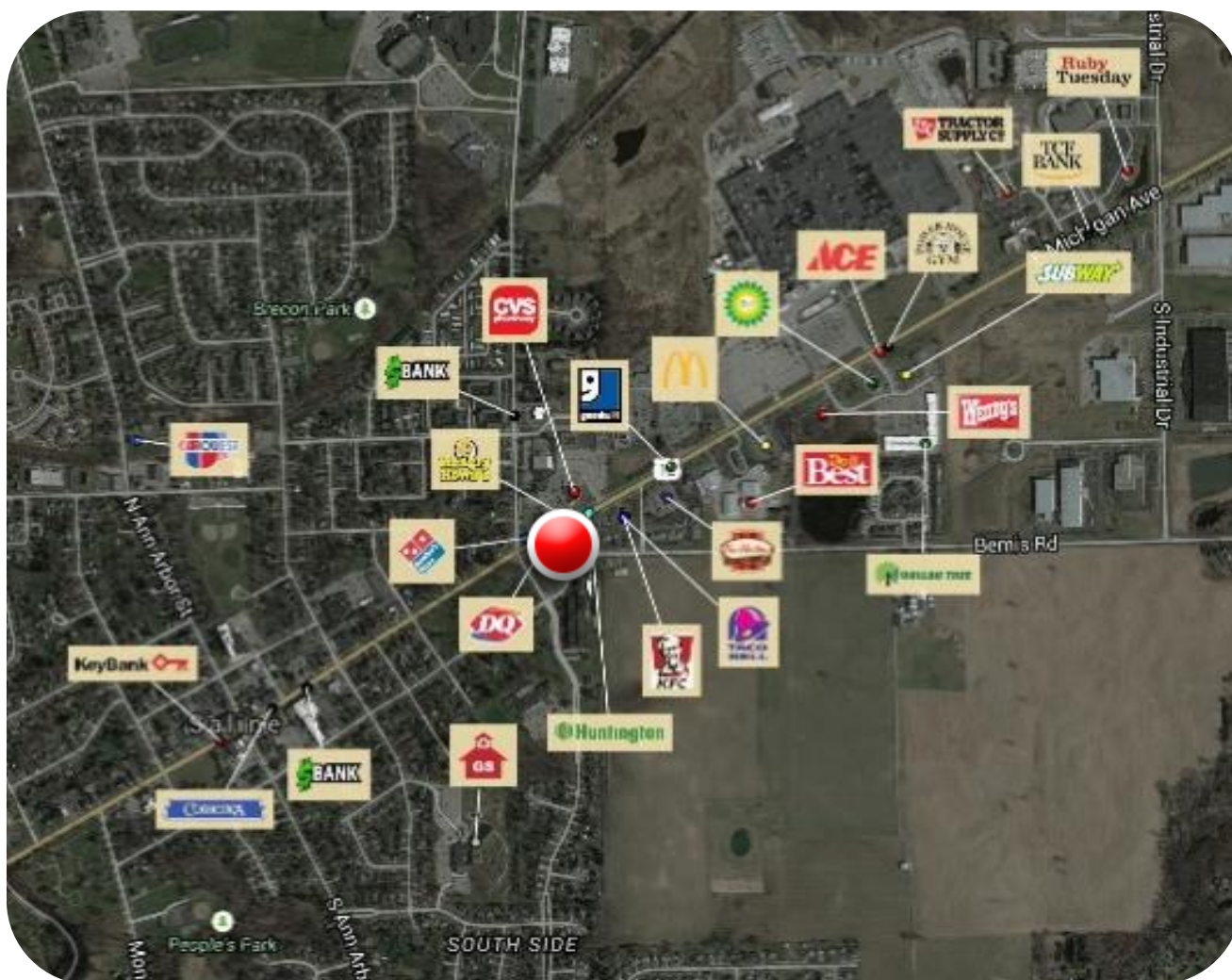
FOR LEASE > VACANT LAND

# 1.84 ACRES

422 EAST MICHIGAN AVENUE | SALINE, MICHIGAN



## > AREA MERCHANT MAP



Colliers International has prepared this document for advertising or general information only. Information contained herein has been obtained from sources deemed reliable. We have no reason to doubt its accuracy but we cannot guarantee it. All properties subject to change or withdrawal without notice.

**LOU FRANGO**  
PHONE 248 540 1000 EXT 1678  
EMAIL [lou.frango@colliers.com](mailto:lou.frango@colliers.com)



**COLLIERS INTERNATIONAL**  
2 Corporate Dr. | Suite 300  
Southfield, Michigan 48076

# SUMMARY PROFILE

2000-2010 Census, 2015 Estimates with 2020 Projections

Calculated using Weighted Block Centroid from Block Groups



Lat/Lon: 42.1702/-83.7729

RS1

422 E Michigan Ave Saline, MI 48176		1 mi radius	3 mi radius	5 mi radius
POPULATION	2015 Estimated Population	5,297	19,074	33,848
	2020 Projected Population	5,340	19,198	34,049
	2010 Census Population	5,316	19,410	34,371
	2000 Census Population	5,006	16,153	29,393
	Projected Annual Growth 2015 to 2020	0.2%	0.1%	0.1%
	Historical Annual Growth 2000 to 2015	0.4%	1.2%	1.0%
	2015 Median Age	40.6	41.2	40.4
HOUSEHOLDS	2015 Estimated Households	2,402	7,472	13,469
	2020 Projected Households	2,472	7,699	13,879
	2010 Census Households	2,304	7,263	13,066
	2000 Census Households	2,030	5,770	10,302
	Projected Annual Growth 2015 to 2020	0.6%	0.6%	0.6%
	Historical Annual Growth 2000 to 2015	1.2%	2.0%	2.0%
RACE AND ETHNICITY	2015 Estimated White	92.3%	90.2%	85.5%
	2015 Estimated Black or African American	1.9%	2.1%	3.4%
	2015 Estimated Asian or Pacific Islander	3.0%	5.0%	7.9%
	2015 Estimated American Indian or Native Alaskan	0.2%	0.3%	0.3%
	2015 Estimated Other Races	2.5%	2.5%	2.9%
	2015 Estimated Hispanic	3.1%	2.9%	3.5%
INCOME	2015 Estimated Average Household Income	\$79,768	\$110,633	\$113,728
	2015 Estimated Median Household Income	\$64,612	\$92,695	\$94,569
	2015 Estimated Per Capita Income	\$36,268	\$43,386	\$45,389
EDUCATION (AGE 25+)	2015 Estimated Elementary (Grade Level 0 to 8)	1.0%	1.1%	1.2%
	2015 Estimated Some High School (Grade Level 9 to 11)	6.4%	4.0%	3.8%
	2015 Estimated High School Graduate	11.5%	9.8%	8.9%
	2015 Estimated Some College	15.4%	14.0%	13.7%
	2015 Estimated Associates Degree Only	5.0%	5.7%	5.2%
	2015 Estimated Bachelors Degree Only	28.2%	25.2%	23.4%
	2015 Estimated Graduate Degree	32.7%	40.2%	43.9%
BUSINESS	2015 Estimated Total Businesses	441	933	1,674
	2015 Estimated Total Employees	7,250	12,704	24,137
	2015 Estimated Employee Population per Business	16.4	13.6	14.4
	2015 Estimated Residential Population per Business	12.0	20.4	20.2

This report was produced using data from private and government sources deemed to be reliable. The information herein is provided without representation or warranty.