

FOR LAND LEASE > VACANT LAND

# 1.1 ACRES

SIENA HEIGHTS & N MAIN STREET | ADRIAN, MICHIGAN



## GREAT ADRIAN LAND LEASE

### > PROPERTY HIGHLIGHTS

- Over an Acre of Land Available for Lease
- High Density Population
- Located Adjacent to a Busy 24-Hour CVS Pharmacy
- Minutes from Siena Heights University & Downtown Adrian

DEMOGRAPHICS	Category	1 Mile	3 Mile	5 Mile
	Population	8,935	32,555	39,072
	Average Income	\$42,339	\$48,670	\$51,810
	Households	3,536	11,709	14,233

**COLLIERS INTERNATIONAL**  
2 Corporate Drive | Suite 300  
Southfield, Michigan 48076

**For More Information Call:**

**KENT BUTLER**

PHONE 248 540 1000 EXT 1612  
EMAIL [kent.butler@colliers.com](mailto:kent.butler@colliers.com)



**GREG MALLORY**

PHONE 248 540 1000 EXT 1864  
EMAIL [greg.mallory@colliers.com](mailto:greg.mallory@colliers.com)



[colliers.com/detroit](http://colliers.com/detroit)



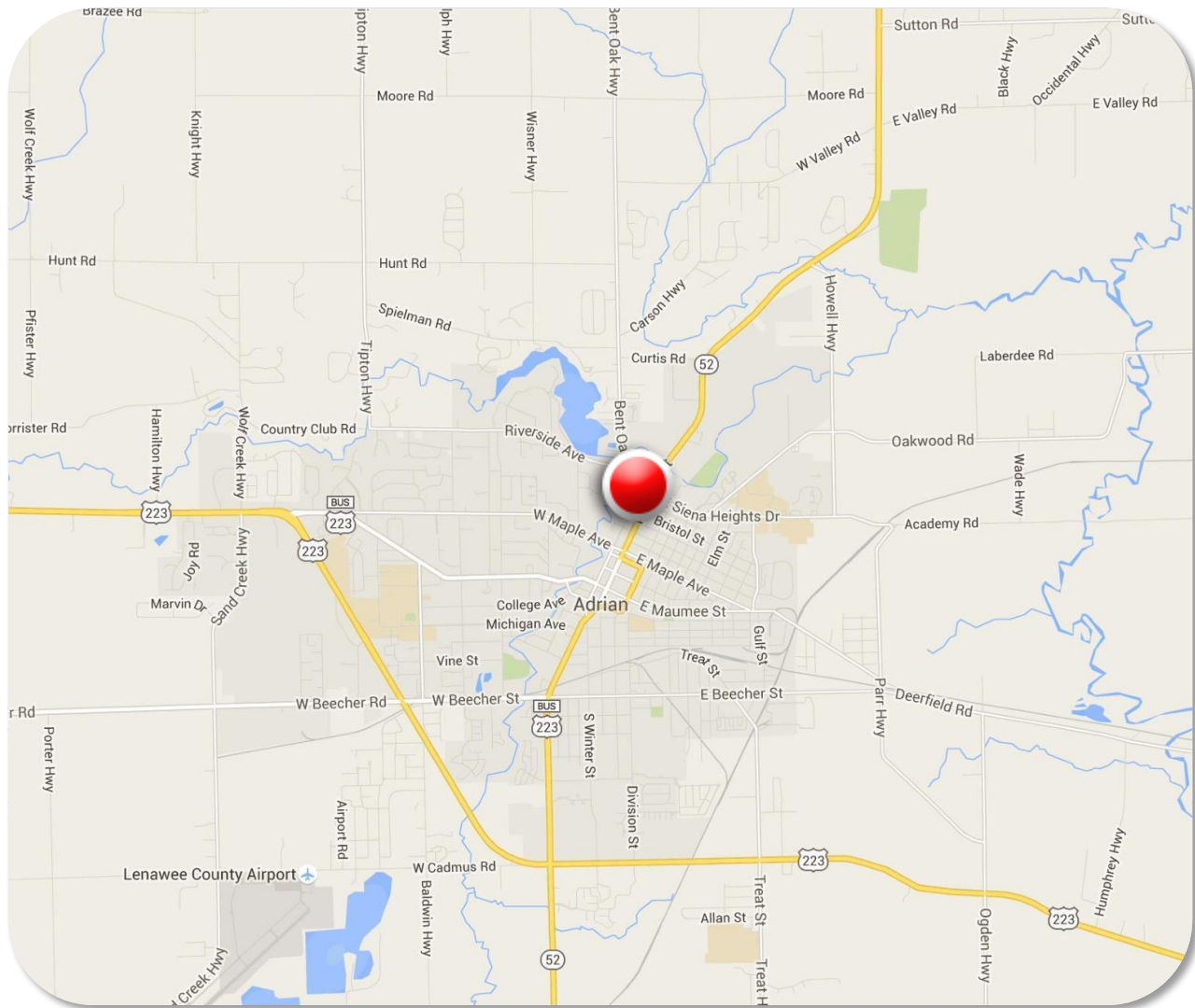
FOR LAND LEASE > VACANT LAND

# 1.1 ACRES

SIENA HEIGHTS & N MAIN STREET | ADRIAN, MICHIGAN



## > LOCATION MAP



Colliers International has prepared this document for advertising or general information only. Information contained herein has been obtained from sources deemed reliable. We have no reason to doubt its accuracy but we cannot guarantee it. All properties subject to change or withdrawal without notice.

**KENT BUTLER**

PHONE 248 540 1000 EXT 1612

EMAIL [kent.butler@colliers.com](mailto:kent.butler@colliers.com)



**GREG MALLORY**

PHONE 248 540 1000 EXT 1864

EMAIL [greg.mallory@colliers.com](mailto:greg.mallory@colliers.com)



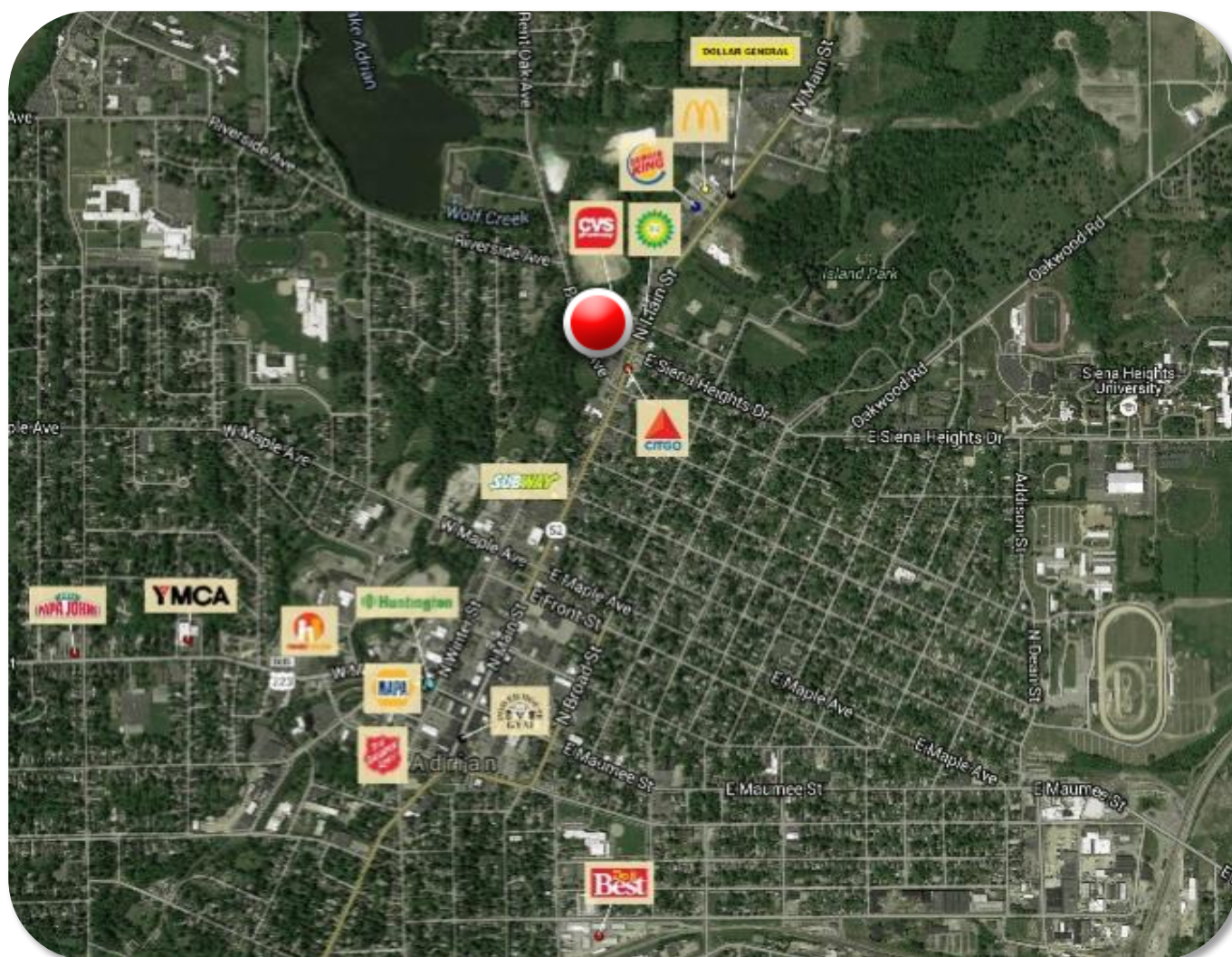
FOR LAND LEASE > VACANT LAND

# 1.1 ACRES

SIENA HEIGHTS & N MAIN STREET | ADRIAN, MICHIGAN



## > AREA MERCHANT MAP



Colliers International has prepared this document for advertising or general information only. Information contained herein has been obtained from sources deemed reliable. We have no reason to doubt its accuracy but we cannot guarantee it. All properties subject to change or withdrawal without notice.

**KENT BUTLER**  
PHONE 248 540 1000 EXT 1612  
EMAIL [kent.butler@colliers.com](mailto:kent.butler@colliers.com)



**GREG MALLORY**  
PHONE 248 540 1000 EXT 1864  
EMAIL [greg.mallory@colliers.com](mailto:greg.mallory@colliers.com)

We have no reason to doubt the accuracy of information contained herein, but we cannot guarantee it. All information should be verified prior to purchase and/or lease.

# SUMMARY PROFILE

2000-2010 Census, 2015 Estimates with 2020 Projections

Calculated using Weighted Block Centroid from Block Groups



Lat/Lon: 41.9078/-84.0328

RS1

101-199 W Siena Heights Dr

Adrian, MI 49221

1 mi radius

3 mi radius

5 mi radius

POPULATION	2015 Estimated Population	8,935	32,555	39,072
	2020 Projected Population	9,233	32,933	39,472
	2010 Census Population	8,617	32,315	38,984
	2000 Census Population	9,539	32,411	38,495
	Projected Annual Growth 2015 to 2020	0.7%	0.2%	0.2%
	Historical Annual Growth 2000 to 2015	-0.4%	-	0.1%
	2015 Median Age	34.9	36.7	37.5
HOUSEHOLDS	2015 Estimated Households	3,536	11,709	14,233
	2020 Projected Households	3,733	12,098	14,677
	2010 Census Households	3,287	11,248	13,751
	2000 Census Households	3,403	11,104	13,277
	Projected Annual Growth 2015 to 2020	1.1%	0.7%	0.6%
	Historical Annual Growth 2000 to 2015	0.3%	0.4%	0.5%
RACE AND ETHNICITY	2015 Estimated White	81.9%	83.4%	85.2%
	2015 Estimated Black or African American	5.6%	7.3%	6.2%
	2015 Estimated Asian or Pacific Islander	0.6%	0.8%	0.8%
	2015 Estimated American Indian or Native Alaskan	0.6%	0.5%	0.5%
	2015 Estimated Other Races	11.2%	8.0%	7.4%
	2015 Estimated Hispanic	20.1%	15.3%	14.1%
INCOME	2015 Estimated Average Household Income	\$42,339	\$48,670	\$51,810
	2015 Estimated Median Household Income	\$33,403	\$39,714	\$42,889
	2015 Estimated Per Capita Income	\$18,004	\$19,428	\$20,495
EDUCATION (AGE 25+)	2015 Estimated Elementary (Grade Level 0 to 8)	6.2%	5.7%	5.3%
	2015 Estimated Some High School (Grade Level 9 to 11)	12.1%	9.2%	8.4%
	2015 Estimated High School Graduate	37.7%	38.1%	37.6%
	2015 Estimated Some College	18.9%	20.2%	21.0%
	2015 Estimated Associates Degree Only	5.7%	7.4%	7.8%
	2015 Estimated Bachelors Degree Only	10.4%	11.5%	12.1%
	2015 Estimated Graduate Degree	9.0%	8.0%	7.7%
BUSINESS	2015 Estimated Total Businesses	529	1,436	1,648
	2015 Estimated Total Employees	6,040	17,151	19,869
	2015 Estimated Employee Population per Business	11.4	11.9	12.1
	2015 Estimated Residential Population per Business	16.9	22.7	23.7

This report was produced using data from private and government sources deemed to be reliable. The information herein is provided without representation or warranty.