

FOR LEASE > RETAIL

CVS CLAWSON CENTER

110 NORTH ROCHESTER ROAD | CLAWSON , MICHIGAN



EXCELLENT VISIBILITY WITH PYLON SIGNAGE

> PROPERTY HIGHLIGHTS

- 5,870 Square Foot Former Video Store Attached to CVS Pharmacy Available
- Great Neighborhood Location with Good Demographics and Rooftops
- Traffic Counts of 24,000 on 14 Mile Road & 15,000 on Rochester Road

	Category	1 Mile	3 Mile	5 Mile
DEMOGRAPHICS	Population	11,432	101,018	302,749
	Average Income	\$68,311	\$72,340	\$81,719
	Households	5,455	47,387	132,937

COLLIERS INTERNATIONAL
 2 Corporate Drive | Suite 300
 Southfield, Michigan 48076

For More Information Call:

LOU FRANGO

PHONE 248 540 1000 EXT 1678

EMAIL lou.frango@colliers.com



colliers.com/detroit



FOR SALE OR LEASE > OFFICE, INDUSTRIAL, LAND, RETAIL, etc.

BUILDING/PROPERTY NAME

ADDRESS OF PROPERTY | CITY, STATE



> BIRD'S EYE VIEW



LOU FRANGO
PHONE 248 540 1000 EXT 1678
EMAIL lou.frango@colliers.com



COLLIERS INTERNATIONAL
2 Corporate Dr. | Suite 300
Southfield, Michigan 48076

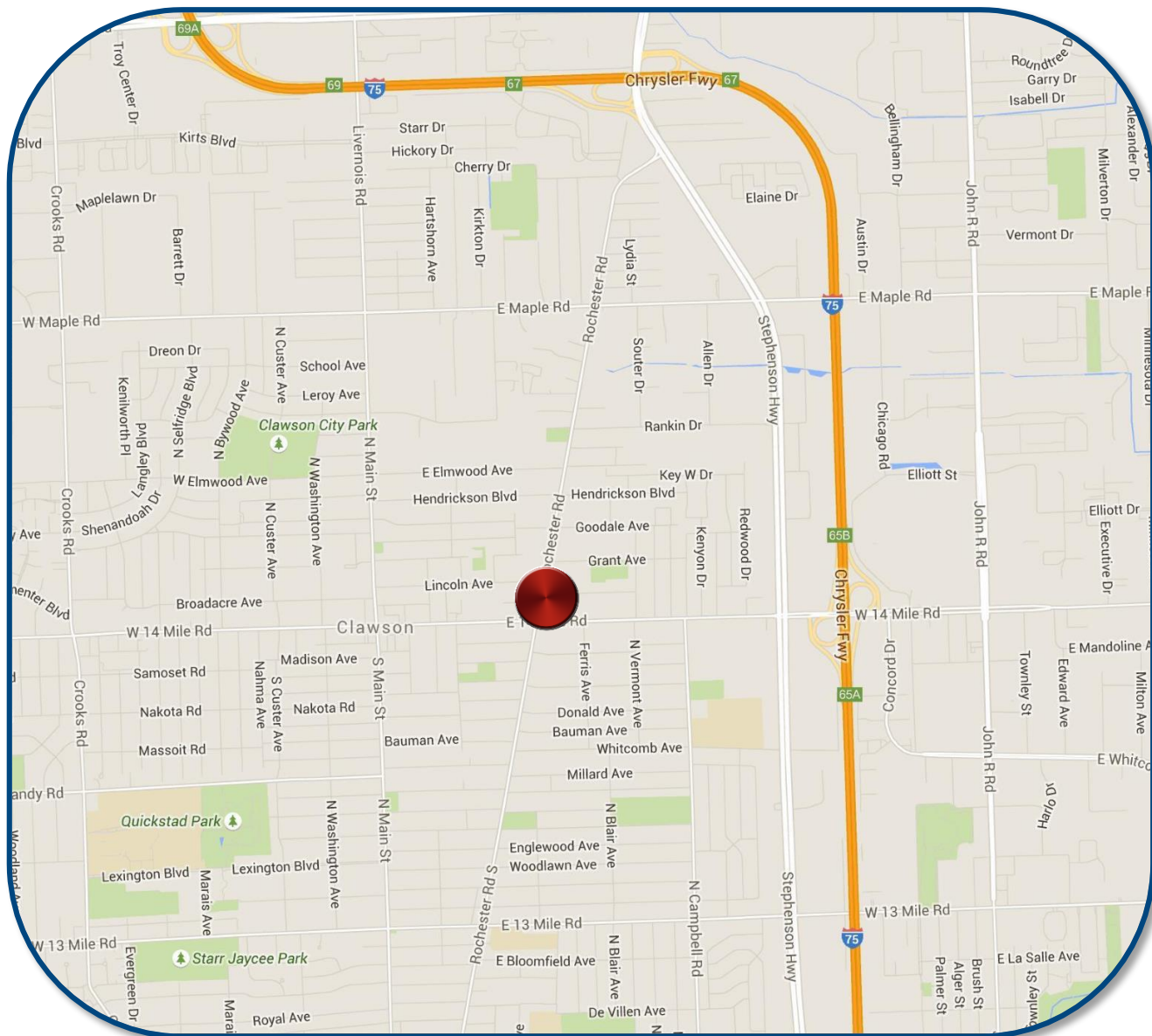
FOR LEASE > RETAIL

CVS CLAWSON CENTER

110 NORTH ROCHESTER ROAD | CLAWSON, MICHIGAN



> LOCATION MAP



LOU FRANGO
PHONE 248 540 1000 EXT 1678
EMAIL lou.frango@colliers.com



COLLIERS INTERNATIONAL
2 Corporate Dr. | Suite 300
Southfield, Michigan 48076

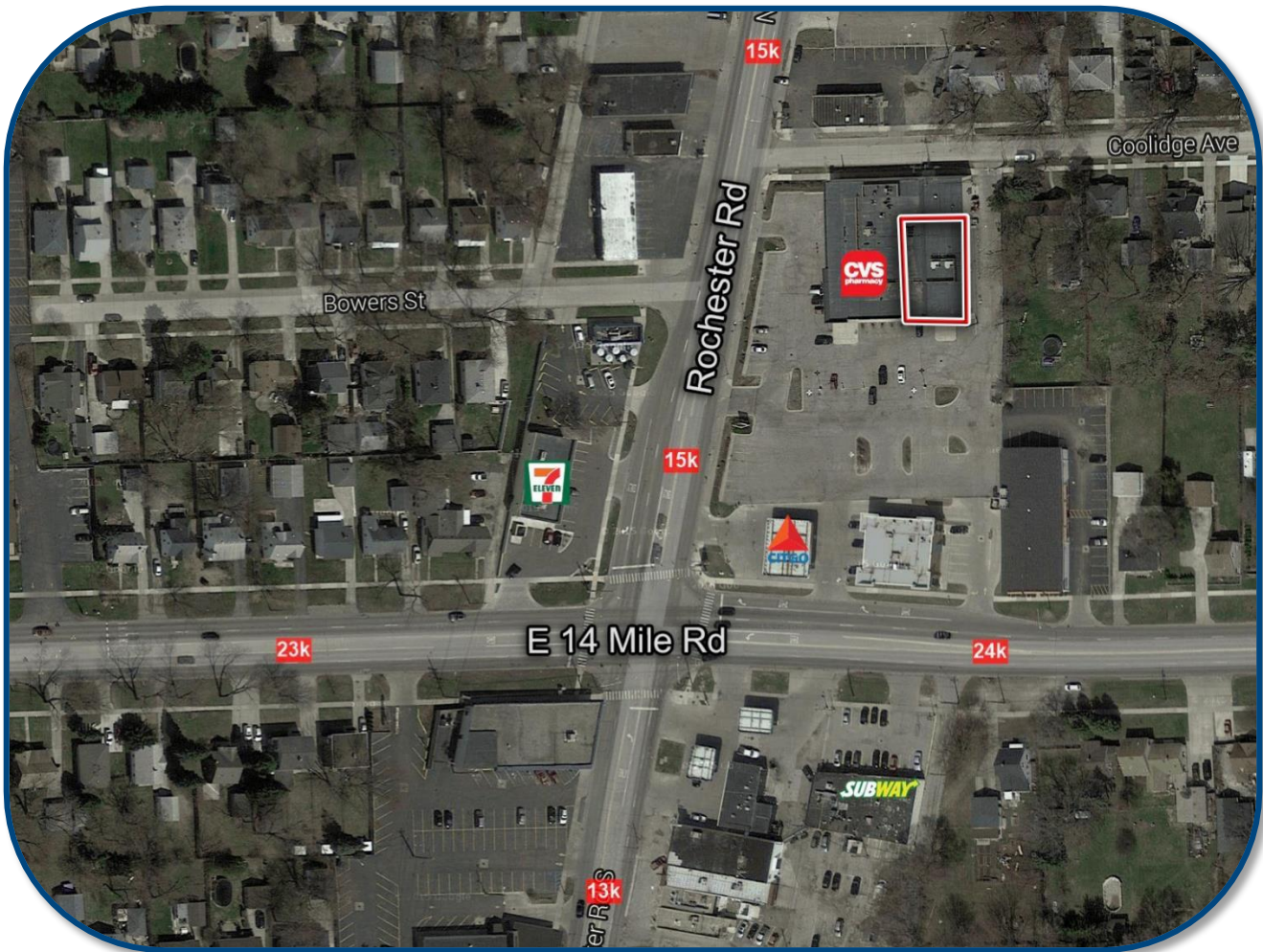
FOR LEASE > RETAIL

CVS CLAWSON CENTER

110 NORTH ROCHESTER ROAD | CLAWSON, MICHIGAN



> LOCATION MAP



LOU FRANGO
PHONE 248 540 1000 EXT 1678
EMAIL lou.frango@colliers.com



COLLIERS INTERNATIONAL
2 Corporate Dr. | Suite 300
Southfield, Michigan 48076

SUMMARY PROFILE

2000-2010 Census, 2015 Estimates with 2020 Projections

Calculated using Weighted Block Centroid from Block Groups



Lat/Lon: 42.5347/-83.1350

RS1

110 N Rochester Rd Clawson, MI 48017		1 mi radius	3 mi radius	5 mi radius
POPULATION	2015 Estimated Population	11,432	101,018	302,749
	2020 Projected Population	11,729	103,855	310,321
	2010 Census Population	11,511	100,216	303,321
	2000 Census Population	12,155	102,080	310,563
	Projected Annual Growth 2015 to 2020	0.5%	0.6%	0.5%
	Historical Annual Growth 2000 to 2015	-0.4%	-0.1%	-0.2%
	2015 Median Age	41.1	38.8	40
HOUSEHOLDS	2015 Estimated Households	5,455	47,387	132,937
	2020 Projected Households	5,667	49,388	138,256
	2010 Census Households	5,297	45,203	127,839
	2000 Census Households	5,420	46,265	129,956
	Projected Annual Growth 2015 to 2020	0.8%	0.8%	0.8%
	Historical Annual Growth 2000 to 2015	-	0.2%	0.2%
RACE AND ETHNICITY	2015 Estimated White	91.8%	80.7%	80.3%
	2015 Estimated Black or African American	2.8%	5.1%	8.0%
	2015 Estimated Asian or Pacific Islander	2.4%	11.1%	8.7%
	2015 Estimated American Indian or Native Alaskan	0.2%	0.3%	0.2%
	2015 Estimated Other Races	2.7%	2.8%	2.8%
	2015 Estimated Hispanic	2.5%	2.8%	2.3%
INCOME	2015 Estimated Average Household Income	\$68,311	\$72,340	\$81,719
	2015 Estimated Median Household Income	\$54,562	\$60,422	\$66,425
	2015 Estimated Per Capita Income	\$32,643	\$33,965	\$35,918
EDUCATION (AGE 25+)	2015 Estimated Elementary (Grade Level 0 to 8)	4.0%	5.0%	5.8%
	2015 Estimated Some High School (Grade Level 9 to 11)	7.7%	7.9%	8.0%
	2015 Estimated High School Graduate	22.5%	16.6%	16.2%
	2015 Estimated Some College	18.4%	14.9%	14.7%
	2015 Estimated Associates Degree Only	9.4%	6.9%	6.1%
	2015 Estimated Bachelors Degree Only	21.1%	20.7%	20.4%
	2015 Estimated Graduate Degree	16.8%	28.0%	28.8%
BUSINESS	2015 Estimated Total Businesses	1,088	7,466	18,509
	2015 Estimated Total Employees	17,798	110,273	228,212
	2015 Estimated Employee Population per Business	16.4	14.8	12.3
	2015 Estimated Residential Population per Business	10.5	13.5	16.4

This report was produced using data from private and government sources deemed to be reliable. The information herein is provided without representation or warranty.