

FOR LEASE > RETAIL

CVS ANCHORED CENTER

2719-2731 SOUTH TELEGRAPH ROAD | DEARBORN, MICHIGAN



GREAT NEIGHBORHOOD LOCATION

> PROPERTY HIGHLIGHTS

- CVS Anchored Strip Center
- Densely Populated Area
- 3,620 & 2,420 SF Spaces Available
- Traffic Counts of 60,000

DEMOGRAPHICS	Category	1 Mile	3 Mile	5 Mile
	Population	13,642	106,848	295,276
	Average Income	\$66,199	\$61,880	\$47,095
	Households	6,076	44,284	120,346

COLLIERS INTERNATIONAL
 2 Corporate Drive | Suite 300
 Southfield, Michigan 48076

For More Information Call:

LOU FRANGO

PHONE 248 540 1000 EXT 1678

EMAIL lou.frango@colliers.com



colliers.com/detroit



FOR LEASE > RETAIL

CVS ANCHORED CENTER

2719-2731 SOUTH TELEGRAPH ROAD | DEARBORN, MICHIGAN



> SITE PLAN



LOU FRANGO

PHONE 248 540 1000 EXT 1678

EMAIL lou.franco@colliers.com



COLLIERS INTERNATIONAL

2 Corporate Dr. | Suite 300

Southfield, Michigan 48076

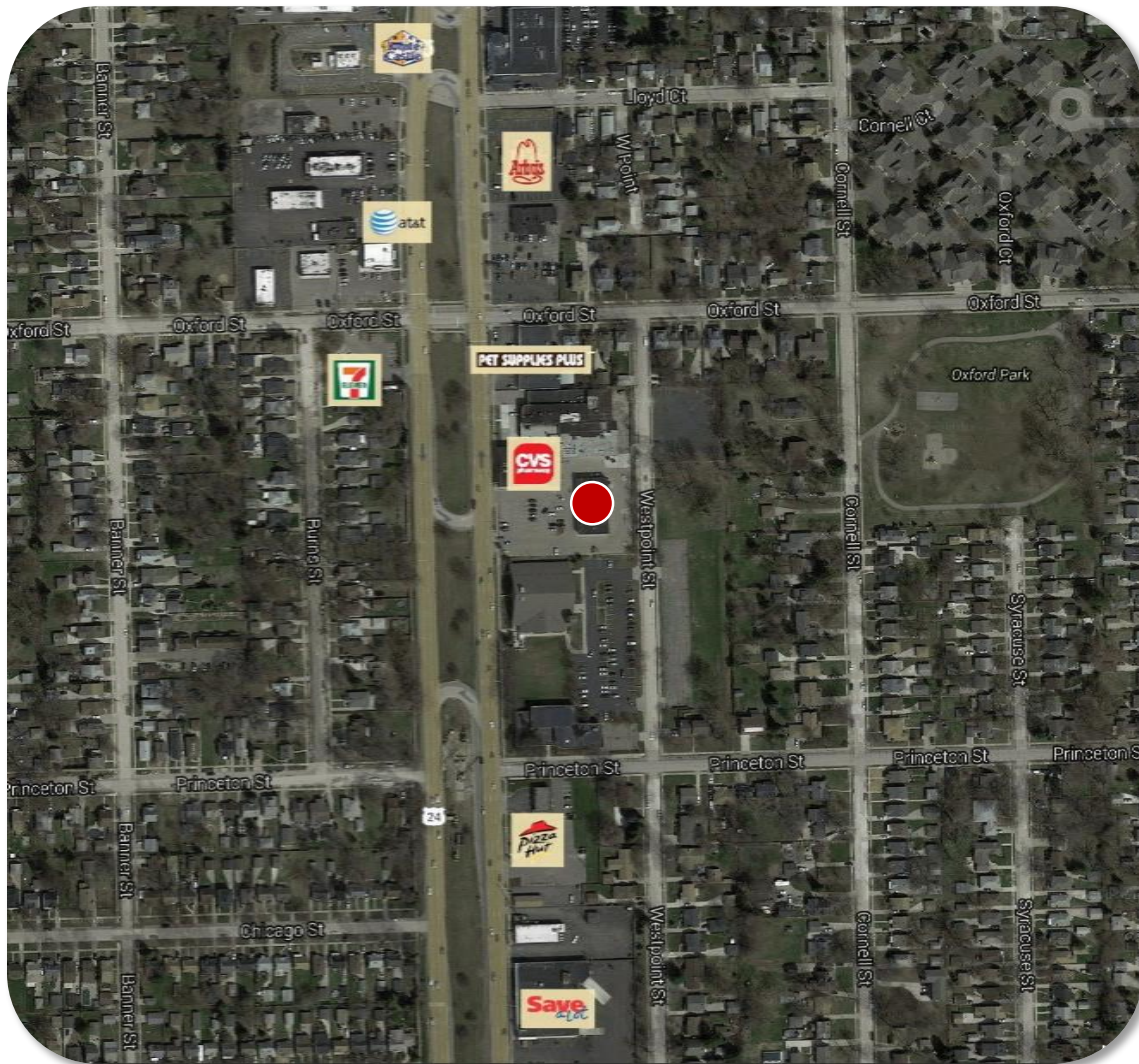
FOR LEASE > RETAIL

CVS ANCHORED CENTER

2719-2731 SOUTH TELEGRAPH ROAD | DEARBORN, MICHIGAN



> AREA MERCHANT MAP



LOU FRANGO

PHONE 248 540 1000 EXT 1678

EMAIL lou.frango@colliers.com



COLLIERS INTERNATIONAL

2 Corporate Dr. | Suite 300

Southfield, Michigan 48076

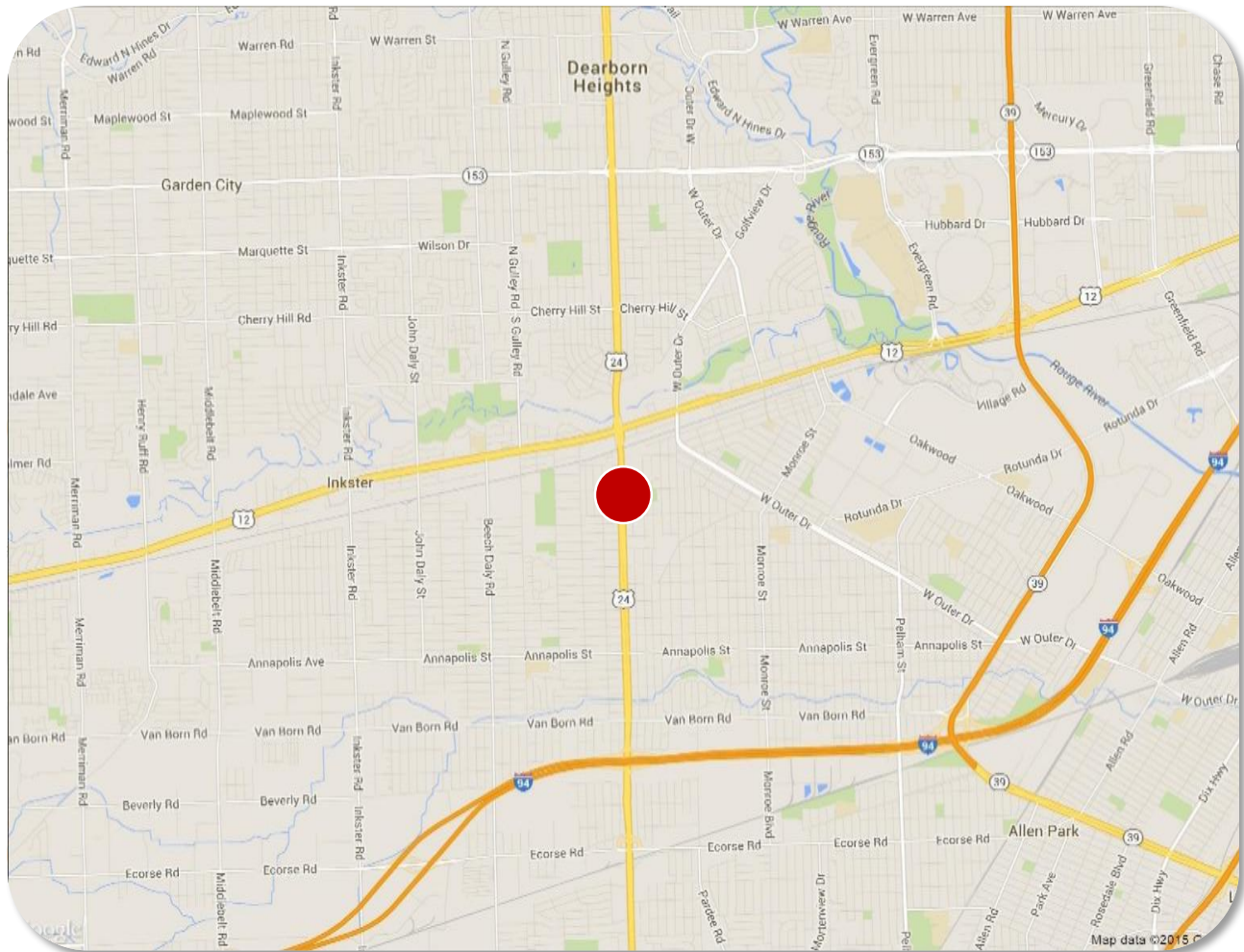
FOR LEASE > RETAIL

CVS ANCHORED CENTER

2719-2731 SOUTH TELEGRAPH ROAD | DEARBORN, MICHIGAN



> LOCATION MAP



Colliers International has prepared this document for advertising or general information only. Information contained herein has been obtained from sources deemed reliable. We have no reason to doubt its accuracy but we cannot guarantee it. All properties subject to change or withdrawal without notice.

LOU FRANGO
PHONE 248 540 1000 EXT 1678
EMAIL lou.frango@colliers.com



COLLIERS INTERNATIONAL
2 Corporate Dr. | Suite 300
Southfield, Michigan 48076

SUMMARY PROFILE

2000-2010 Census, 2015 Estimates with 2020 Projections

Calculated using Weighted Block Centroid from Block Groups

Lat/Lon: 42.2923/-83.2710

RS1

2731 S Telegraph Rd		1 mi radius	3 mi radius	5 mi radius
Dearborn, MI 48124				
POPULATION	2015 Estimated Population	13,642	106,848	295,276
	2020 Projected Population	13,398	105,398	290,718
	2010 Census Population	14,739	112,764	308,267
	2000 Census Population	15,735	119,547	326,268
	Projected Annual Growth 2015 to 2020	-0.4%	-0.3%	-0.3%
	Historical Annual Growth 2000 to 2015	-0.9%	-0.7%	-0.6%
	2015 Median Age	38.5	37.3	36.6
HOUSEHOLDS	2015 Estimated Households	6,076	44,284	120,346
	2020 Projected Households	6,065	44,334	120,181
	2010 Census Households	6,286	44,728	120,445
	2000 Census Households	6,576	47,395	128,647
	Projected Annual Growth 2015 to 2020	-	-	-
	Historical Annual Growth 2000 to 2015	-0.5%	-0.4%	-0.4%
RACE AND ETHNICITY	2015 Estimated White	87.2%	76.7%	72.8%
	2015 Estimated Black or African American	6.9%	17.3%	20.6%
	2015 Estimated Asian or Pacific Islander	2.2%	2.0%	1.9%
	2015 Estimated American Indian or Native Alaskan	0.4%	0.4%	0.4%
	2015 Estimated Other Races	3.4%	3.7%	4.3%
	2015 Estimated Hispanic	5.4%	4.9%	5.7%
INCOME	2015 Estimated Average Household Income	\$66,199	\$61,880	\$57,424
	2015 Estimated Median Household Income	\$54,898	\$51,456	\$47,095
	2015 Estimated Per Capita Income	\$29,493	\$25,687	\$23,470
EDUCATION (AGE 25+)	2015 Estimated Elementary (Grade Level 0 to 8)	3.9%	5.9%	7.6%
	2015 Estimated Some High School (Grade Level 9 to 11)	9.6%	14.5%	15.6%
	2015 Estimated High School Graduate	22.7%	24.7%	26.6%
	2015 Estimated Some College	22.3%	20.8%	21.5%
	2015 Estimated Associates Degree Only	7.8%	6.5%	6.5%
	2015 Estimated Bachelors Degree Only	14.7%	12.1%	10.4%
2015 Estimated Graduate Degree	18.9%	15.7%	12.0%	
BUSINESS	2015 Estimated Total Businesses	593	3,696	9,451
	2015 Estimated Total Employees	5,246	45,333	113,651
	2015 Estimated Employee Population per Business	8.8	12.3	12.0
	2015 Estimated Residential Population per Business	23.0	28.9	31.2

This report was produced using data from private and government sources deemed to be reliable. The information herein is provided without representation or warranty.