

FOR LEASE > RETAIL

NINE MILE PLAZA

1142-1182 E NINE MILE ROAD | HAZEL PARK, MICHIGAN



CONVENIENT NEIGHBORHOOD LOCATION

> PROPERTY HIGHLIGHTS

- 1,200 SF (20 x 60) Former Papa Romano's
1,400 SF (20 x 70) Former Nail Salon
- Close Proximity to I-696 & I-75 in Densely Populated Area
- At Signalized Intersection with Pylon Signage
- Co-Tenants: Oak Street Health & Great Clips
- Area Retailers Include: Kroger, CVS, McDonalds, Tim Horton's and Dollar Tree

> DEMOGRAPHICS

	1 MILE	3 MILE	5 MILE
POPULATION	19,490	136,872	388,032
AVG. INCOME	\$40,999	\$52,418	\$52,548
HOUSEHOLDS	8,256	59,409	162,284

COLLIERS INTERNATIONAL
2 Corporate Drive | Suite 300
Southfield, Michigan 48076

For More Information Call:

LOU FRANGO

PHONE 248 540 1000 EXT 1678

EMAIL lou.frango@colliers.com



colliers.com/detroit



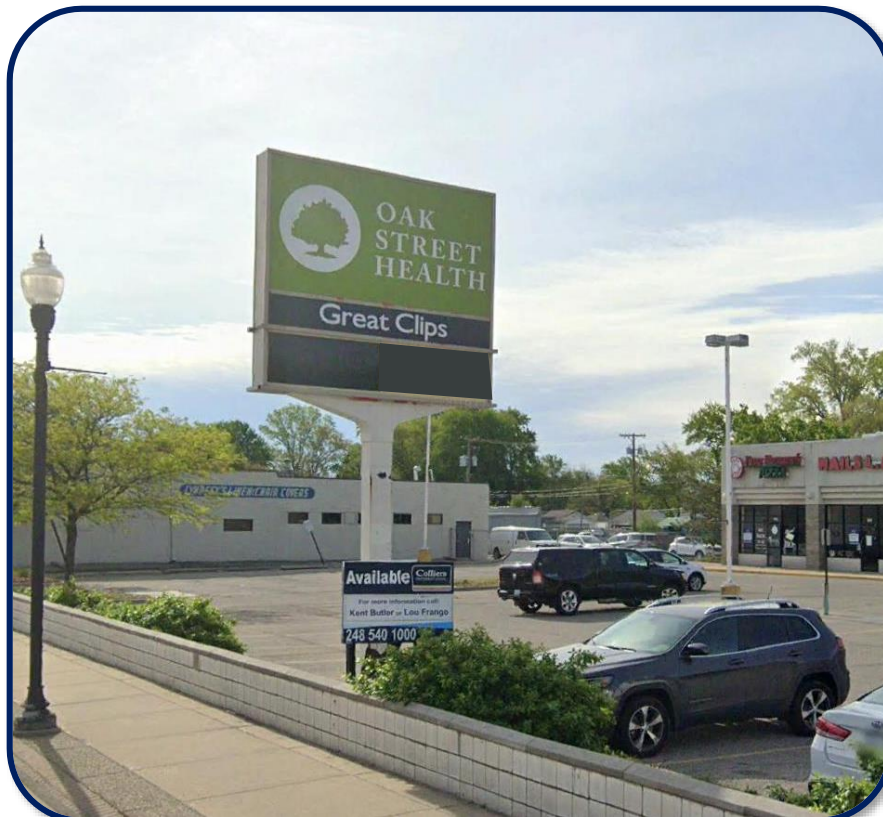
FOR LEASE > RETAIL

NINE MILE PLAZA

1142-1182 E NINE MILE ROAD | HAZEL PARK, MICHIGAN



> PROPERTY PHOTOS



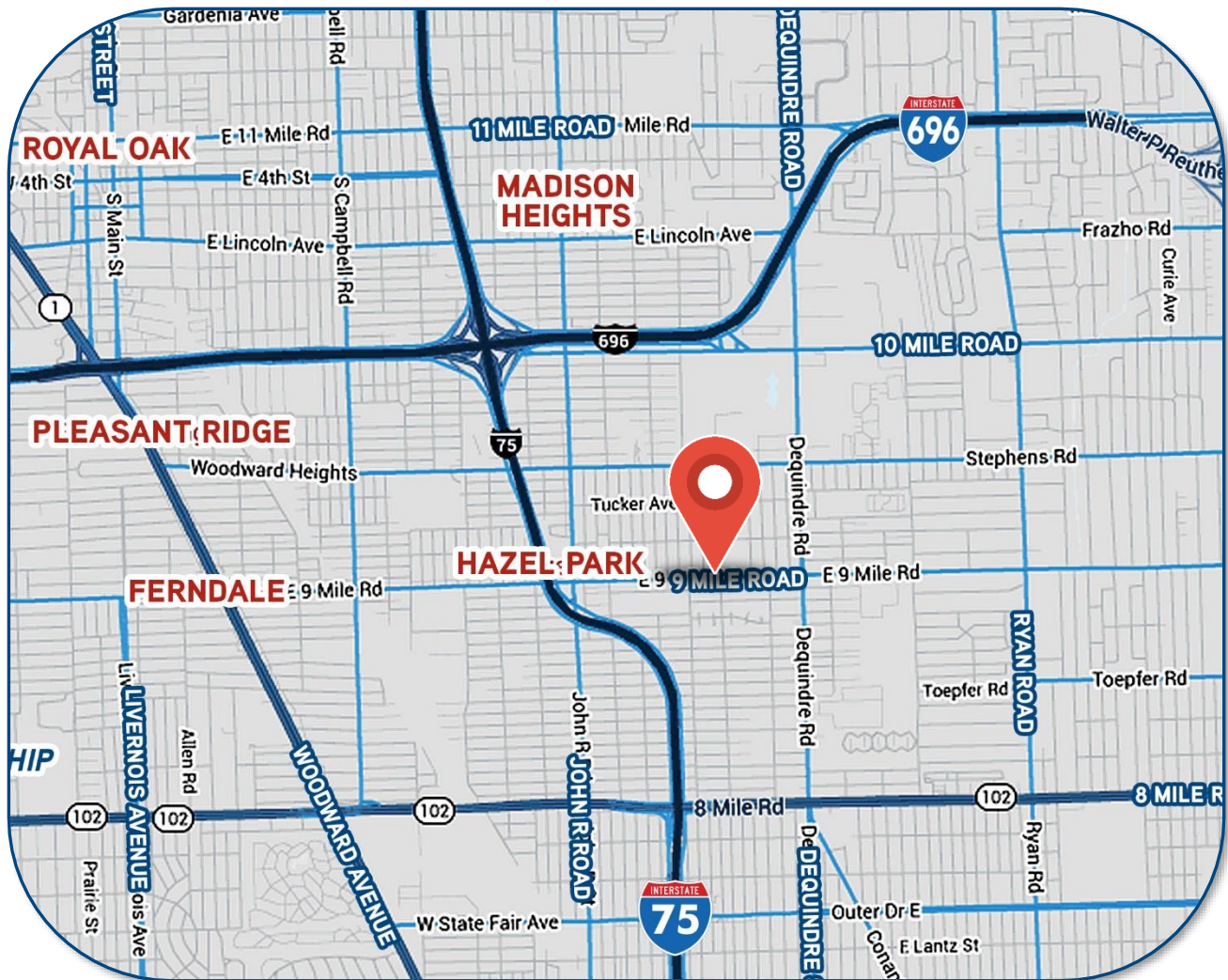
FOR LEASE > RETAIL

NINE MILE PLAZA

1142-1182 E NINE MILE ROAD | HAZEL PARK, MICHIGAN



> LOCATION MAP



LOU FRANGO
PHONE 248 540 1000 EXT 1678
EMAIL lou.frango@colliers.com



COLLIERS INTERNATIONAL
2 Corporate Dr. | Suite 300
Southfield, Michigan 48076

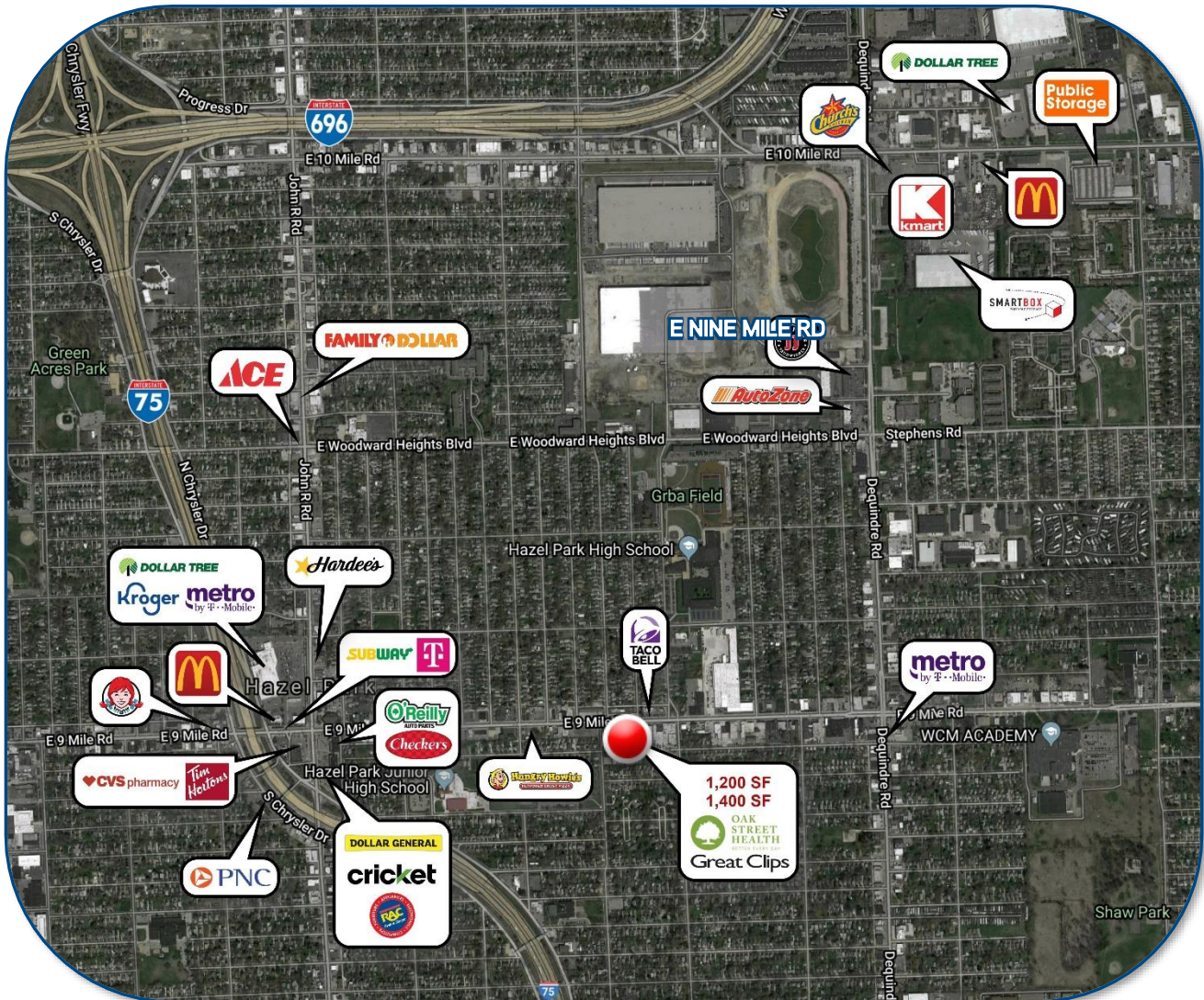
FOR LEASE > RETAIL

NINE MILE PLAZA

1142-1182 E NINE MILE ROAD | HAZEL PARK, MICHIGAN



> MERCHANT MAP



Colliers International has prepared this document for advertising or general information only. Information contained herein has been obtained from sources deemed reliable. We have no reason to doubt its accuracy but we cannot guarantee it. All properties subject to change or withdrawal without notice.

LOU FRANGO
PHONE 248 540 1000 EXT 1678
EMAIL lou.frango@colliers.com



COLLIERS INTERNATIONAL
2 Corporate Dr. | Suite 300
Southfield, Michigan 48076

SUMMARY PROFILE

2000-2010 Census, 2015 Estimates with 2020 Projections

Calculated using Weighted Block Centroid from Block Groups



Lat/Lon: 42.4616/-83.0935

RS1

1142 E 9 Mile Rd		1 mi radius	3 mi radius	5 mi radius
Hazel Park, MI 48030				
POPULATION	2015 Estimated Population	19,490	136,872	388,032
	2020 Projected Population	20,417	141,236	398,784
	2010 Census Population	18,684	133,260	378,609
	2000 Census Population	21,233	155,546	439,213
	Projected Annual Growth 2015 to 2020	1.0%	0.6%	0.6%
	Historical Annual Growth 2000 to 2015	-0.5%	-0.8%	-0.8%
	2015 Median Age	35.4	37	37.5
HOUSEHOLDS	2015 Estimated Households	8,256	59,409	162,284
	2020 Projected Households	8,770	62,250	169,258
	2010 Census Households	7,628	55,656	151,926
	2000 Census Households	8,398	61,829	170,357
	Projected Annual Growth 2015 to 2020	1.2%	1.0%	0.9%
	Historical Annual Growth 2000 to 2015	-0.1%	-0.3%	-0.3%
RACE AND ETHNICITY	2015 Estimated White	78.6%	61.1%	50.6%
	2015 Estimated Black or African American	13.5%	31.7%	41.0%
	2015 Estimated Asian or Pacific Islander	2.5%	3.4%	4.9%
	2015 Estimated American Indian or Native Alaskan	0.7%	0.4%	0.3%
	2015 Estimated Other Races	4.7%	3.4%	3.2%
	2015 Estimated Hispanic	2.9%	2.5%	2.2%
INCOME	2015 Estimated Average Household Income	\$40,999	\$52,418	\$52,548
	2015 Estimated Median Household Income	\$34,070	\$43,240	\$42,825
	2015 Estimated Per Capita Income	\$17,375	\$22,772	\$22,139
EDUCATION (AGE 25+)	2015 Estimated Elementary (Grade Level 0 to 8)	8.7%	7.2%	7.4%
	2015 Estimated Some High School (Grade Level 9 to 11)	20.1%	17.0%	17.2%
	2015 Estimated High School Graduate	32.9%	24.7%	23.6%
	2015 Estimated Some College	19.1%	19.7%	19.1%
	2015 Estimated Associates Degree Only	5.0%	5.7%	5.9%
	2015 Estimated Bachelors Degree Only	8.4%	11.9%	11.8%
	2015 Estimated Graduate Degree	5.7%	13.8%	14.9%
BUSINESS	2015 Estimated Total Businesses	636	5,023	14,075
	2015 Estimated Total Employees	4,824	47,322	153,179
	2015 Estimated Employee Population per Business	7.6	9.4	10.9
	2015 Estimated Residential Population per Business	30.6	27.3	27.6

This report was produced using data from private and government sources deemed to be reliable. The information herein is provided without representation or warranty.