

FOR LEASE > RETAIL

CVS WESTLAND CENTER

31501 JOY ROAD | WESTLAND, MICHIGAN



GREAT LOCATION

> PROPERTY HIGHLIGHTS

- 6,424 Square Feet Available
- Ample Parking
- Densely Populated Area
- CVS Anchored Strip Center

	Category	1 Mile	3 Mile	5 Mile
DEMOGRAPHICS	Population	15,604	97,877	266,347
	Average Income	\$73,396	\$64,877	\$65,316
	Households	6,503	42,607	111,464

COLLIERS INTERNATIONAL
 2 Corporate Drive | Suite 300
 Southfield, Michigan 48076

For More Information Call:

LOU FRANGO

PHONE 248 540 1000 EXT 1678

EMAIL lou.frango@colliers.com



colliers.com/detroit



FOR LEASE > RETAIL

CVS WESTLAND CENTER

31501 JOY ROAD | WESTLAND, MICHIGAN



> PROPERTY PHOTOS



Colliers International has prepared this document for advertising or general information only. Information contained herein has been obtained from sources deemed reliable. We have no reason to doubt its accuracy but we cannot guarantee it. All properties subject to change or withdrawal without notice.

LOU FRANGO
PHONE 248 540 1000 EXT 1678
EMAIL lou.frango@colliers.com



COLLIERS INTERNATIONAL
2 Corporate Dr. | Suite 300
Southfield, Michigan 48076

FOR LEASE > RETAIL

CVS WESTLAND CENTER

31501 JOY ROAD | WESTLAND, MICHIGAN



> SITE PLAN



Colliers International has prepared this document for advertising or general information only. Information contained herein has been obtained from sources deemed reliable. We have no reason to doubt its accuracy but we cannot guarantee it. All properties subject to change or withdrawal without notice.

LOU FRANGO
PHONE 248 540 1000 EXT 1678
EMAIL lou.frango@colliers.com



COLLIERS INTERNATIONAL
2 Corporate Dr. | Suite 300
Southfield, Michigan 48076

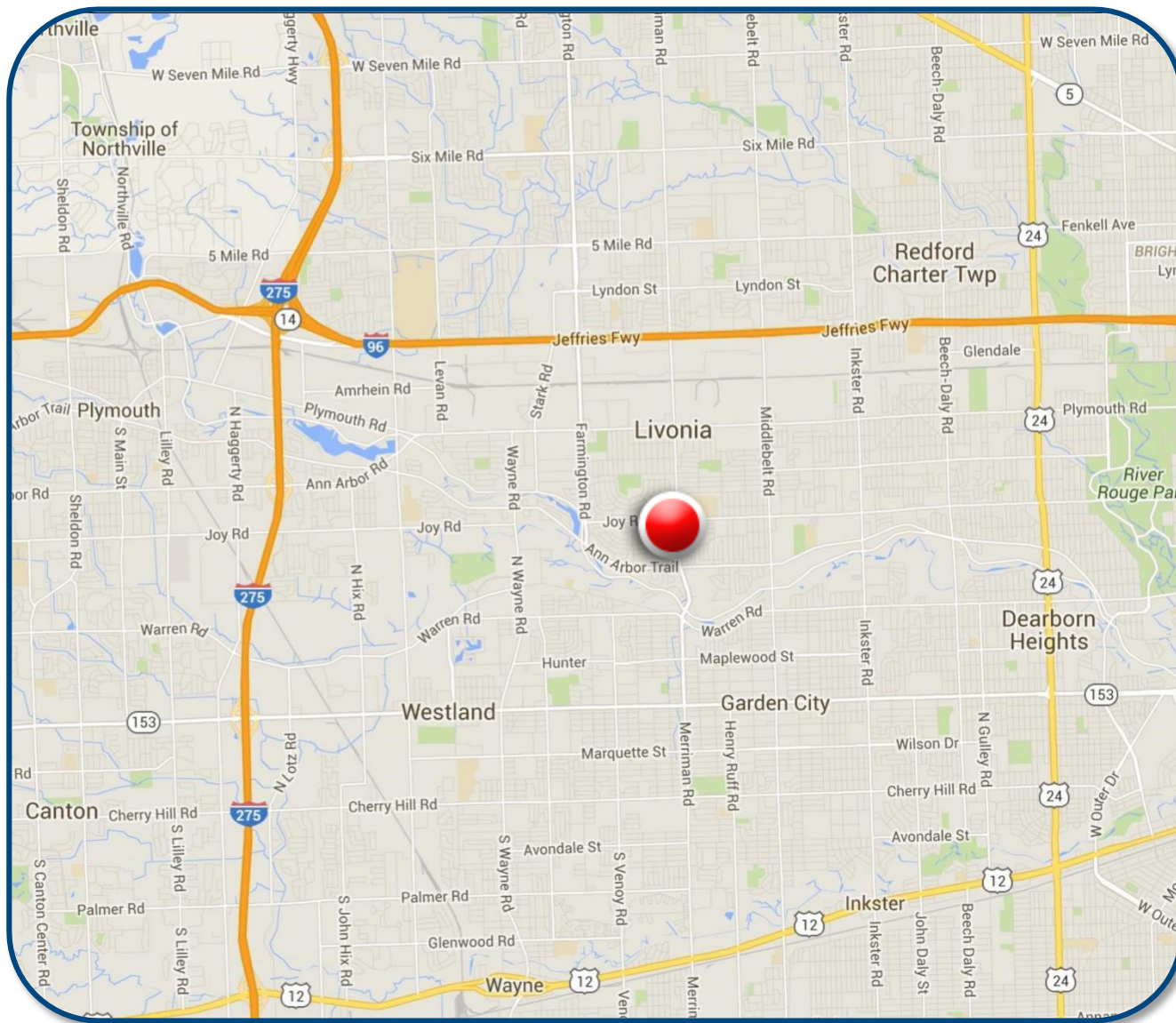
FOR LEASE > RETAIL

CVS WESTLAND CENTER

31501 JOY ROAD | WESTLAND, MICHIGAN



> LOCATION MAP



Colliers International has prepared this document for advertising or general information only. Information contained herein has been obtained from sources deemed reliable. We have no reason to doubt its accuracy but we cannot guarantee it. All properties subject to change or withdrawal without notice.

LOU FRANGO
PHONE 248 540 1000 EXT 1678
EMAIL lou.frango@colliers.com



COLLIERS INTERNATIONAL
2 Corporate Dr. | Suite 300
Southfield, Michigan 48076

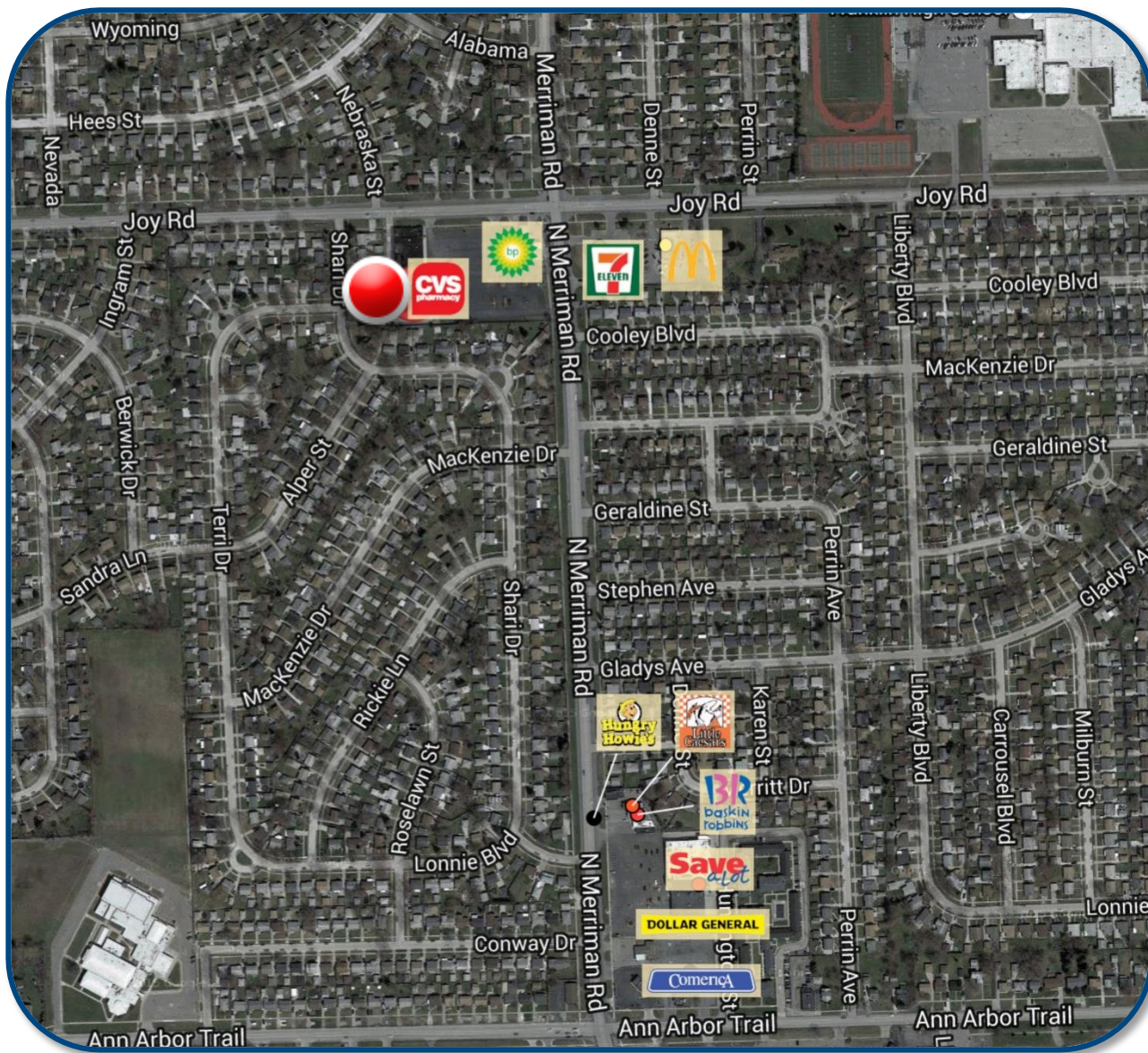
FOR LEASE > RETAIL

CVS WESTLAND CENTER

31501 JOY ROAD | WESTLAND, MICHIGAN



> AREA MERCHANT MAP



Colliers International has prepared this document for advertising or general information only. Information contained herein has been obtained from sources deemed reliable. We have no reason to doubt its accuracy but we cannot guarantee it. All properties subject to change or withdrawal without notice.

LOU FRANGO
PHONE 248 540 1000 EXT 1678
EMAIL lou.frango@colliers.com



COLLIERS INTERNATIONAL
2 Corporate Dr. | Suite 300
Southfield, Michigan 48076

SUMMARY PROFILE

2000-2010 Census, 2016 Estimates with 2021 Projections
 Calculated using Weighted Block Centroid from Block Groups



Lat/Lon: 42.3535/-83.3535

RS1

31501 Joy Rd

Westland, MI 48185

1 mi radius 3 mi radius 5 mi radius

	1 mi radius	3 mi radius	5 mi radius	
POPULATION	2016 Estimated Population	15,604	97,877	266,347
	2021 Projected Population	14,894	93,717	256,315
	2010 Census Population	17,059	105,817	286,240
	2000 Census Population	18,042	111,337	299,560
	Projected Annual Growth 2016 to 2021	-0.9%	-0.9%	-0.8%
	Historical Annual Growth 2000 to 2016	-0.8%	-0.8%	-0.7%
	2016 Median Age	38.2	39	38.9
HOUSEHOLDS	2016 Estimated Households	6,503	42,607	111,464
	2021 Projected Households	6,339	41,613	109,431
	2010 Census Households	6,905	44,629	116,091
	2000 Census Households	7,148	45,989	119,975
	Projected Annual Growth 2016 to 2021	-0.5%	-0.5%	-0.4%
	Historical Annual Growth 2000 to 2016	-0.6%	-0.5%	-0.4%
RACE AND ETHNICITY	2016 Estimated White	88.6%	82.8%	76.3%
	2016 Estimated Black or African American	7.1%	11.6%	17.4%
	2016 Estimated Asian or Pacific Islander	2.0%	2.3%	2.8%
	2016 Estimated American Indian or Native Alaskan	0.2%	0.3%	0.3%
	2016 Estimated Other Races	2.2%	3.0%	3.2%
	2016 Estimated Hispanic	3.2%	3.8%	3.7%
INCOME	2016 Estimated Average Household Income	\$73,396	\$64,877	\$65,316
	2016 Estimated Median Household Income	\$65,590	\$55,440	\$55,475
	2016 Estimated Per Capita Income	\$30,605	\$28,289	\$27,405
EDUCATION (AGE 25+)	2016 Estimated Elementary (Grade Level 0 to 8)	2.4%	2.5%	3.0%
	2016 Estimated Some High School (Grade Level 9 to 11)	5.0%	6.4%	6.7%
	2016 Estimated High School Graduate	29.4%	31.8%	30.7%
	2016 Estimated Some College	25.4%	26.8%	25.9%
	2016 Estimated Associates Degree Only	10.3%	9.8%	9.1%
	2016 Estimated Bachelors Degree Only	19.4%	15.2%	16.0%
2016 Estimated Graduate Degree	8.0%	7.5%	8.6%	
BUSINESS	2016 Estimated Total Businesses	297	4,345	10,570
	2016 Estimated Total Employees	2,642	53,084	120,725
	2016 Estimated Employee Population per Business	8.9	12.2	11.4
	2016 Estimated Residential Population per Business	52.6	22.5	25.2

This report was produced using data from private and government sources deemed to be reliable. The information herein is provided without representation or warranty.