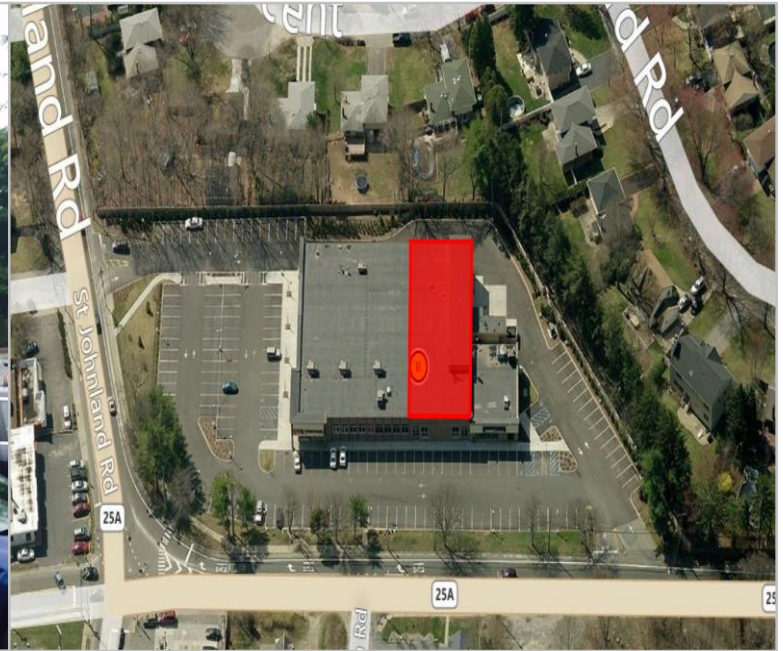


## **FOR LEASE**

### **750 Route 25A, Kings Park, NY 11754**



**Type:** Retail – All Uses Considered  
**Unit Size:** ±7,500 SF  
**Rent:** \$20.00 PSF  
**Co-Tenants:** CVS Pharmacy, Capital One Bank  
**Neighboring-Tenants:** Bank of America

±7,500 SF located at the intersection of Route 25a & St. Johnland Road. Recently developed building. Ample onsite parking. Strong local demographics. All uses considered. Call for details.

#### **For More Information Contact:**

**Christopher Wierzbicki**  
(516) 997-0100 ext. 312 – Office  
(516) 987-8355 – Mobile  
christopher@pliskinrealty.com

**Jeffrey Pliskin**  
(516) 997-0100 – Office  
jpliskin@pliskinrealty.com