

For Sale

Land Parcel

63rd St & S. Pulaski Rd

Chicago, IL 60629



- Adjacent to CVS Pharmacy
- Cross parking site with great visibility on a strong major VPD arterial Pulaski Rd - (43k VPD)
- Located in close proximity to Midway International Airport and in close proximity to several full service restaurants, QSR's, and hotels

DEMOGRAPHICS	.25 MI.	.5 MI.	1 MI.
AVERAGE HHI	\$52,144	\$52,844	\$55,208
DAYTIME POP.	1,652	5,967	23,076
RESIDENTIAL POP.	3,299	13,204	51,952
TRAFFIC COUNTS			
S. PULASKI RD	42,600 VPD		
63 RD STREET	15,800 VPD		

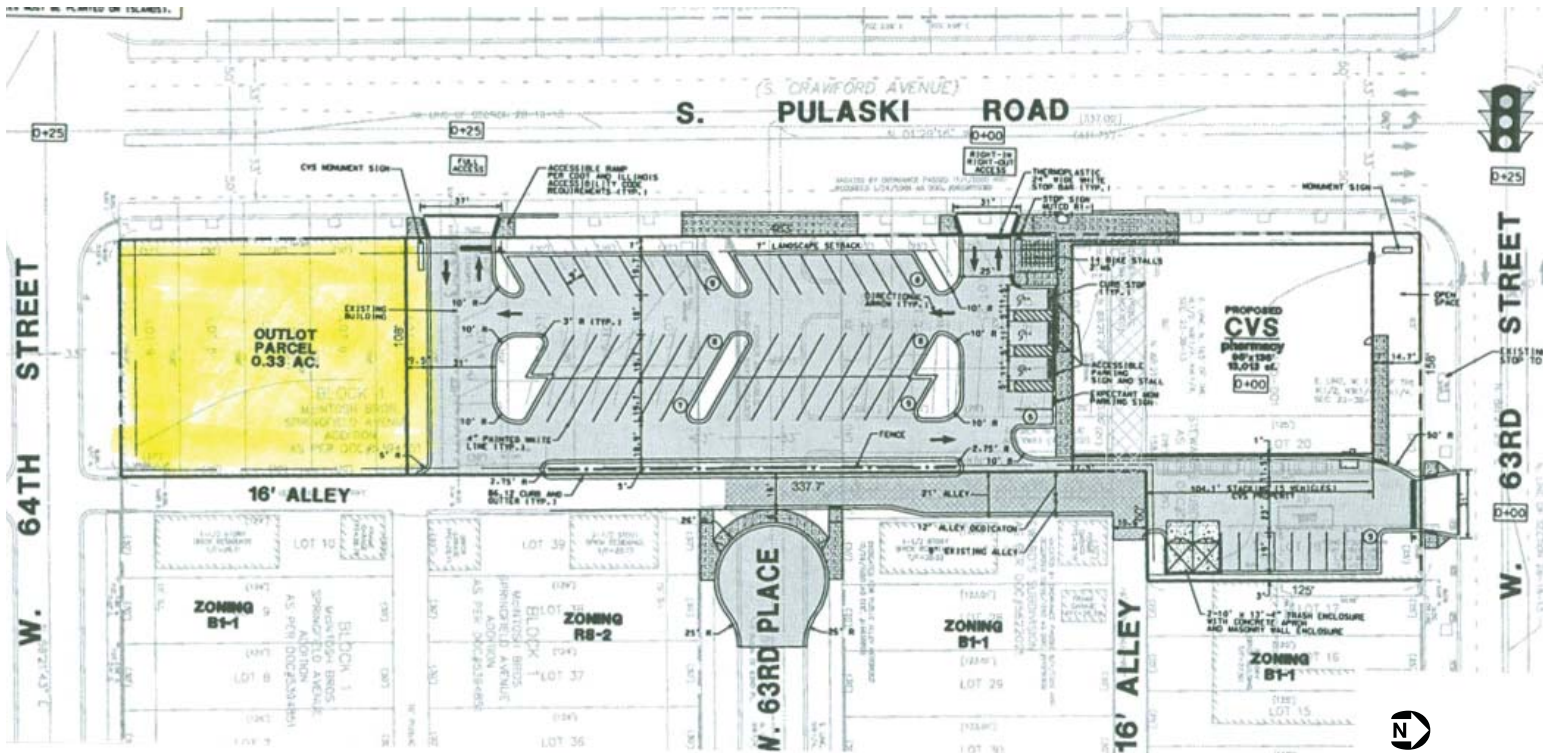
Ken Robberechts
312.275.3103
ken@baumrealty.com

Doug Renner
312.275.3137
doug.renner@baumrealty.com



For Sale
Land Parcel

63rd St & S. Pulaski Rd
Chicago, IL 60629



Ken Robberechts
312.275.3103
ken@baumrealty.com

Doug Renner
312.275.3137
doug.renner@baumrealty.com



