



## Retail For Sale

Asking Price:

**\$350,000**

## Contact Us

**Scott Corbin**

Executive Managing Director

+1 407 362 6164

scott.corbin@colliers.com

255 S. Orange Avenue  
Suite 1300

Orlando, FL 32801  
colliers.com

**Colliers**

# 1.38-Acre Parcel For Sale

900 E. Main Street, Lake Butler, FL

## Property Highlights

- 1.38± acres available for sale
- Zoning: CG commercial general
- Located at the intersection of the markets main thoroughfares (SR-100/SR-121/E. Main Street)
- Multiple points of ingress/egress, cross access with CVS
- Located near the main residential population
- Traffic Counts:  
6,200 AADT on E. Main Street (SR-100)  
6,600 AADT on SE 6th Street (SR-121)

## Area Demographics



### Population

3-Mile: 3,692  
5-Mile: 7,795  
10-Mile: 20,283



### Daytime Population

3-Mile: 4,185  
5-Mile: 6,934  
10-Mile: 14,528



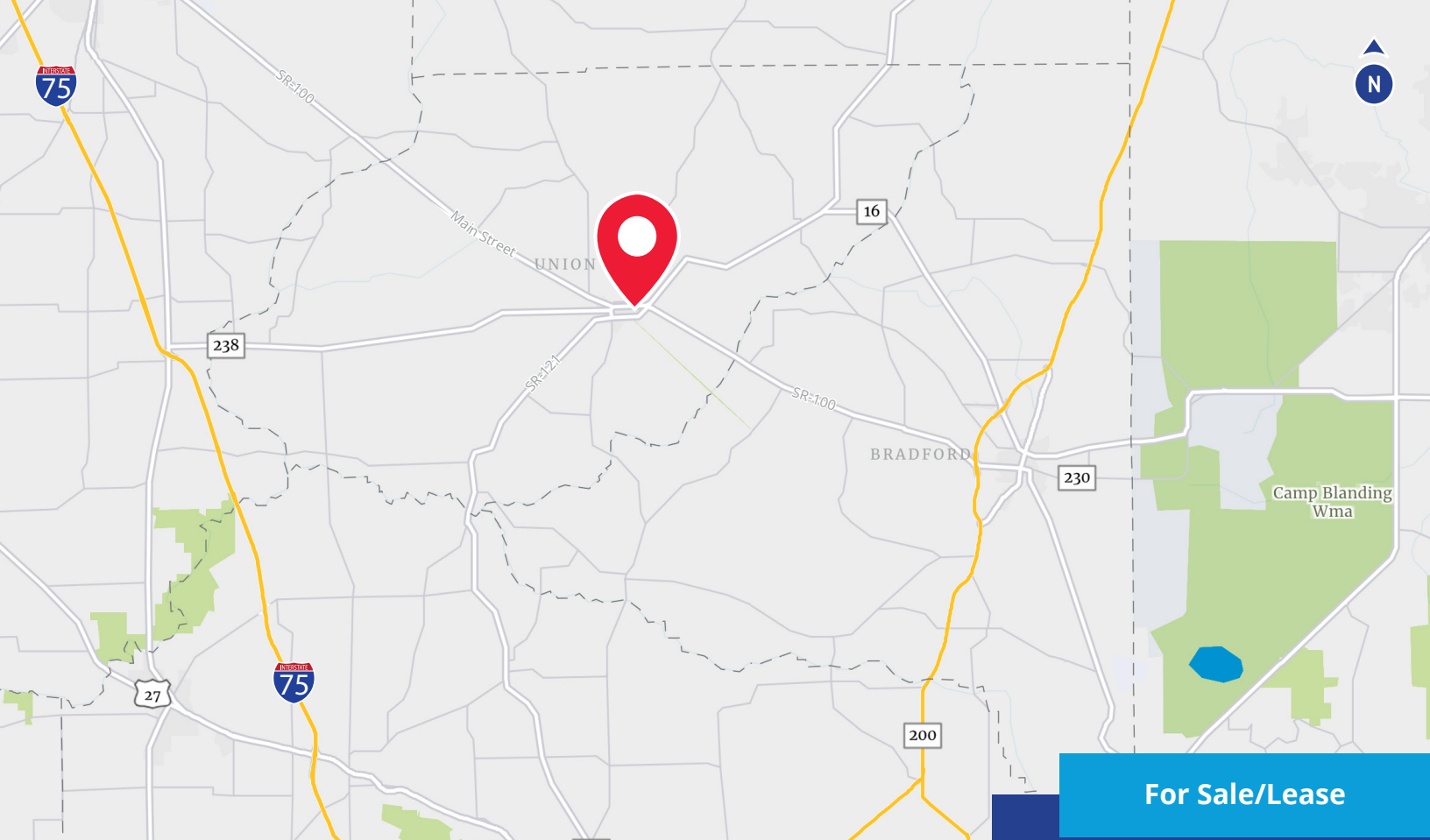
### Average HH Income

3-Mile: \$62,312  
5-Mile: \$61,142  
10-Mile: \$61,758



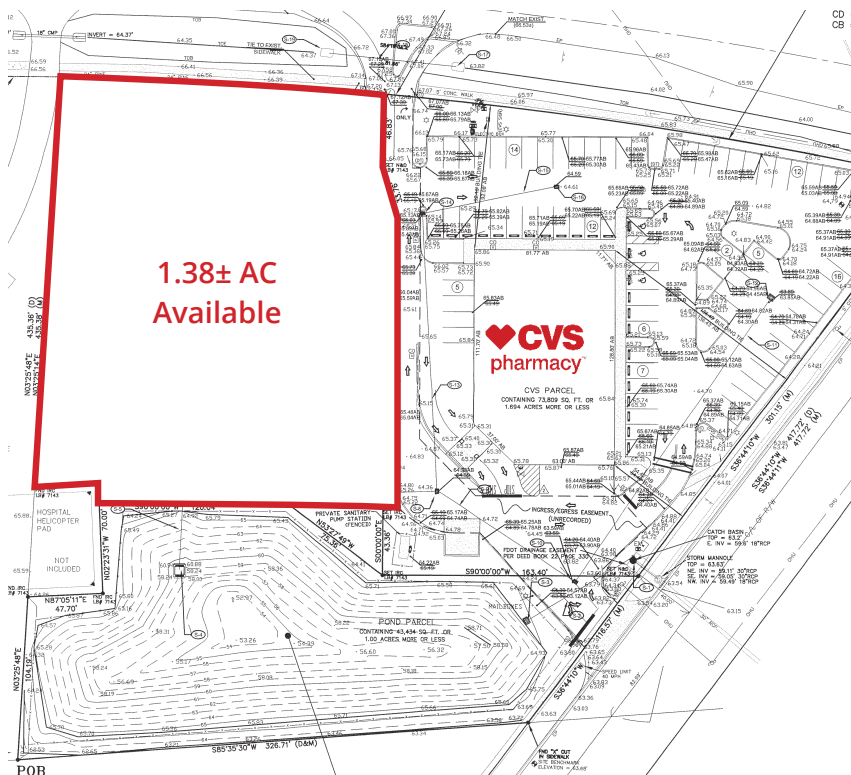
### Households

3-Mile: 1,270  
5-Mile: 1,877  
10-Mile: 4,667



**For Sale/Lease**

## Site Plan



## Contact Us

**Scott Corbin**

Executive Managing Director

+1 407 362 6164

scott.corbin@colliers.com

255 S. Orange Avenue  
Suite 1300

Orlando, FL 32801

colliers.com

**Colliers**

This document has been prepared by Colliers International for advertising and general information only. Colliers International makes no guarantees, representations or warranties of any kind, expressed or implied, regarding the information including, but not limited to, warranties of content, accuracy and reliability. Any interested party should undertake their own inquiries as to the accuracy of the information. Colliers International excludes unequivocally all inferred or implied terms, conditions and warranties arising out of this document and excludes all liability for loss and damages arising there from. This publication is the copyrighted property of Colliers International and/or its licensor(s). ©2021. All rights reserved.

Accelerating success.