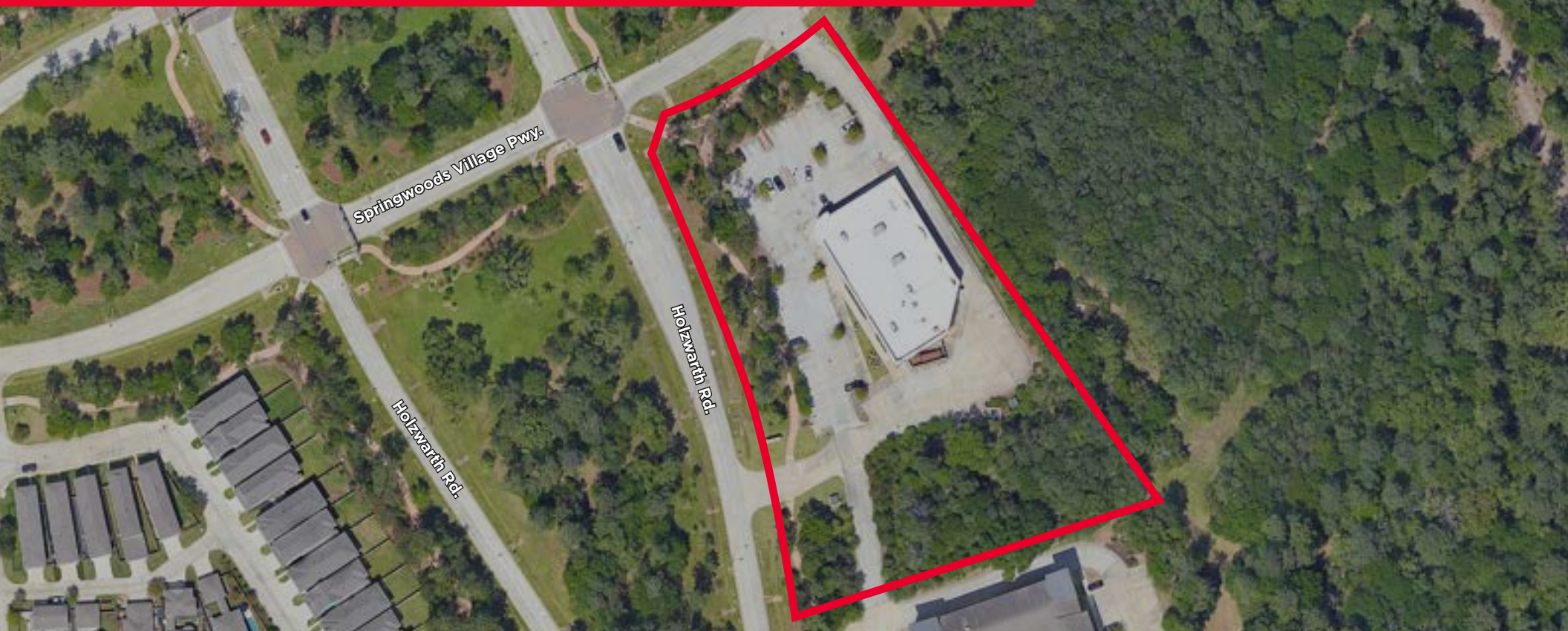


FORMER CVS AT 22614 HOLZWARTH RD. SPRING, TX 77389

±3.49 ACRES WITH ±15,807 SF BUILDING



KRISTEN MCDADE

Managing Director

+1 713 331 1796

kristen.mcdade@cushwake.com

MATTHEW DAVIS

Senior Director

+1 713 331 1798

matthew.davis@cushwake.com



EXXON MOBIL HOUSTON CAMPUS
SPRINGWOODS VILLAGE

NORTHGATE CROSSING
ELEMENTARY

SPRINGWOODS VILLAGE
MIDDLE SCHOOL



Springwoods Village Pkwy.

Spring Pine Forest Dr.

E Mossy Oaks Rd.

Energy Dr.

E Mossy Oaks Rd.

Holzworth Rd.





?? ?? ?? ??

????????????????????



?? ?? ?? ??

????????????????
??????????????



?? ?? ??

????????????????
??????????????



?? ?? ?? ?? ??

????????????????
??????????????



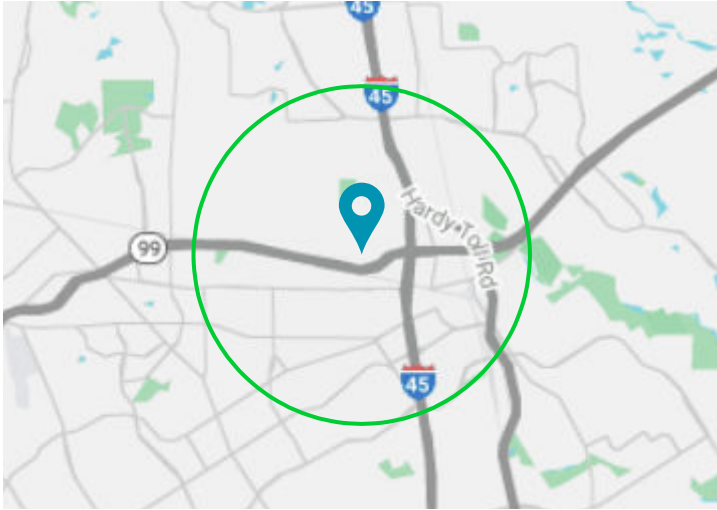
?? ??

????????????????



?? ?? ?? ?? ??

????????????????
????????



?? ?? ?? ?? ?? ?? ?? ?? ?? ??

?? ?? ?? ?? ??



?? ?? ?? ??

????????????????



?? ??

????????????????



?? ??

????????????????



?? ?? ?? ??

????????????????
??????????????



?? ?? ??

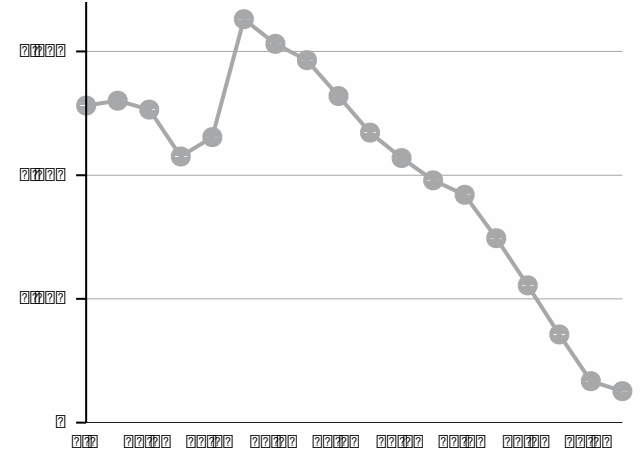
????????????
????????????



?? ?? ?? ??

????????????
????????????

?? ?? ?? ?? ?? ?? ?? ?? ?? ??



?? ?? ?? ?? ?? ?? ?? ?? ?? ?? ?? ?? ?? ?? ?? ??

?? ??

?? ?? ?? ?? ?? ??
?? ?? ??

?? ??

?? ?? ?? ?? ?? ?? ?? ??
?? ?? ?? ?? ??

?? ?? ??

?? ?? ??
?? ?? ?? ?? ??

?? ?? ??

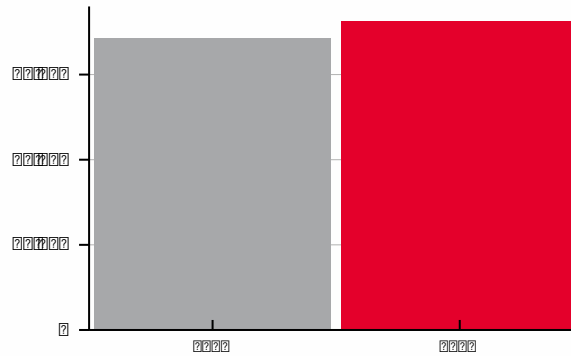
?? ?? ?? ?? ?? ??
?? ?? ??

?? ?? ??

?? ?? ?? ?? ?? ??
?? ?? ??

?? ?? ??

?? ?? ?? ?? ?? ?? ?? ?? ??
?? ?? ?? ?? ?? ??



????

?? ??

?? ??
????????????????

?? ?? ??

????????????????????????????

?? ?? ???????????????

?? ?? ?????????



CONTACT BROKERS FOR PRICING

HOLZWARTH RD JUST SOUTH OF SPRINGWOODS VILLAGE PKWY

- Former CVS building (±15,807 SF) on ±3.49 acres on the East side of Holzwarth Rd. and just south of Springwoods Pkwy., which is a signalized intersection in Spring, TX
- Property benefits from pedestrian connectivity by way of a WA
- Site is located in the path of growth within a block of Springwoods Village/ Exxon Mobil Houston Campus along a stretch of Holzwarth Rd immediately adjacent to CVS and Residence Inn, Courtyard by Marriott and Exxon Mobil

KRISTEN MCDADE

Managing Director

+1 713 331 1796

kristen.mcdade@cushwake.com

MATTHEW DAVIS

Senior Director

+1 713 331 1798

matthew.davis@cushwake.com

