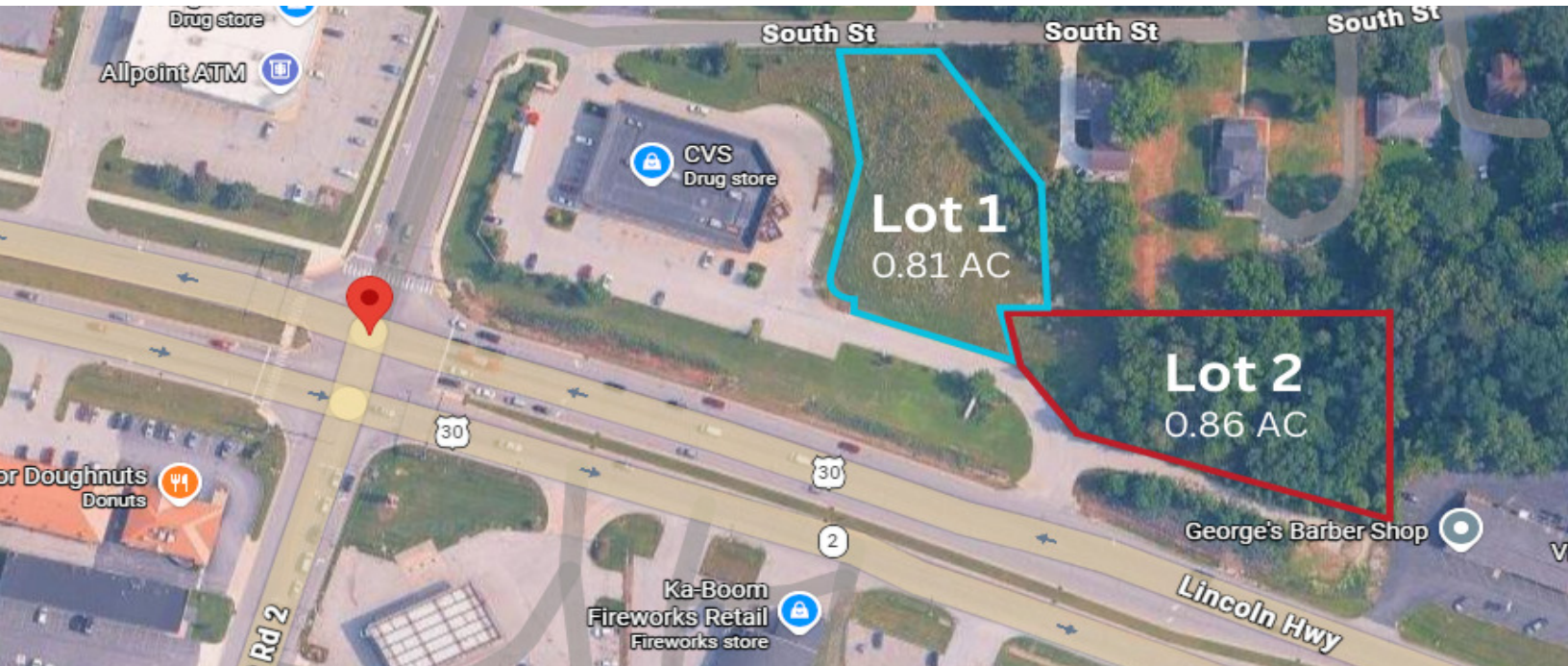


# CVS OUTLOT VALPARAISO

US Highway 30 & Washington St., Valparaiso, IN 46383

**FOR SALE**



## PROPERTY HIGHLIGHTS

- 0.81 AC outlot available for sale
- Adjacent 0.86 AC outlot available
- Direct access from US 30
- Easy ingress & egress
- Adjacent to busy CVS
- Located at the busiest intersection in the city
- Strong demographics

## OFFERING SUMMARY

Sale Price:	Contact Broker
Lot Size:	0.81 Acres

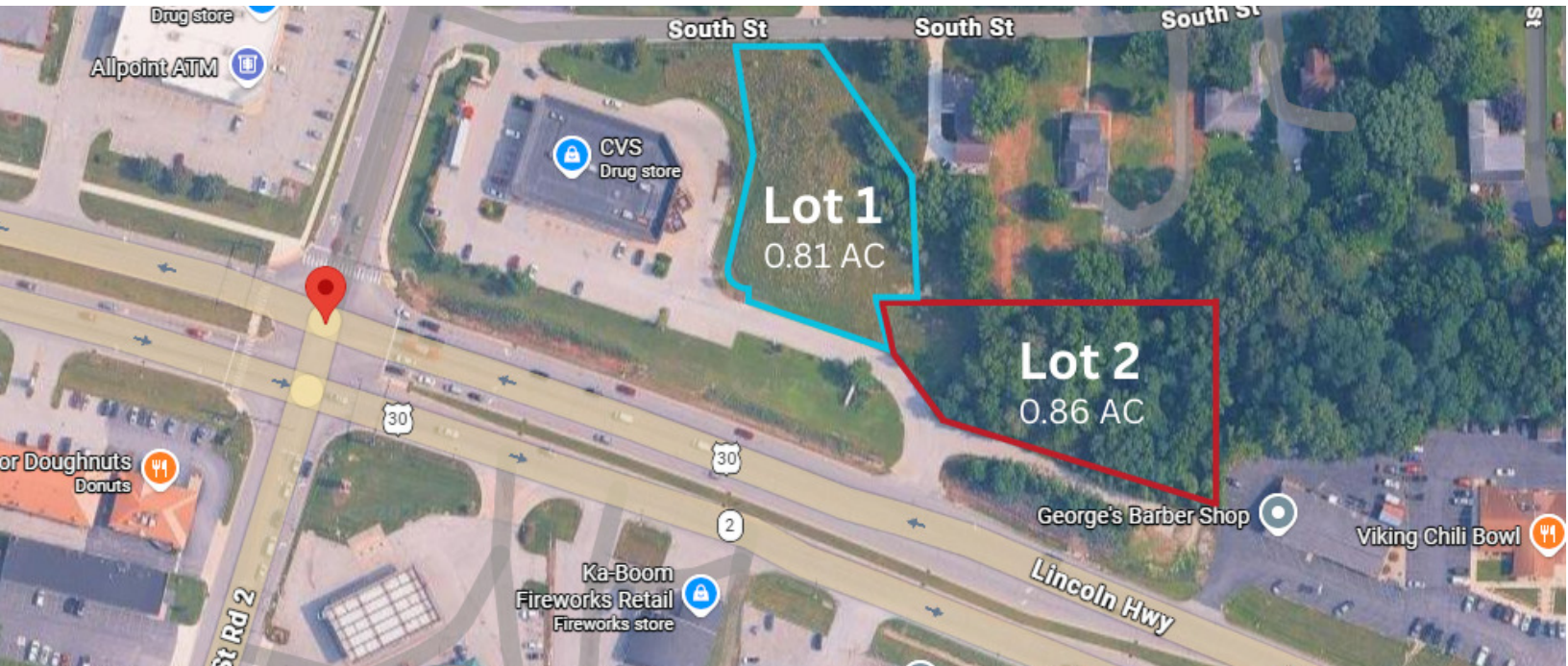
**SAM GARVIN**

O: 317.454.7171 | C: 317.696.7270  
sgarvin@premiercres.com

# CVS OUTLOT VALPARAISO

**FOR SALE**

US Highway 30 & Washington St., Valparaiso, IN 46383



## PROPERTY DESCRIPTION

Prime for retail or commercial development, this 0.81 AC property offers unparalleled opportunity in the thriving city of Valparaiso. The location provides seamless connectivity for businesses & customers. Less than a mile from Valparaiso University & the vibrant Downtown District, this property benefits from high visibility & traffic flow. This site is strategically positioned to attract & engage customers, making it an ideal investment for retail or commercial expansion in the Valparaiso area. Adjacent 0.86 AC outlot available.

## LOCATION DESCRIPTION

Located in the thriving city of Valparaiso, IN, this area is bustling with activity & ripe with opportunities for retail & commercial development. Situated near notable landmarks such as Valparaiso University, the vibrant Downtown Valparaiso district, & many popular dining & entertainment establishments, the location offers prime exposure for any potential retail or commercial venture. With its strategic positioning along US Highway 30 & Washington St./SR 2, this area is a key investment opportunity for

**SAM GARVIN**

O: 317.454.7171 | C: 317.696.7270  
sgarvin@premiercres.com